



SOUL ESTATES

SALES & LETTINGS

TO LET - 3 BEDROOM HOUSE

Bedford Street, Tipton, DY4 7NX

£1,300 PCM

Soul Estates are proud to present this well-presented 3-bedroom mid-terraced detached house To Let. This perfect family home is situated in a very popular area of Tipton. Situated near Dudley Port Train Station with good schools, local amenities and transport links and close to Great Bridge Asda and Burnt Tree Island Tesco.

The property offers an entrance hall with rooms going off to the family kitchen, a spacious lounge, a downstairs WC and a storage cupboard. Kitchen with a range of wall and base units to match, cooker splashback, with an electric Hob and Oven

Stairs leading to the first-floor landing, which leads off to two good-sized bedrooms and a family bathroom.

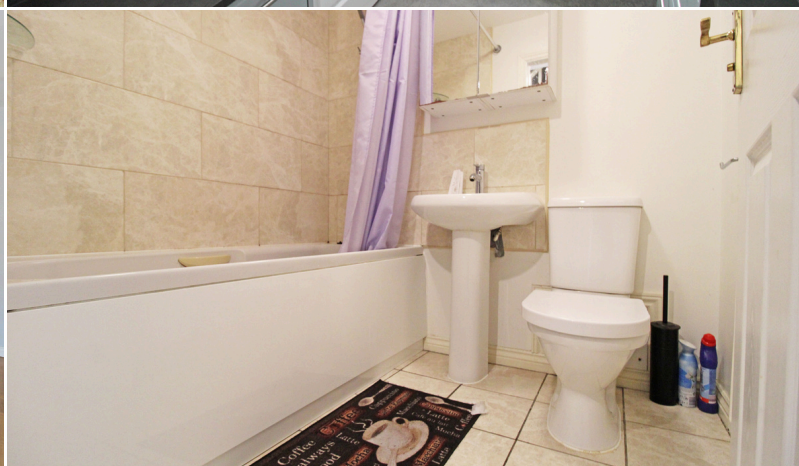
Stairs leading to the second-floor landing, which leads off to the master bedroom with an en-suite and dressing area. The property also benefits from gas central heating and double glazing, low maintenance front and rear garden with off-road parking.

✓ **3 BEDROOM MID-TERRACED HOUSE**

✓ **SPACIOUS THOUGH LOUNGE**

✓ **MASTER BEDROOM WITH ENSUITE**

✓ **GARAGE & DRIVEWAY**









SOUL ESTATES

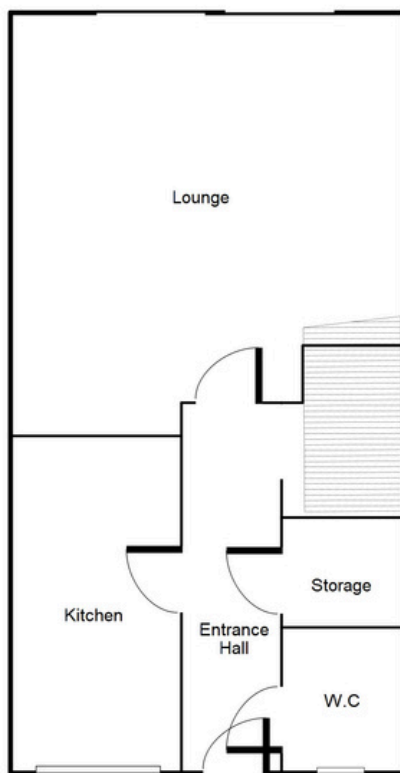
SALES & LETTINGS

TO LET - 3 BEDROOM HOUSE

Bedford Street, Tipton, DY4 7NX

£1,300 PCM

Ground Floor



This floorplan is just an example, this is not to scale.
Please see description for exact room sizes.
(c) Soul Estates

Entrance Hallway:

14' 4" x 3' 6" (4.37m x 1.07m)

WC:

5' 8" x 2' 10" (1.73m x 0.86m)

Kitchen:

11' 9" x 5' 11" (3.58m x 1.80m)

Lounge:

17' 8" x 12' 10" (5.38m x 3.91m)



SOUL ESTATES
SALES & LETTINGS

CONTACT US

Soul Estates
20 Great Bridge
Tipton
DY4 7HA

0121 647 6779

www.soulestates.co.uk

WWW.SOULESTATES.CO.UK | 0121 647 6779



SOUL ESTATES

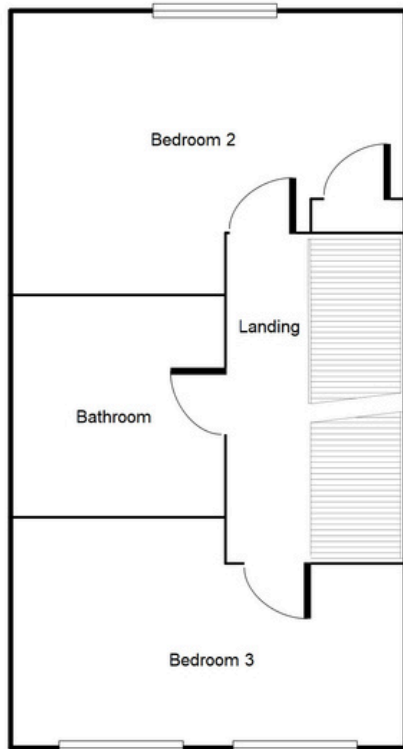
SALES & LETTINGS

TO LET - 3 BEDROOM HOUSE

Bedford Street, Tipton, DY4 7NX

£1,300 PCM

First Floor



This floorplan is just an example, this is not to scale.
Please see description for exact room sizes.
(c) Soul Estates

Landing:

11' 4" x 6' 7" (3.45m x 2.01m)

Bedroom 2:

11' 9" x 12' 10" (3.58m x 3.91m)

Bedroom 3:

11' 1" x 12' 10" (3.38m x 3.91m)

Bathroom:

6' 4" x 5' 6" (1.93m x 1.68m)



SOUL ESTATES
SALES & LETTINGS

CONTACT US

Soul Estates
20 Great Bridge
Tipton
DY4 7HA

0121 647 6779

www.soulestates.co.uk

WWW.SOULESTATES.CO.UK | 0121 647 6779



SOUL ESTATES

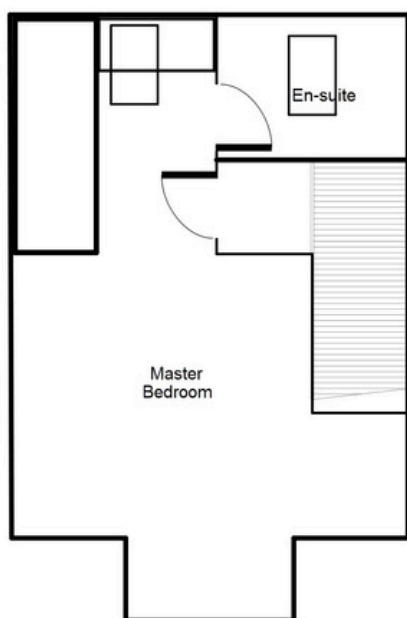
SALES & LETTINGS

TO LET - 3 BEDROOM HOUSE

Bedford Street, Tipton, DY4 7NX

£1,300 PCM

Second Floor



Master Bedroom:
19' 3" x 12' 10" (5.86m x 3.91m)

Master Ensuite:
5' 8" x 5' 6" (1.73m x 1.68m)

This floorplan is just an example, this is not to scale.
Please see description for exact room sizes.
(c) Soul Estates



SOUL ESTATES
SALES & LETTINGS

CONTACT US

Soul Estates
20 Great Bridge
Tipton
DY4 7HA

0121 647 6779

www.soulestates.co.uk

WWW.SOULESTATES.CO.UK | 0121 647 6779