



SOUL ESTATES

SALES & LETTINGS

TO LET - 3 BEDROOM HOUSE

Davis Avenue, Tipton, DY4 8JY

£1,150 PCM

Soul Estates are proud to present this well presented 3 bedroom semi-detached house To Let. This perfect family home is situated in a very popular area of Tipton. Situated near Dudley Port Train Station with good schools, local amenities and transport links and close to Burnt Tree island Tesco.

The property offers an entrance porchway leading into the hallway with rooms going off to the spacious though lounge and kitchen. Kitchen with a range of wall and base units to match, splashback tiling, with a free standing cooker.

Stairs leading to the first-floor landing, which leads off to three bedrooms and a family bathroom. The property also benefits from gas central heating and double glazing, a low maintenance front and rear garden with off-road parking

✓ **3 BEDROOM SEMI-DETACHED HOUSE**

✓ **FAMILY BATHROOM**

✓ **SPACIOUS THOUGH LOUNGE**

✓ **NEAR DUDLEY PORT TRAIN STATION**



WWW.SOULESTATES.CO.UK | 0121 647 6779







SOUL ESTATES

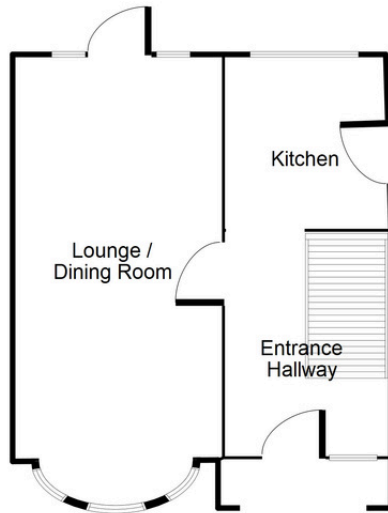
SALES & LETTINGS

TO LET - 3 BEDROOM HOUSE

Davis Avenue, Tipton, DY4 8JY

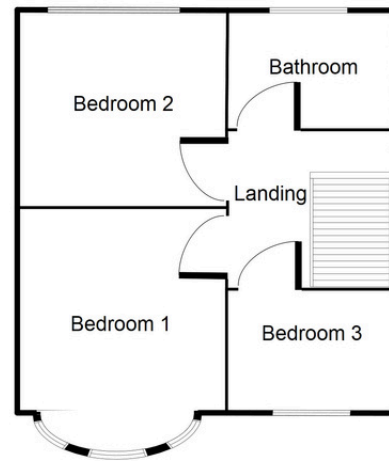
£1,150 PCM

Ground Floor



This floorplan is just an example, is not to scale.
Please see description for exact room sizes.
(c) Soul Estates

First Floor



This floorplan is just an example, is not to scale.
Please see description for exact room sizes.
(c) Soul Estates

Entrance Hallway:

9' 1" x 5' 5" (2.77m x 1.65m)

Lounge:

21' 8" x 10' 0" (6.60m x 3.05m)

Kitchen:

10' 1" x 5' 5" (3.07m x 1.65m)

Landing:

6' 11" x 5' 7" (2.11m x 1.70m)

Bedroom 1:

12' 5" x 10' 0" (3.78m x 3.05m)

Bedroom 2:

10' 10" x 10' 0" (3.30m x 3.05m)

Bedroom 3:

6' 5" x 5' 5" (1.95m x 1.65m)

Bathroom:

7' 6" x 5' 5" (2.28m x 1.65m)



SOUL ESTATES

SALES & LETTINGS

CONTACT US

Soul Estates
20 Great Bridge
Tipton
DY4 7HA

0121 647 6779

www.soulestates.co.uk

WWW.SOULESTATES.CO.UK | 0121 647 6779