

MASON STREET

— *West Bromwich* —

The image shows the front of a two-story red brick terraced house. The ground floor features a white-framed arched window on the left and a white front door with a semi-circular transom window on the right. The door has the number '22' on it. Above the door is a small black awning. The upper floor has a white-framed rectangular window. The house is set on a paved sidewalk.

MASON STREET
West Bromwich

For Sale

Mason Street,
West Bromwich,
B70 9NN

3 Bedroom
Mid-Terraced
House

The finer details

Description



IDEAL FIRST-TIME OR
INVESTMENT OPPORTUNITY



A BEAUTIFULLY PRESENTED
MID TERRACE FAMILY HOME



NEWLY REFURBISH TO A HIGH
STANDARD



THREE GOOD SIZED
BEDROOMS



TWO RECEPTION ROOMS



FITTED KITCHEN



FAMILY BATHROOM &
OUTSIDE WC



HIGHLY DEMANDED
LOCATION



GOOD SCHOOLS & LOCAL
AMENITIES

Soul Estates are proud to present this well-presented 3-bedroom mid-terraced house For Sale. This perfect family home is situated in the heart of West Bromwich, with good schools situated close by. The house is close to Hanbury Primary School, George Salter Academy and West Bromwich High Street and the town centre and has good transport links with Guns Village and Dartmouth Street Tram stops just 0.2 miles away. This home is perfect for first-time buyers, families, or investors.

The property offers an entrance leading into the spacious front reception room followed by under stairs storage and second reception room, a fitted kitchen, and a family bathroom to the rear. Fitted family kitchen with a range of wall and base units to match, splashback tiling, and gas hob with electric oven.

Stairs leading to the first-floor landing which leads off to, two double bedrooms and a large single bedroom to the rear. The property has been refurbished to a high standard which benefits from solid oak wooden doors new carpets, a new boiler, gas central heating, double glazing and a split-level rear garden with an outside WC.



Reception Room One



Reception Room Two



Kitchen



Bathroom



Outside W.C.



Bedroom One



Bedroom Two



Bedroom Three

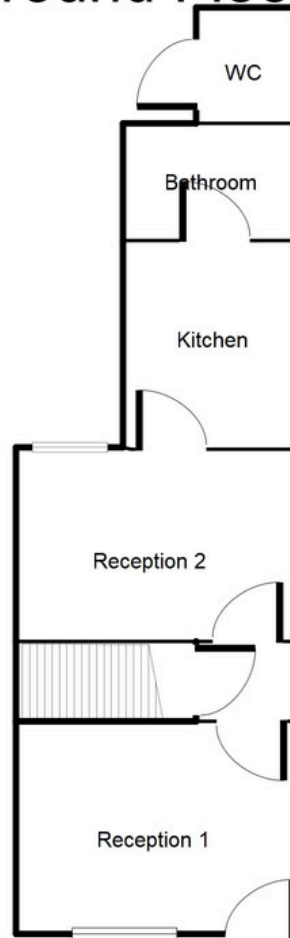


Garden



GROUND FLOOR FLOORPLAN

Ground Floor



This floorplan is just an example, this is not to scale.
Please see description for exact room sizes.
(c) Soul Estates

RECEPTION ROOM ONE:
10' 10" X 12' 5" (3.30M X 3.78M)

RECEPTION ROOM TWO:
12' 3" X 12' 5" (3.73M X 3.78M)

KITCHEN:
11' 1" X 7' 2" (3.38M X 2.18M)

BATHROOM:
6' 7" X 6' 10" (2.01M X 2.08M)

OUTSIDE WC:
4' 2" X 3' 6" (1.27M X 1.07M)

FIRST FLOOR FLOORPLAN

LANDING:

15' 6" X 2' 7" (4.72M X 0.79M)

BEDROOM ONE:

10' 11" X 14' 2" (3.32M X 4.31M)

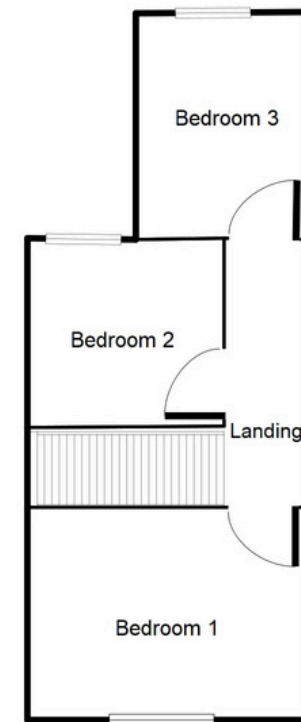
BEDROOM TWO:

12' 6" X 11' 2" (3.81M X 3.40M)

BEDROOM THREE:

11' 3" X 7' 4" (3.43M X 2.23M)

First Floor



This floorplan is just an example, this is not to scale.
Please see description for exact room sizes.
(c) Soul Estates

MASON STREET

West Bromwich

CONTACT US

Soul Estates
20 Great Bridge
Tipton
DY4 7HA

0121 647 6779

www.soulestates.co.uk

