

ld

LEVESON DRIVE

TIPTON

ld

LEVESON DRIVE

TIPTON

For Sale

Leveson Drive,  
Tipton, DY4 9TD

2 Bedroom  
End Terraced  
House



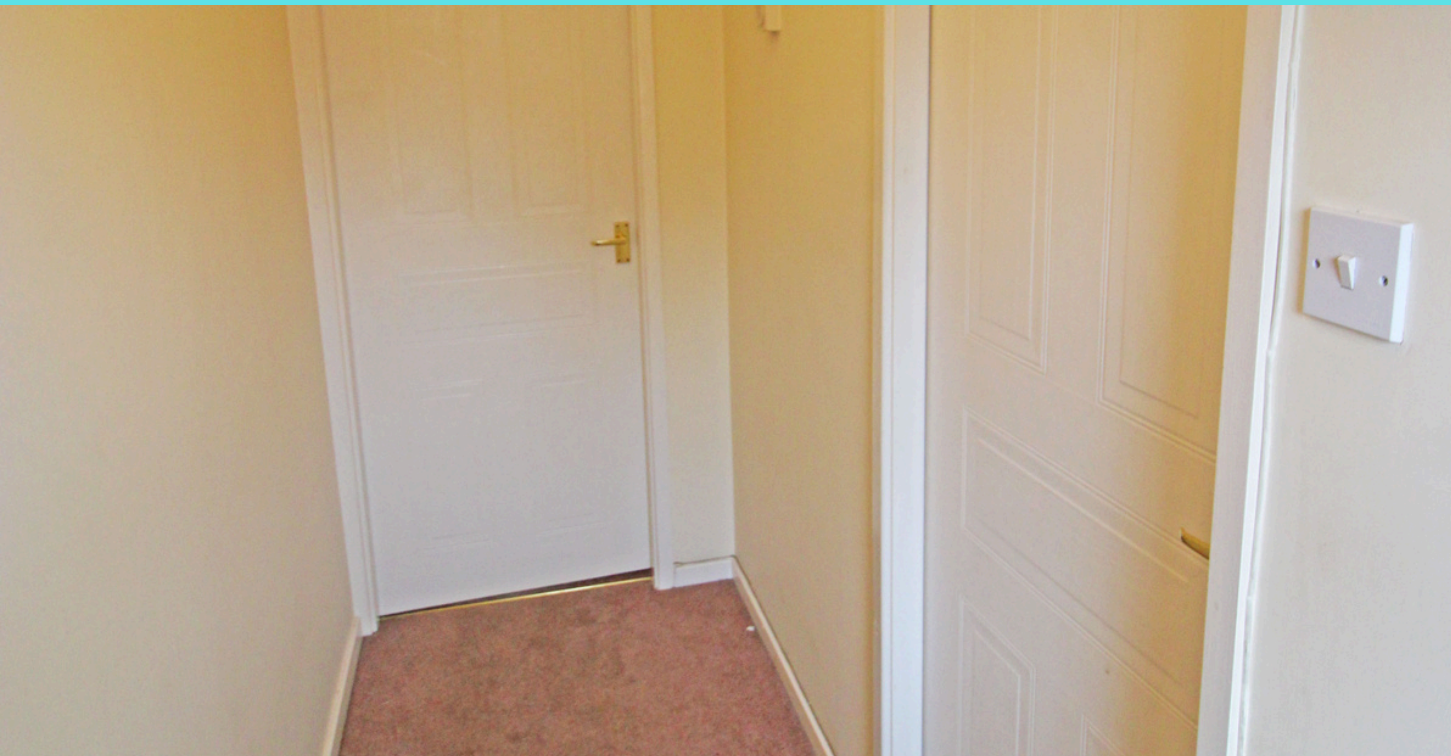


# Description

Soul Estates are proud to present this well-presented 2-bedroom End Terraced house For Sale. This perfect family home is situated in a very popular area of Tipton, with good schools close by. The house is close to Mad o Rourke's Pie Factory, Dudley Port train station and other local amenities.

The property offers an entrance hallway with rooms going off to the kitchen to the front of the property and a spacious lounge to the rear of the property with sliding patio doors to the rear garden. Fitted family kitchen with a range of wall and base units to match, splashback tiling.

Stairs leading to the first-floor landing which leads off to, two double bedrooms and a family bathroom. The property also benefits from gas central heating and double glazing, a large rear garden and a low-maintenance front garden with ample off-road parking.



## The finer details



IDEAL FIRST-TIME OR  
INVESTMENT OPPORTUNITY



A BEAUTIFULLY PRESENTED  
END TERRACE FAMILY HOME



TWO BEDROOMS



LOUNGE



FITTED KITCHEN



FAMILY BATHROOM



DRIVEWAY WITH OFF-ROAD  
PARKING



OFF-FRONT & REAR  
GARDEN OAD PARKING





















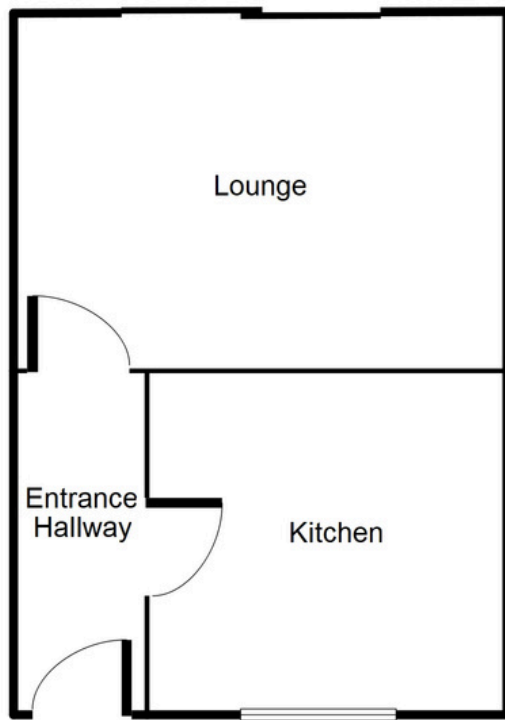






## GROUND FLOOR FLOORPLAN

### Ground Floor



This floorplan is just an example, this is not to scale.  
Please see description for exact room sizes.  
(c) Soul Estates

#### ENTRANCE HALLWAY

9' 2" X 3' 4" (2.79M X 1.02M)

#### KITCHEN

9' 3" X 7' 11" (2.82M X 2.41M)

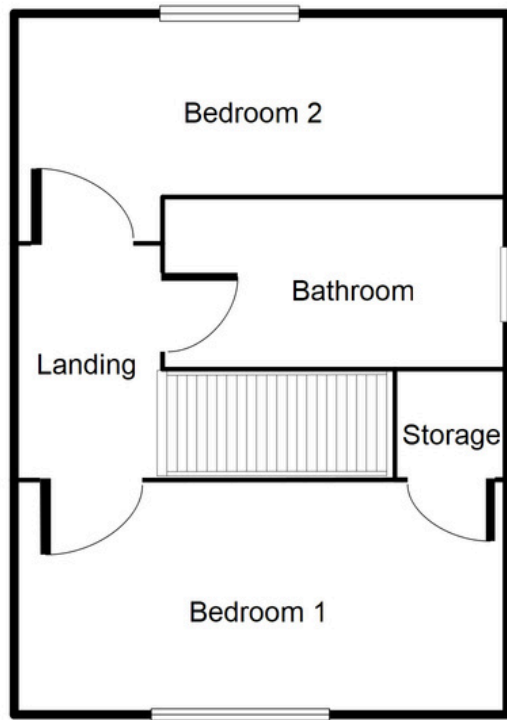
#### LOUNGE

16' 7" X 11' 7" (5.05M X 3.53M)



## FIRST FLOOR FLOORPLAN

### First Floor



This floorplan is just an example, this is not to scale.  
Please see description for exact room sizes.  
(c) Soul Estates

### LANDING

6' 6" X 2' 8" (1.98M X 0.81M)

### BEDROOM ONE

9' 3" X 11' 8" (2.82M X 3.55M)

### BEDROOM TWO

7' 6" X 11' 8" (2.28M X 3.55M)

### BATHROOM:

4' 11" X 8' 7" (1.50M X 2.61M)



ld

LEVESON DRIVE

TIPTON

## CONTACT US

Soul Estates  
20 Great Bridge  
Tipton  
DY4 7HA

0121 647 6779

[www.soulestates.co.uk](http://www.soulestates.co.uk)



SOUL ESTATES  
SALES & LETTINGS