



SOUL ESTATES
SALES & LETTINGS

TO LET - COMMERCIAL SPACE

Moseley Street, Digbeth, B12 0RT

£1,000 PCM



- ✓ FIRST FLOOR RETAIL/OFFICE SPACE APPROX.: 1400 SQ FT
- ✓ A SHORT DISTANCE FROM BIRMINGHAM CITY CENTRE
- ✓ CENTRAL TO MANY RESIDENCIES LOCAL BUSINESSES, COMMUNITY CENTRES AND EDUCATIONAL FACILITIES
- ✓ AVAILABLE IMMEDIATELY
- ✓ FLEXIBLE TERMS AVAILABLE
- ✓ TENURE: LEASEHOLD

WWW.SOULESTATES.CO.UK | 0121 647 6779



SOUL ESTATES
SALES & LETTINGS

TO LET - COMMERCIAL SPACE

Moseley Street, Digbeth, B12 0RT

£1,000 PCM





SOUL ESTATES

SALES & LETTINGS

SOUL ESTATES IS PLEASED TO PRESENT THIS FIRST-FLOOR PREMISES LOCATED IN THE HEART OF DIGBETH, BIRMINGHAM. THE PROPERTY IS WITHIN A SHORT WALKING DISTANCE OF BIRMINGHAM CITY CENTRE, BIRMINGHAM WHOLESALE MARKETS, AND ESSENTIAL LOCAL AMENITIES MAKING IT HIGHLY ACCESSIBLE AND CONVENIENT.

THE PROPERTY HAS ITS ONE ACCESS TO THE FIRST-FLOOR COMMERCIAL SPACE IDEAL FOR A LARGE VERSATILE OFFICE SPACE, OR A MULTITUDE OF OTHER INNOVATIVE VENTURES.

DESCRIPTION

TENURE: LEASEHOLD THE PROPERTY COMPRISES A SELF-CONTAINED FIRST-FLOOR RETAIL/OFFICE SPACE UNIT PROVIDING A RETAIL SALES AREA WHICH INCLUDES A KITCHENETTE AND SEPARATE WC.

ACCOMMODATION

TOTAL AREA APPROX. FIRST FLOOR - 1400 SQ FT.

TERMS

PROSPECTIVE TENANTS ARE RESPONSIBLE FOR BUSINESS RATES AND ARE ADVISED TO CONFIRM THEIR RATES LIABILITY WITH THE LOCAL RATING AUTHORITY.

BUSINESS RATES

PROSPECTIVE TENANTS ARE RESPONSIBLE FOR BUSINESS RATES AND ARE ADVISED TO CONFIRM THEIR RATES LIABILITY WITH THE LOCAL RATING AUTHORITY.

LEGAL COSTS

EACH PARTY IS TO BE RESPONSIBLE FOR THEIR LEGAL COSTS INCURRED DURING THIS TRANSACTION.



SOUL ESTATES

SALES & LETTINGS

SERVICES

WE UNDERSTAND THAT ALL MAIN SERVICES ARE AVAILABLE TO THE PROPERTY. PROSPECTIVE TENANTS SHOULD MAKE THEIR ENQUIRIES AS TO THE SUITABILITY AND ADEQUACY OF THE SUPPLIES FOR THEIR PURPOSES.

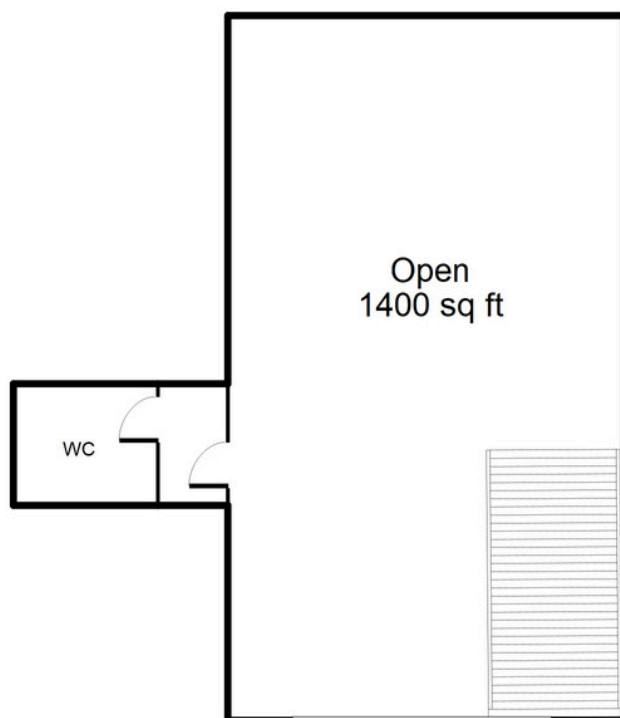
AVAILABILITY

THE PROPERTY IS IMMEDIATELY AVAILABLE FOLLOWING COMPLETION OF LEGAL FORMALITIES.

VIEWINGS

STRICTLY VIA PRIOR APPOINTMENT THROUGH THE SOLE SELLING AGENT SOUL ESTATES ON 0121 647 6779

First Floor



This floorplan is just an example, this is not to scale.
Please see description for exact room sizes.
(c) Soul Estates