



SOUL ESTATES

SALES & LETTINGS

TO LET - FIRST FLOOR OFFICE SPACE

Great Bridge High Street, Tipton

£600 PCM

Soul Estates are pleased to present this commercial first-floor office space premises located in the main Great Bridge High Street, Tipton area. The property is located on the Great Bridge High Street with the surrounding area comprising a mix of local and national retailers supported by a large residential within walking distance to other trades and amenities. The property comprises a large first-floor office space with a separate W.C. The immediate area is well served by public transport with regular bus routes, Dudley Port Train Station and Black Lake Tram Stop only a short distance away.

The property comprises a self-contained first floor retail space with a W.C. Previously used for textile and tailoring services, this floor space has the potential to be used for a range of different services.

✓ **AVAILABLE IMMEDIATELY**

✓ **FIRST FLOOR UNIT APPROX.: 410 SQ FT**

✓ **NEW LEASE, FLEXIBLE TERMS**

✓ **GREAT BRIDGE, TIPON**





SOUL ESTATES

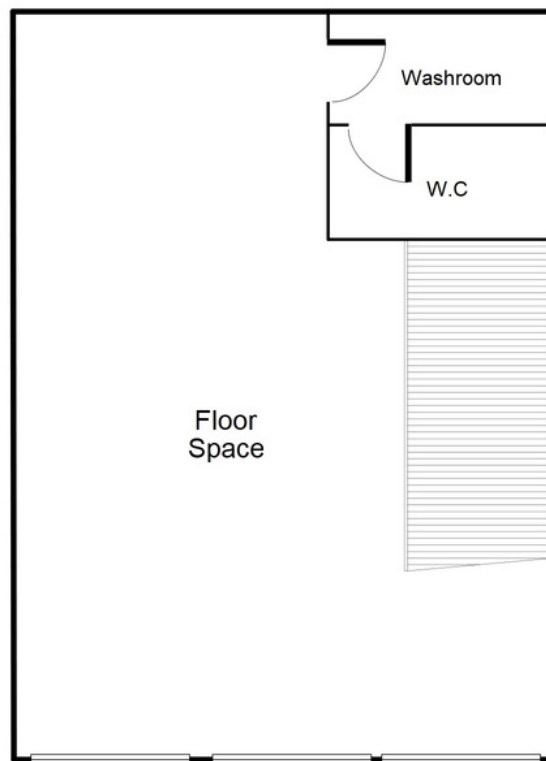
SALES & LETTINGS

TO LET - FIRST FLOOR OFFICE SPACE

Great Bridge High Street, Tipton

£600 PCM

Ground Floor



This floorplan is just an example, this is not to scale.
Please see description for exact room sizes.
(c) Soul Estates

FIRST FLOOR UNIT APPROX.: 410 SQ FT



SOUL ESTATES
SALES & LETTINGS

CONTACT US

Soul Estates
20 Great Bridge
Tipton
DY4 7HA

0121 647 6779

www.soulestates.co.uk

WWW.SOULESTATES.CO.UK | 0121 647 6779