



Brandon Way

West Bromwich



  
Brandon Way  
West Bromwich

*For Sale*

Brandon Way,  
West Bromwich,  
B70 8JW

3 Bedroom  
Mid-Terraced  
House

# Description

Soul Estates are proud to present this well-presented 3-bedroom mid-terraced house For Sale. This perfect family home is situated in a very popular area of West Bromwich, within walking distance to excellent schools, shops, amenities, public transport links and easy access to motorway networks.

The property offers an entrance hallway with stairs leading to the first floor and also to the spacious lounge. The lounge has windows to the front and rear of the property to let in the natural light. The family kitchen with a range of wall and base units to match, splashback tiling. The kitchen also has access to the front and rear of the property and under stairs storage area.

Stairs lead to the first-floor landing which leads off to, two double bedrooms, a single bedroom and a family bathroom with a separate WC. The property also benefits from gas central heating and double glazing, a large rear garden with decking and 2 sheds.

# The finer details



BEAUTIFULLY PRESENTED  
MID-TERRACED FAMILY  
HOME



THREE GOOD SIZED  
BEDROOMS



LARGE LOUNGE



KITCHEN & BREAKFAST AREA



FRONT & REAR GARDEN



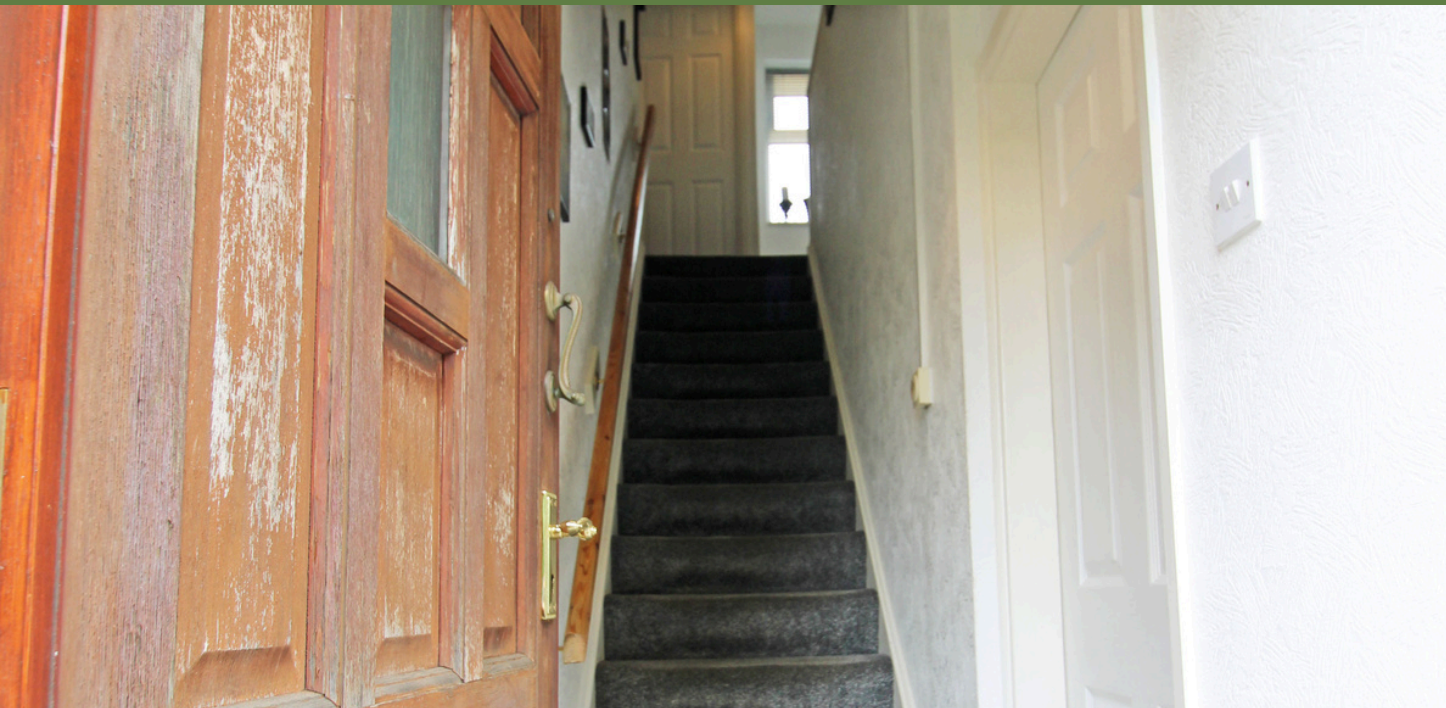
IDEAL FIRST-TIME BUYERS OR  
INVESTMENTS



SOUGHT AFTER AREA



GOOD SCHOOLS & LOCAL  
AMENITIES















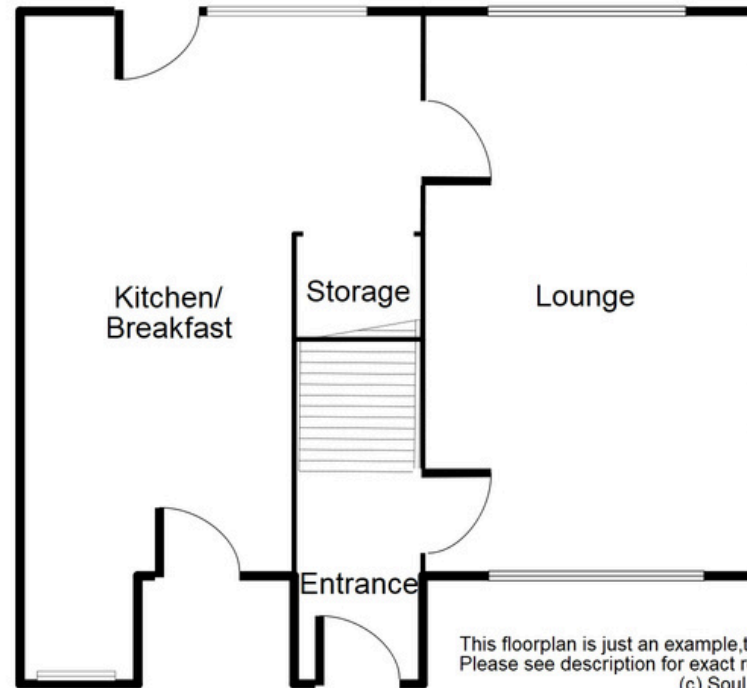






**GROUND FLOOR  
FLOORPLAN**

# Ground Floor



This floorplan is just an example, this is not to scale.  
Please see description for exact room sizes.  
(c) Soul Estates

**LOUNGE**

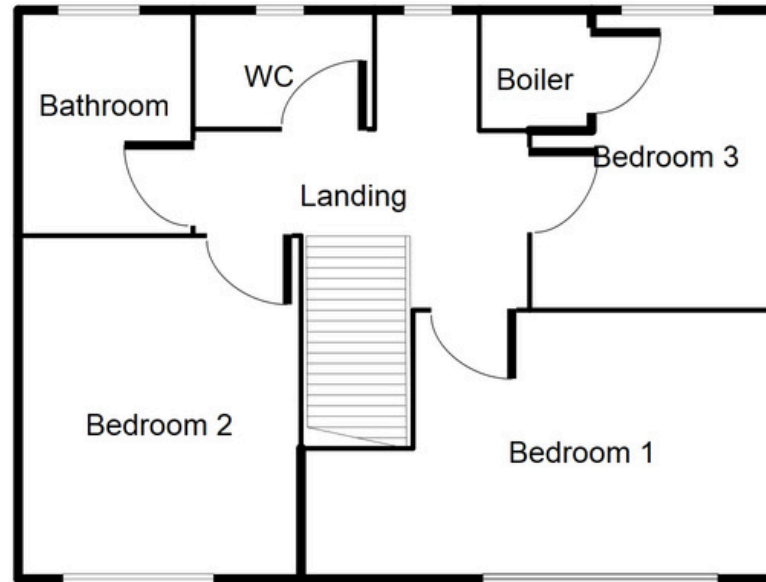
18' 3" X 10' 9" (5.56M X 3.27M)

**KITCHEN / BREAKFAST:**

17' 2" X 11' 10" (5.23M X 3.60M)  
APPROX.

**FIRST FLOOR  
FLOORPLAN**

# First Floor



This floorplan is just an example, this is not to scale.  
Please see description for exact room sizes.  
(c) Soul Estates

**LANDING:**

11' 7" X 9' 5" (3.53M X 2.87M)

**BEDROOM ONE::**

1' 1" X 10' 1" (3.38M X 3.07M)

**BEDROOM TWO::**

12' 7" X 8' 8" (3.83M X 2.64M)

**BEDROOM THREE:**

7' 11" X 8' 3" (2.41M X 2.51M)

**WC:**

2' 6" X 5' 1" (0.76M X 1.55M)

**BATHROOM:**

5' 6" X 5' 5" (1.68M X 1.65M)



# Brandon Way

## West Bromwich

### CONTACT US

Soul Estates  
20 Great Bridge  
Tipton  
DY4 7HA

0121 647 6779

[www.soulestates.co.uk](http://www.soulestates.co.uk)

