



# SOUL ESTATES

## SALES & LETTINGS

### TO LET - 3 BEDROOM HOUSE

**Wheelwright Close, Wednesbury, WS10 8RP    £1,200 PCM**

Soul Estates are proud to present this well presented 3 bedroom semi-detached house To Let. This perfect family home is situated in a very popular area of Wednesbury. Situated near Darlaston ASDA with good schools, local amenities and transport links and close to Wolverhampton and Walsall.

The property offers an entrance hall with rooms going off to the downstairs W.C, spacious lounge and family kitchen with a separate dining room. Kitchen with a range of wall and base units to match, splashback tiling, gas hob with an electric oven.

Stairs leading to the first-floor landing which leads off to three bedrooms, family bathroom and storage cupboard. The property also benefits gas central heating and double glazing, low maintenance front and rear garden with off-road parking and a single car garage.

✓ **PERFECT FAMILY HOME**

✓ **3 BEDROOM SEMI-DETACHED HOUSE**

✓ **SPACIOUS LOUNGE**

✓ **DRIVEWAY / GARAGE**











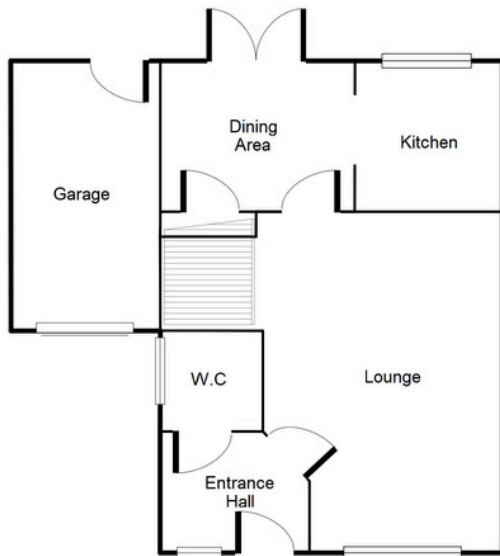
# SOUL ESTATES

## SALES & LETTINGS

### TO LET - 3 BEDROOM HOUSE

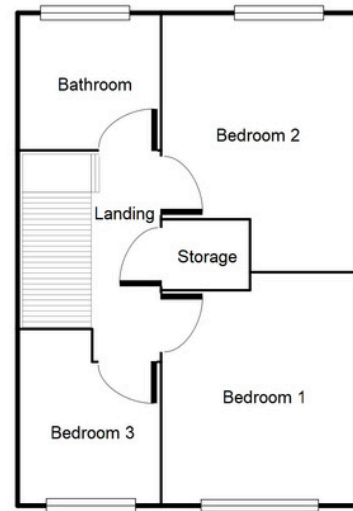
Wheelwright Close, Wednesbury, WS10 8RP    £1,200 PCM

Ground Floor



This floorplan is just an example this is not to scale.  
Please see description for exact room sizes.  
(c) Soul Estates

First Floor



This floorplan is just an example this is not to scale.  
Please see description for exact room sizes.  
(c) Soul Estates

**Entrance Hall**

3' 10" x 6' 6" (1.17m x 1.98m)

**W.C**

4' 7" x 4' 0" (1.40m x 1.22m)

**Lounge**

16' 3" x 11' 10" (4.95m x 3.60m)

**Dining Room**

9' 0" x 7' 5" (2.74m x 2.26m)

**Kitchen**

9' 0" x 6' 11" (2.74m x 2.11m)

**Landing**

9' 0" x 6' 4" (2.74m x 1.93m)

**Bedroom 1**

14' 0" x 8' 0" (4.26m x 2.44m)

**Bedroom 2**

11' 3" x 8' 0" (3.43m x 2.44m)

**Bedroom 3**

9' 0" x 6' 4" (2.74m x 1.93m)

**Bathroom**

6' 2" x 6' 4" (1.88m x 1.93m)



**SOUL ESTATES**  
SALES & LETTINGS

**CONTACT US**

Soul Estates  
20 Great Bridge  
Tipton  
DY4 7HA

0121 647 6779

[www.soulestates.co.uk](http://www.soulestates.co.uk)

[WWW.SOULESTATES.CO.UK](http://WWW.SOULESTATES.CO.UK) | 0121 647 6779