



# SOUL ESTATES

## SALES & LETTINGS

### TO LET - 3 BEDROOM HOUSE

**Richard Bradley Way, Tipton, DY4 9FD**

**£1,350 PCM**

Soul Estates are proud to present this well presented 3 bedroom detached house To Let. This perfect family home is situated in a very popular area of Tipton. Situated near Mad O'Rourke's Pie Factory with good schools, local amenities and transport links between Wolverhampton and Birmingham and close to Tipton Train Station. The property offers an entrance hall leading to the downstairs W.C, fitted kitchen/diner and spacious lounge. Kitchen with a range of wall and base units to match, splashback tiling, gas hob with an electric oven. Stairs leading to the first-floor landing which leads off to, three bedrooms with the master bedroom including an en-suite and a family bathroom. The property also benefits gas central heating and double glazing, low maintenance front and rear garden with off-road parking.

✓ **3 BEDROOM DETACHED HOUSE**

✓ **PERFECT FAMILY HOME**

✓ **DUAL ASPECT SPACIOUS LOUNGE**

✓ **KITCHEN/DINER**











# SOUL ESTATES

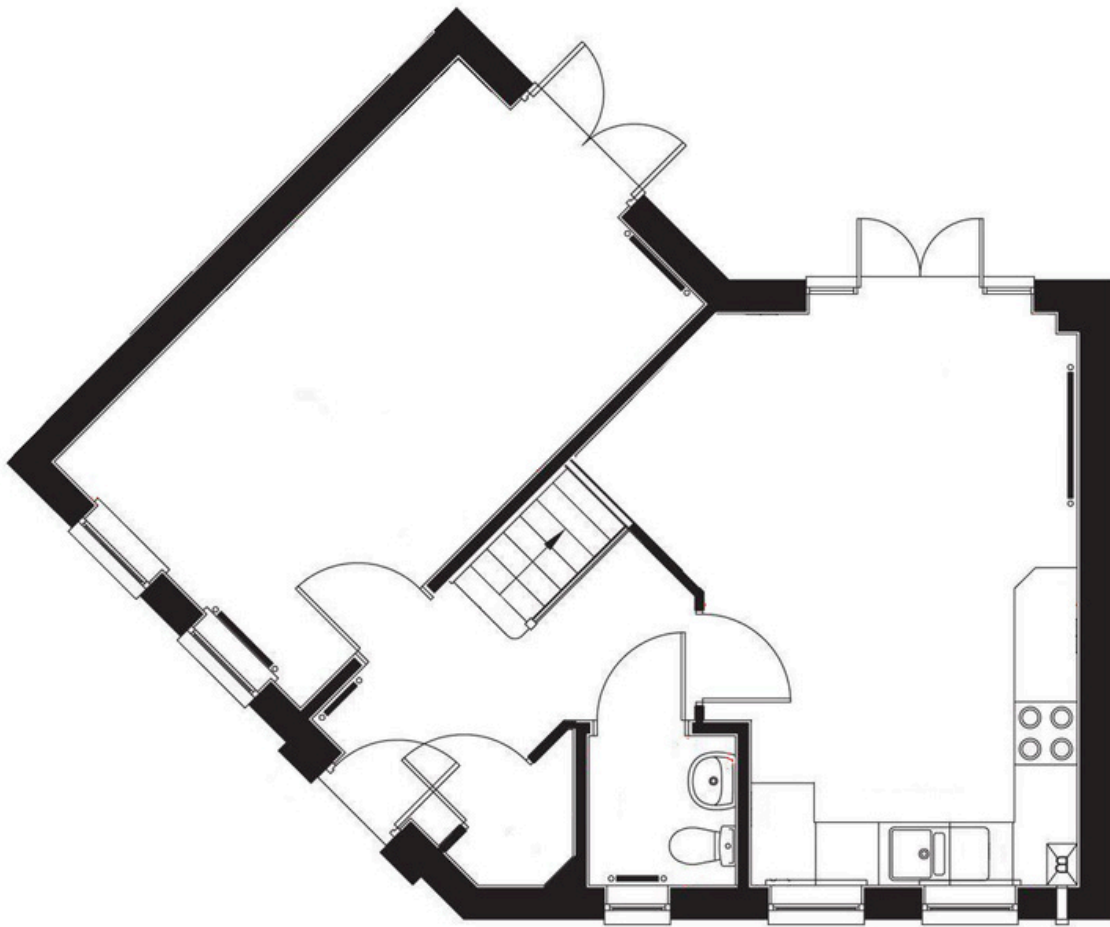
## SALES & LETTINGS

### TO LET - 3 BEDROOM HOUSE

Richard Bradley Way, Tipton, DY4 9FD

£1,350 PCM

## GROUND FLOOR



#### Entrance Hall

12' 1" x 5' 7" (3.68m x 1.70m)

#### W.C

4' 6" x 4' 9" (1.37m x 1.45m)

#### Kitchen / Diner

15' 7" x 18' 6" (4.75m x 5.63m)

#### Lounge

17' 9" x 10' 9" (5.41m x 3.27m)



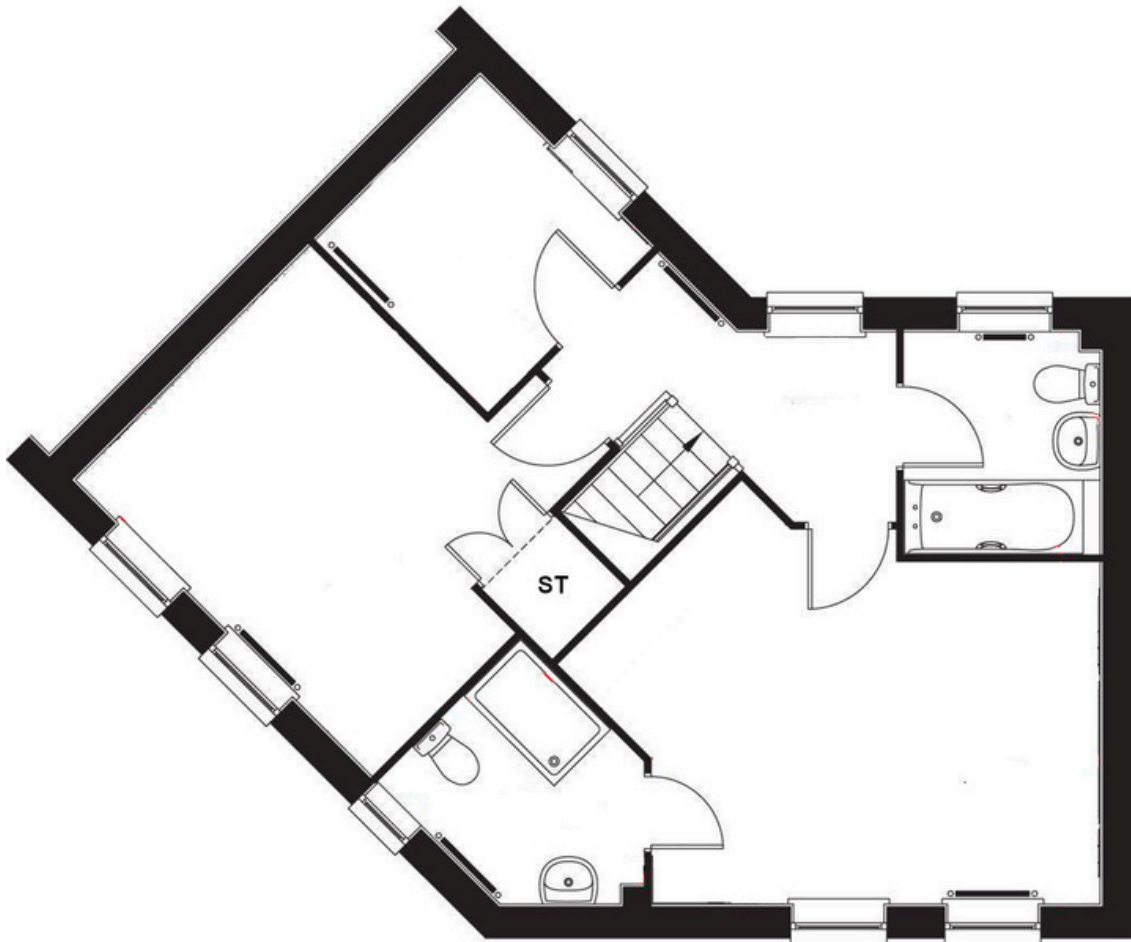
**SOUL ESTATES**  
SALES & LETTINGS

**TO LET - 3 BEDROOM HOUSE**

**Richard Bradley Way, Tipton, DY4 9FD**

**£1,350 PCM**

**FIRST FLOOR**



**First Floor Landing**

6' 2" x 11' 0" (1.88m x 3.35m)

**Master Bedroom**

10' 7" x 13' 11" (3.22m x 4.24m)

**Master Ensuite**

6' 4" x 7' 10" (1.93m x 2.39m)

**Bedroom 2**

10' 3" x 13' 0" (3.12m x 3.96m)

**Bedroom 3**

7' 2" x 7' 5" (2.18m x 2.26m)

**Bathroom**

6' 10" x 6' 0" (2.08m x 1.83m)