



SOUL ESTATES

SALES & LETTINGS

TO LET - 3 BEDROOM HOUSE

Ashley Street, Bilston, WV14 7NW

£900 PCM

Soul Estates are proud to present this well presented 3 bedroom terraced house To Let. This perfect family home is situated in a very popular area of Bilston. Situated near Bilston Town Centre with good schools, local amenities and transport links.

The property offers an entrance leading into the spacious first reception, second reception, fitted kitchen and downstairs shower room. Kitchen with a range of wall and base units to match, splashback tiling.

Stairs leading to the first-floor landing which leads off to, two bedrooms and a family bathroom.

Stairs further leading to the second-floor which leads to bedroom one. The property also benefits gas central heating and double glazing, low maintenance front and rear garden with ample on street parking.

✓ **3 BEDROOM HOUSE**

✓ **SPACIOUS LOUNGE**

✓ **KITCHEN DINING ROOM**

✓ **FULLY FURNISHED**









SOUL ESTATES

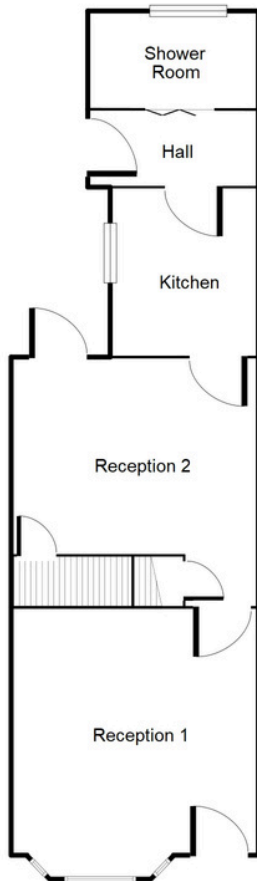
SALES & LETTINGS

TO LET - 3 BEDROOM HOUSE

Ashley Street, Bilston, WV14 7NW

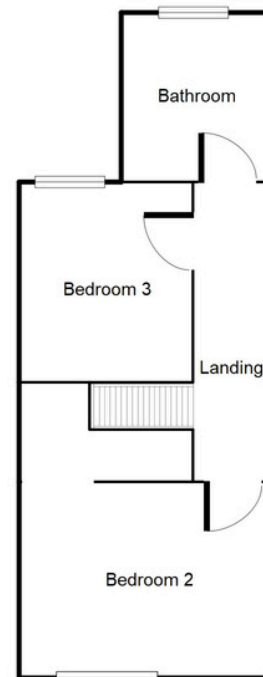
£900 PCM

Ground Floor



This floorplan is just an example, this is not to scale.
Please see description for exact room sizes.
(c) Soul Estates

First Floor



This floorplan is just an example, this is not to scale.
Please see description for exact room sizes.
(c) Soul Estates



SOUL ESTATES

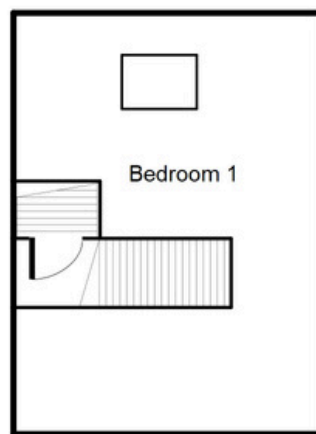
SALES & LETTINGS

TO LET - 3 BEDROOM HOUSE

Ashley Street, Bilston, WV14 7NW

£900 PCM

Second Floor



This floorplan is just an example, this is not to scale.
Please see description for exact room sizes.
(c) Soul Estates

Reception Room 1

13' 9" x 11' 7" (4.19m x 3.53m)

Reception Room 2

11' 4" x 11' 7" (3.45m x 3.53m)

Kitchen

8' 10" x 6' 4" (2.69m x 1.93m)

Hall

3' 0" x 7' 7" (0.91m x 2.31m)

Shower Room

3' 10" x 6' 8" (1.17m x 2.03m)

First Floor Landing

17' 0" x 3' 0" (5.18m x 0.91m)

Bedroom 2

8' 2" x 11' 7" (2.49m x 3.53m)

Bedroom 3

11' 3" x 8' 4" (3.43m x 2.54m)

Bedroom 1

17' 6" x 11' 7" (5.33m x 3.53m)

Bathroom

8' 10" x 6' 4" (2.69m x 1.93m)