



SOUL ESTATES

SALES & LETTINGS

TO LET - 3 BEDROOM HOUSE

Dam Mill Close, Wolverhampton, WV8 1TZ

£950 PCM

Soul Estates are proud to present this well-presented 3-bedroom mid-terraced house To Let. This perfect family home is situated in a very popular area of Codsall, Wolverhampton. Situated near Billbrook Train Station with good schools, local amenities and transport links and close to Codsall High School and Aldersley High School.

The property offers an entrance hall with rooms going off to the family kitchen, lounge and downstairs W.C. Kitchen with a range of wall and base units to match, splashback tiling, gas hob with an electric oven. Stairs leading to the first-floor landing which leads off to two bedrooms and a family bathroom. Stairs further leading to the second-floor landing which leads off to the large master bedroom with an en-suite. The property also benefits gas central heating and double glazing, low maintenance front and rear garden with off-road parking.

✓ **PERFECT FAMILY HOME**

✓ **NEWLY FITTED KITCHEN**

✓ **3 BEDROOM MID-TERRACED HOUSE**

✓ **MASTER BEDROOM WITH EN-SUITE**











SOUL ESTATES

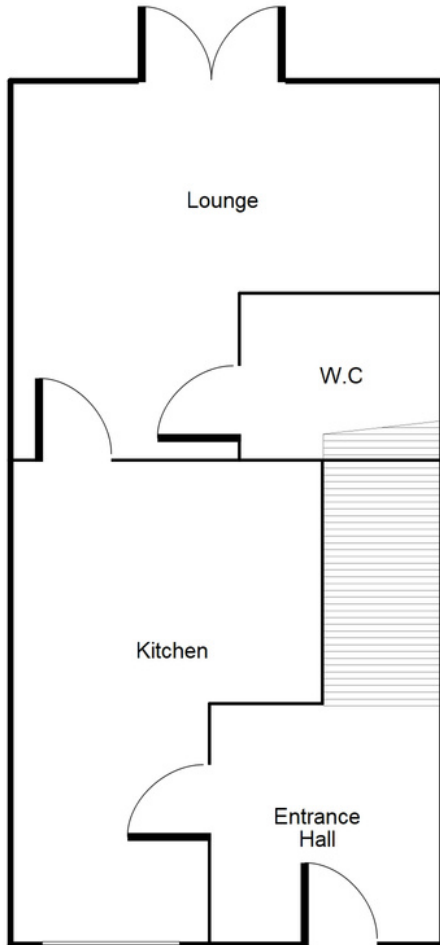
SALES & LETTINGS

TO LET - 3 BEDROOM HOUSE

Dam Mill Close, Wolverhampton, WV8 1TZ

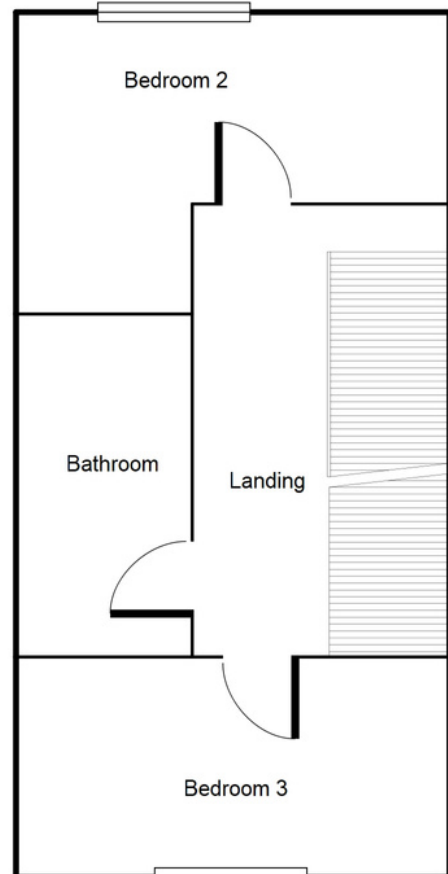
£950 PCM

Ground Floor



This floorplan is just an example, this is not to scale.
Please see description for exact room sizes.
(c) Soul Estates

First Floor



This floorplan is just an example, this is not to scale.
Please see description for exact room sizes.
(c) Soul Estates



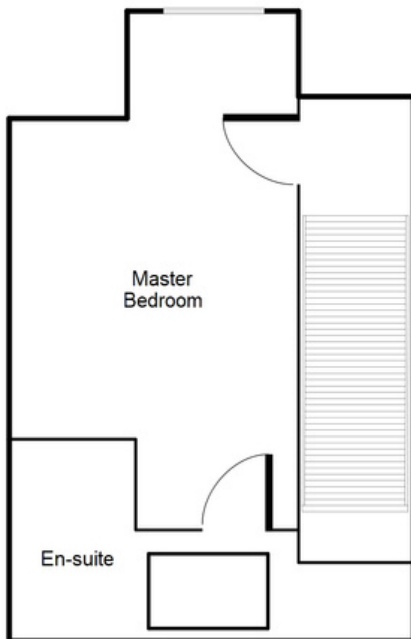
SOUL ESTATES
SALES & LETTINGS

TO LET - 3 BEDROOM HOUSE

Dam Mill Close, Wolverhampton, WV8 1TZ

£950 PCM

Second Floor



This floorplan is just an example, this is not to scale.
Please see description for exact room sizes.
(c) Soul Estates

Entrance Hall

4' 5" x 6' 6" (1.35m x 1.98m)

Kitchen

10' 10" x 6' 2" (3.30m x 1.88m)

Lounge

14' 2" x 11' 1" (4.31m x 3.38m)

W.C

4' 0" x 4' 9" (1.22m x 1.45m)

Landing

12' 10" x 2' 11" (3.91m x 0.89m)

Bedroom 2

9' 9" x 11' 0" (2.97m x 3.35m)

Bedroom 3

5' 7" x 11' 0" (1.70m x 3.35m)

Bathroom

9' 3" x 5' 1" (2.82m x 1.55m)

Master Bedroom

16' 11" x 8' 2" (5.15m x 2.49m)

En-Suite

5' 5" x 11' 0" (1.65m x 3.35m)

CONTACT US

Soul Estates
20 Great Bridge
Tipton
DY4 7HA

0121 647 6779

www.soulestates.co.uk



WWW.SOULESTATES.CO.UK | 0121 647 6779