



Bodden Street, Lowton, WA3 1DX

£159,950

*Here at Stonecross we are delighted to bring to market this TWO BEDROOM MID TERRACED PROPERTY situated in the heart of the village of Lowton, St Mary's. A stones throw away from Pennington flash and a short car drive to a range of local amenities ie shops, schools and local bus routes. This property comprises of lounge & kitchen/diner to the ground floor and to the first floor there is a family bathroom and two bedrooms. Externally to the front and rear there are enclosed gardens. ***PLEASE CONTACT US TO ARRANGE A VIEWING****

- Two Bedrooms
- Mid-Terraced
- Enclosed Rear Garden
- Front Yard
- On Street parking

Lounge

12' 0" x 13' 6" (3.659m x 4.126m)

Via Composite front door, UPVC double glazed window to front elevation, wall mounted radiator, ceiling light point, laminate flooring, fire and mantle.



Kitchen/Diner

13' 6" x 11' 9" (4.107m x 3.582m)

UPVC double glazed window to rear elevation, UPC double glazed door to rear elevation, wall mounted radiator, 9 spotlights, part tiled walls, tiled floor, stairs to first floor and understairs storage. There are a range of wall, base and drawer units, stainless steel sink unit with swan neck tap, space for fridge/freezer, space for dishwasher, oven, induction hob and extractor.



First Floor

Landing

Wall mounted radiator, ceiling light point and loft access.

Bedroom One

9' 7" x 13' 8" (2.917m x 4.155m)

UPVC double glazed window to front elevation, wall mounted radiator and ceiling light point.

Bedroom Two

6' 4" x 11' 11" (1.939m x 3.643m)

UPVC double glazed window to rear elevation, wall mounted radiator and ceiling light point.

Bathroom

11' 9" x 6' 7" (3.59m x 2.007m)

UPVC double glazed frosted window to rear elevation, heated towel radiator, six spotlights, part tiled walls, corner shower, bath, WC and sink unit.



Outside

Front

Enclosed with brick wall and gate, block paving and decorative stones.

Rear

Enclosed with gate to rear, artificial grass and patio.

Tenure

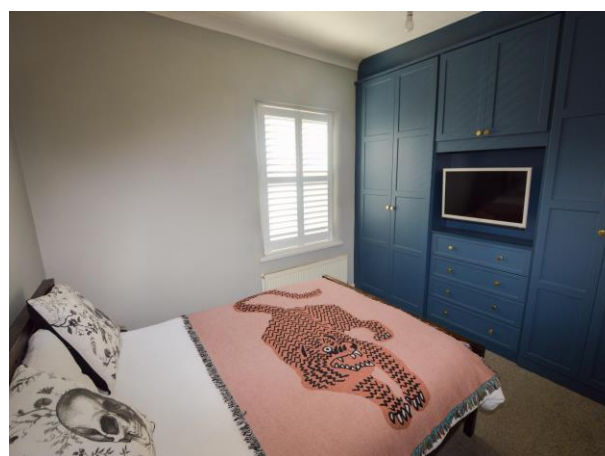
Leasehold

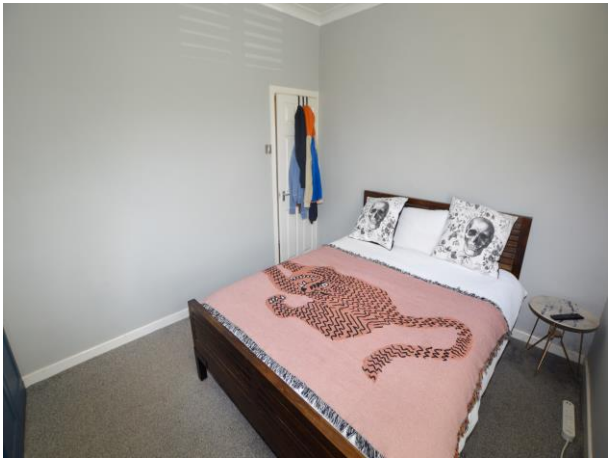
Council Tax

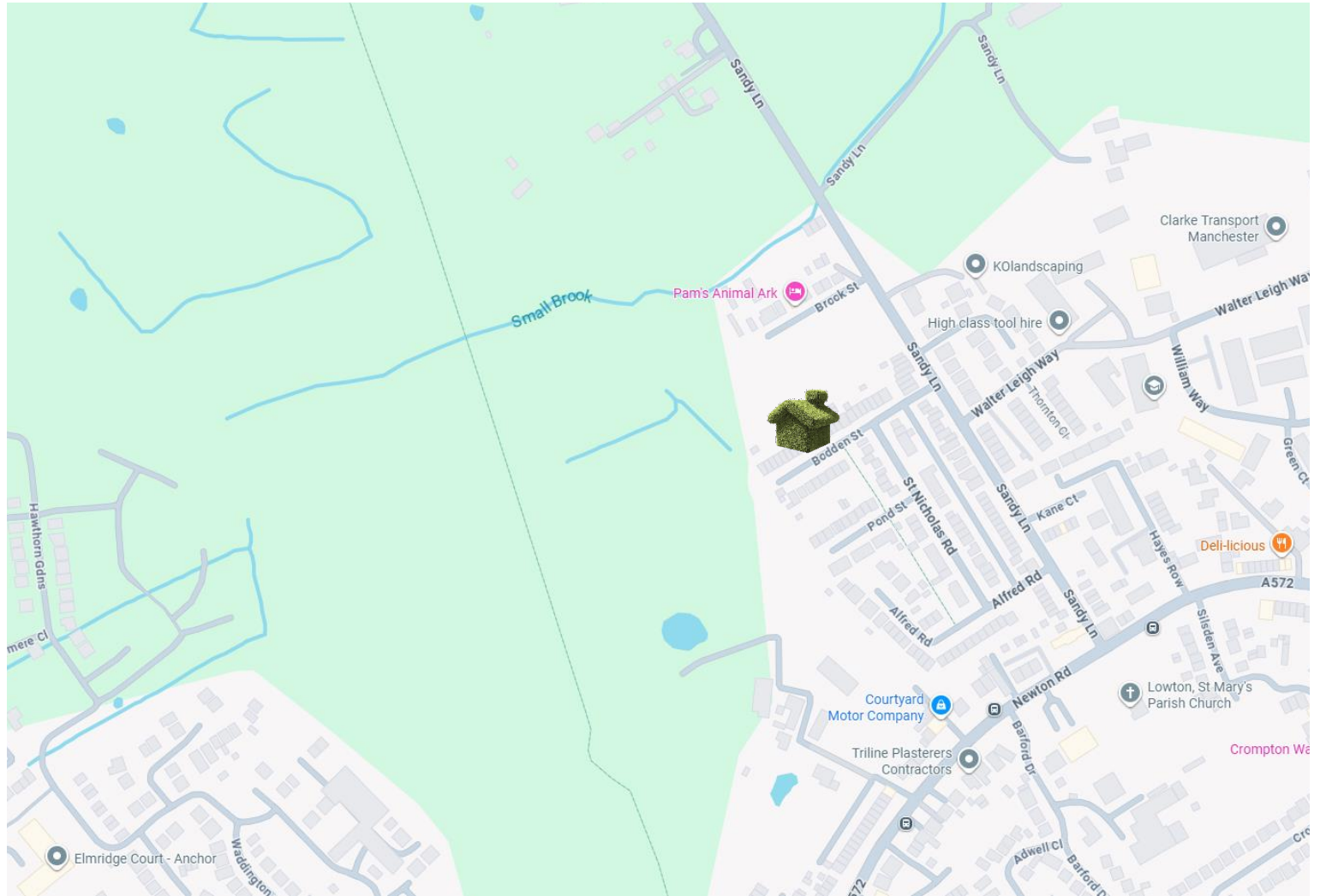
A



*Please note if any appliances are included in the property.
These items have not been tested by Stone Cross Estate Agents,
this is the responsibility of the buyer.*







Please note if any appliances are included in the property. These items have not been tested by Stone Cross Estate Agents; this is the responsibility of the buyer.

Viewing of this property is strictly by appointment through Stone Cross Estate Agents.

Please note that it is not Stone Cross Estate Agents policy to test any services or appliances, on properties offered for sale. All measurements and floor plans are approximate and for guidance purposes only. No responsibility is taken for any error, omissions or misstatements. A Solicitor must confirm the tenure of this property.

Stone Cross Estate Agents LTD

sales@stonecrossea.co.uk