



1 Express Wharf, 3 Hutchings Street, Canary Wharf, London, E14 8JP

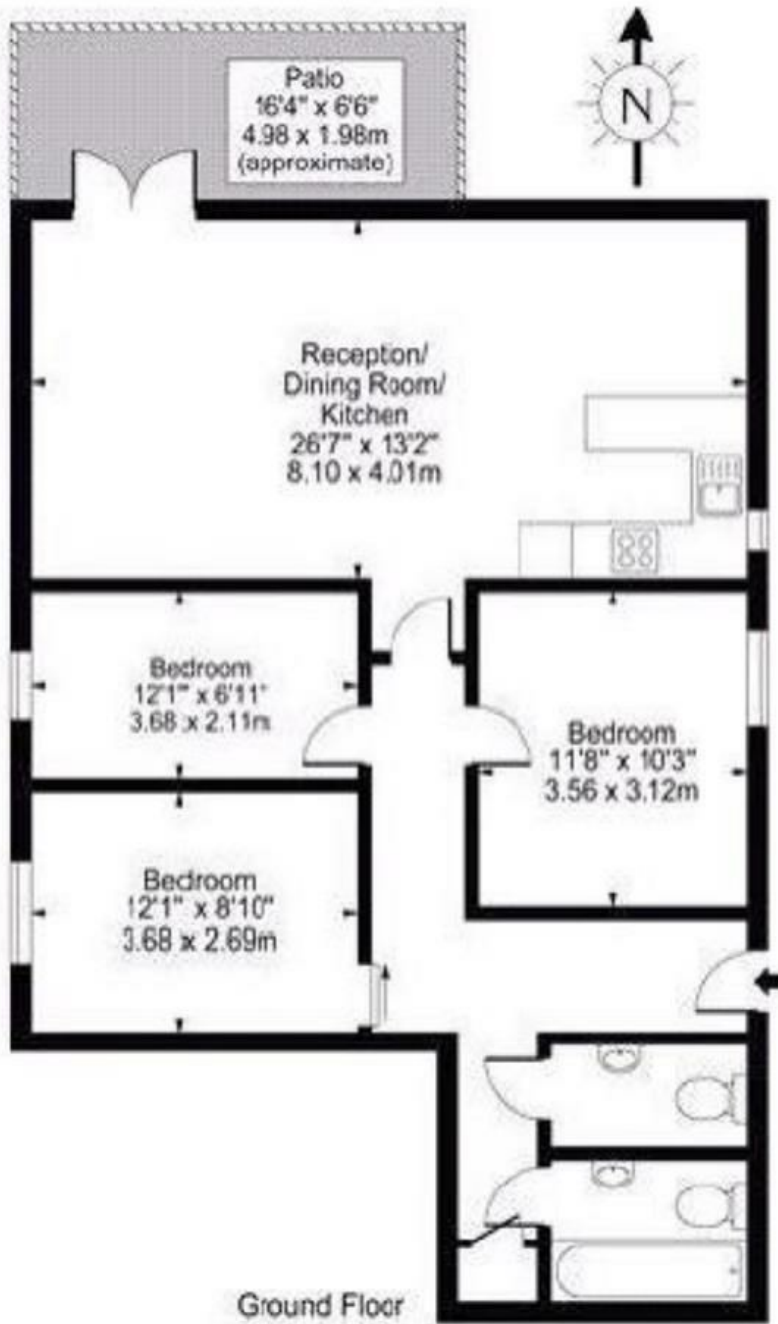
**** FOR RENT **** A Large Three Double Bedroom Modern Apartment perfectly positioned for Canary Wharf & the River Thames, this property benefits from gas central heating (untested), double glazing, white bathroom suite with separate toilet, private courtyard garden, three bedrooms & a large open plan kitchen-reception room. The property is also ideally located for Canary Wharf and South Quay Stations and an internal inspection is strongly recommended. 12 months AST, 5 weeks rent deposit, Available now. For further information or to arrange a viewing please call Clarke Hillyer on 0208 506 9800. (RES)

- Three Bedroom Modern Apartment
- Canary Wharf Location
- Gas Fired Central Heating
- Close to Tube Station & DLR
- Double Glazed
- Council Tax Band - D
- River Side Position
- Available Now

£2,500 Per Calendar Month

Hutchings Street, E14

Approx. Gross Internal Area 903 Sq Ft - 83.89 Sq M



Energy Efficiency Rating		
	Current	Potential
Very energy efficient - lower running costs		
(92 plus) A		
(81-91) B	80	80
(69-80) C		
(55-68) D		
(39-54) E		
(21-38) F		
(1-20) G		
Not energy efficient - higher running costs		
England & Wales	EU Directive 2002/91/EC	