

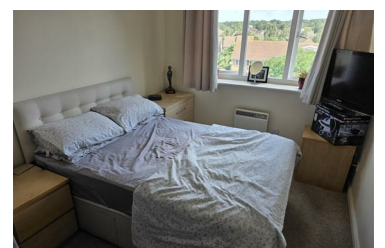
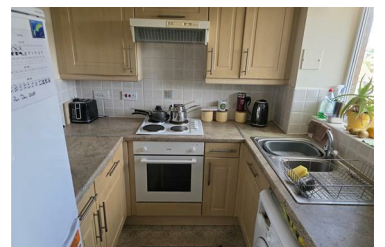


117 St Leonards Close, Grays, RM17 6GT

**Offers In The Region Of £219,995**



**\*\*TWO BEDROOM FLAT FOR SALE \*\*** - Clarke Hillyer are pleased to present this two bedroom purpose built flat with large lounge, electric heating & allocated parking. Close to Grays Town Centre and mainline station, which serves on the c2c line which provides direct access to Central London and surrounding areas, as well as easy access to Lakeside, M25 and A13, Service Charge - 1,800 per annum, Lease Length - approx. 970 years, Ground Rent - None For further information or to arrange an inspection please call Clarke Hillyer on 020 8501 9220.



- Two Bedroom Apartment
- Large Lounge
- Allocated Parking
- Close to Mainline Station
- Chain Free
- Council Tax Band - C