

EARLS PARK — III —

BRISTOL ROAD, GLOUCESTER, GL1 5NY



EARL'S PARK II

GLOUCESTER

MATTHEW HOMES

OVER 45 YEARS OF QUALITY

Matthew Homes Limited, is a privately owned housebuilder specialising in the construction of homes throughout the South East of England.

Established in 1976 Matthew Homes has been building homes for over 45 years and prides itself on building quality homes in a variety of locations that compliment the tradition and character of each individual site.

Our homes range from one-bedroom apartments ideally suited for first time buyers to five bedroomed generously proportioned houses for the more established family.

Based in Potters Bar, Hertfordshire, we operate throughout the Home Counties, into Cambridgeshire, Norfolk and Suffolk to the North, to the west in Oxfordshire and Gloucestershire and to the South into Kent & East/West Sussex.

SPECIFICATION

Gas central heating

Vertical five panel internal doors

Chrome finish door furniture

UPVC double glazed windows

Lemongrass fitted kitchen

Integrated kitchen including under oven, gas hob (to houses), electric hob (to apartments), cooker hood, washing machine and dishwasher (houses only).

Choice of vinyl flooring to kitchen

(subject to stage of construction)

Choice wall tiling to bathroom and en-suite

(subject to stage of construction)

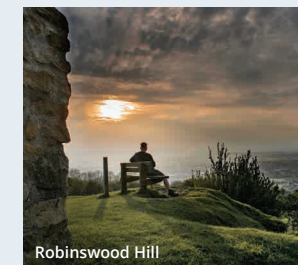
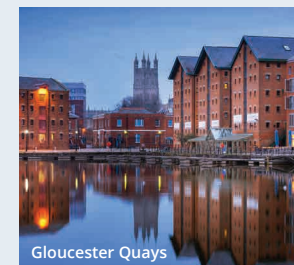
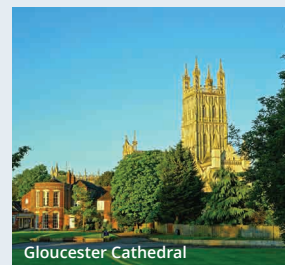
Roca sanitaryware

Chrome heated towel rails to bathroom and en-suite

Inset ceiling lights to kitchen, bathroom and en-suite

Electric car charging point to houses and selected apartments

NHBC cover



EARLS PARK — II —

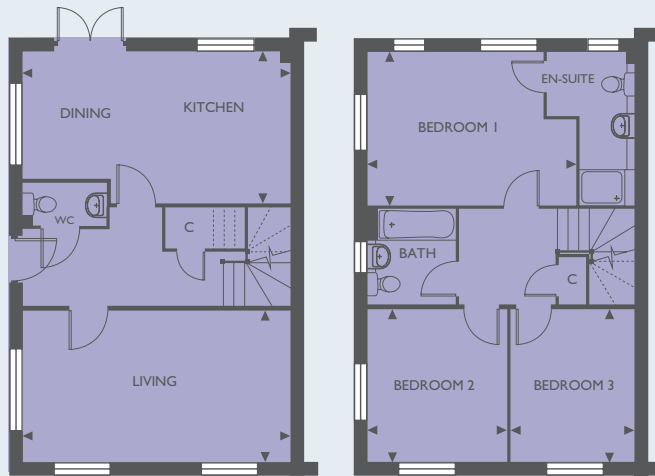




Belvoir and Clavering

BELVOIR

3 BEDROOM HOUSE



GROUND FLOOR

Living Room	5838 x 3287	19' 2" x 10' 9"
Kitchen/Dining	5838 (max) x 3275 (max)	19' 2" (max) x 10' 9" (max)

FIRST FLOOR

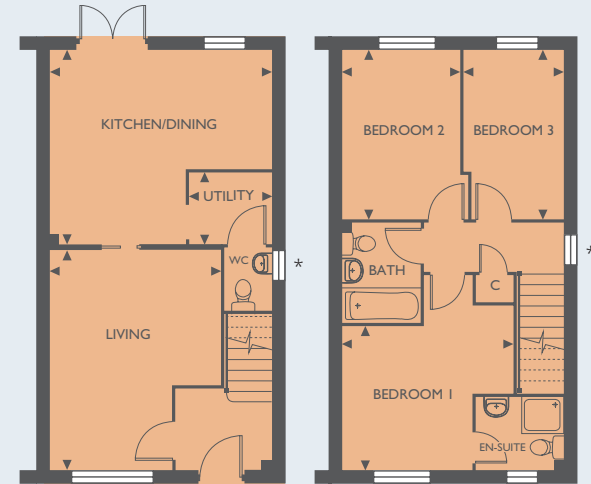
Bedroom 1	4548 (max) x 3350	14' 11" (max) x 11' 0"
Bedroom 2	3340 x 3045	10' 11" x 10' 0"
Bedroom 3	3340 x 2718	10' 11" x 8' 11"



Plot 269

CLAVERING

3 BEDROOM HOUSES



GROUND FLOOR

Living Room	4790 (max) x 3689 (max)	15' 9" (max) x 12' 1" (max)
Kitchen/Dining	4814 (max) x 4225 (max)	15' 10" (max) x 13' 10" (max)
Utility	1775 (max) x 1563 (max)	5' 10" (max) x 5' 2" (max)

FIRST FLOOR

Bedroom 1	3728 (max) x 3128 (min)	12' 3" (max) x 10' 3" (min)
Bedroom 2	3700 x 2564	12' 2" x 8' 5"
Bedroom 3	3700 x 2175	12' 2" x 7' 2"

*Note: WC & landing windows omitted to plots 260, 263, 264, 267, 270 & 271.
Some plots are handed versions shown and plot layouts may vary.

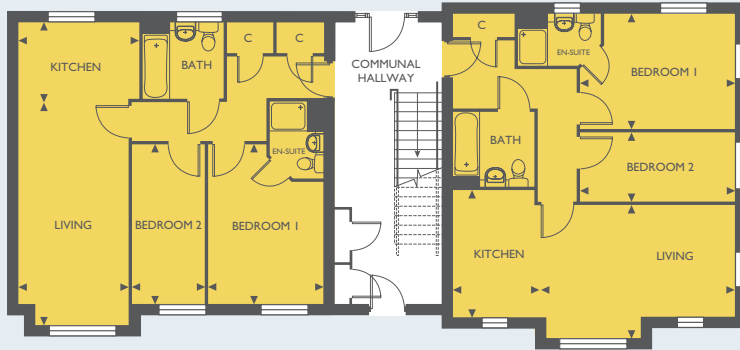


Plots 259 - 268, 270 & 271

BLOCKS H AND K

2 BEDROOM APARTMENTS

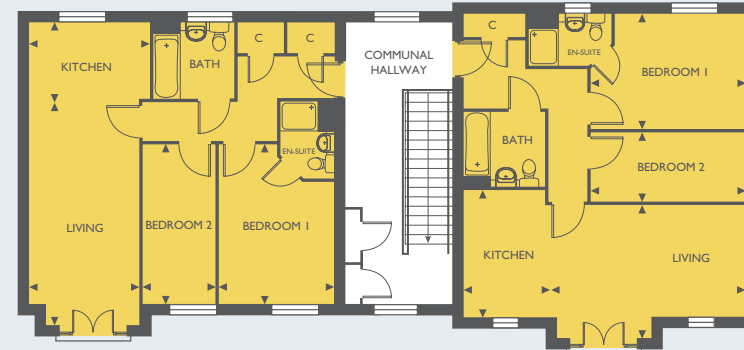
GROUND FLOOR



272 279

273 278

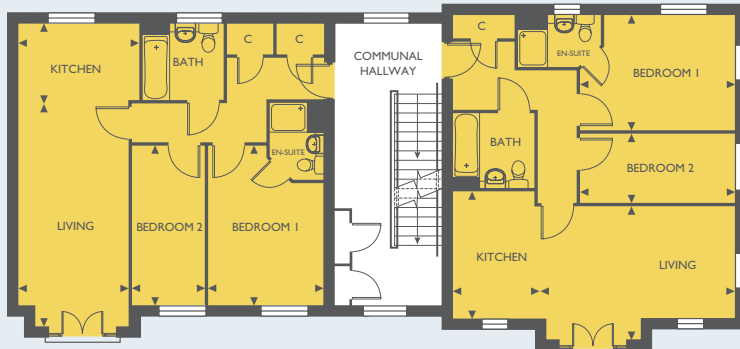
SECOND FLOOR



276 283

277 282

FIRST FLOOR



274 281

275 280

PLOTS 272, 274, 276, 279, 281, 283

Living Area	5953 (max) x 2890 (max)	19' 6" (max) x 9' 6" (max)
Kitchen Area	3185 x 2000	10' 5" x 6' 7"
Bedroom 1	4190 (max) x 3048 (max)	13' 9" (max) x 10' 0" (max)
Bedroom 2	4190 x 1947	13' 9" x 6' 5"

PLOTS 273, 275, 277, 278, 280, 282

Living Area	5240 x 3478 (max)	17' 2" x 11' 5" (max)
Kitchen Area	3327 x 2150	10' 11" x 7' 1"
Bedroom 1	4035 (max) x 3025 (max)	13' 3" (max) x 9' 11" (max)
Bedroom 2	4035 x 1850	13' 3" x 6' 1"

BLOCKS H AND K

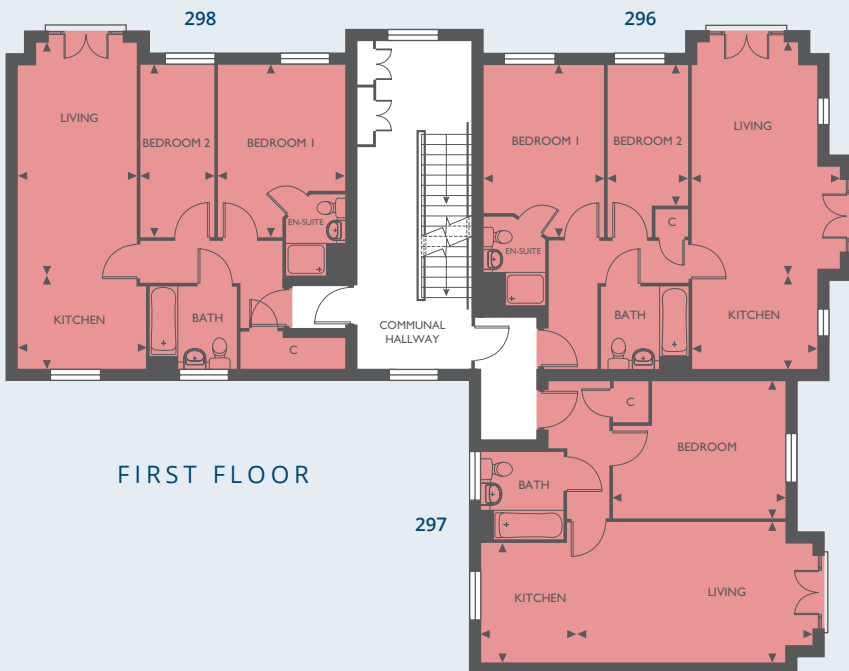
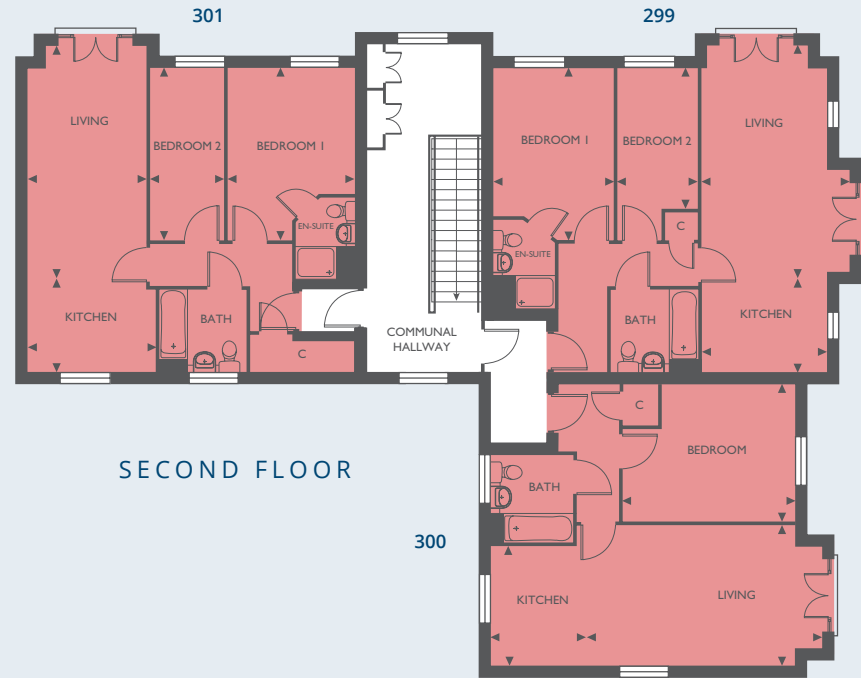
2 BEDROOM APARTMENTS



BLOCK G

1 & 2 BEDROOM APARTMENTS





PLOTS 293, 296, 299

Living Area	5903 (max) x 3598 (max)	19' 4" (max) x 11' 10" (max)
Kitchen Area	3048 x 2050	10' 0" x 6' 9"
Bedroom 1	4190 (max) x 2900 (max)	13' 9" (max) x 9' 6" (max)
Bedroom 2	3403 (min) x 1965	11' 2" (min) x 6' 5"

PLOTS 294, 297, 300

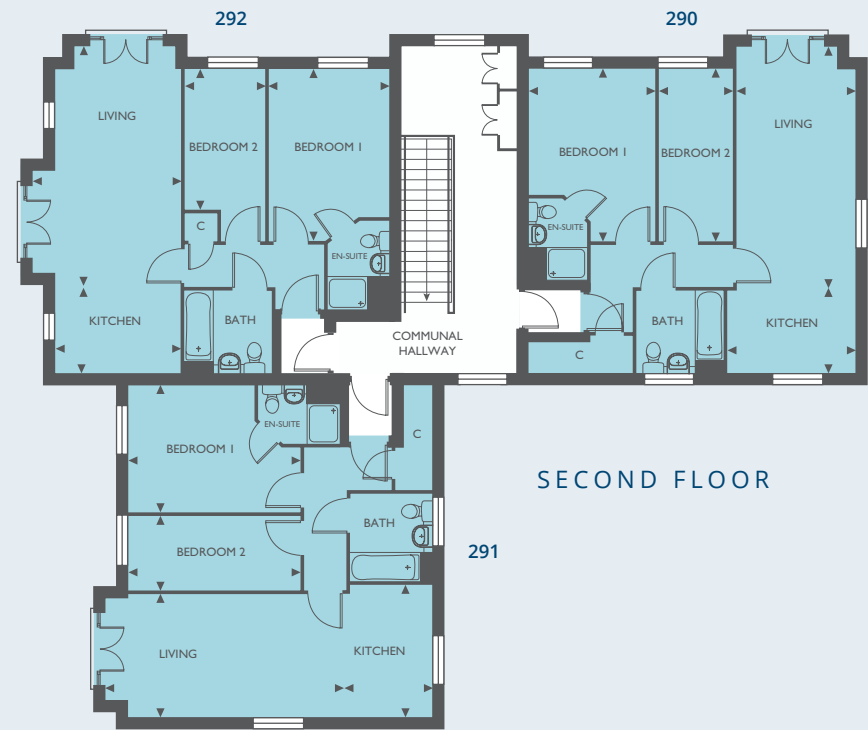
Living Area	5990 (max) x 3425 (max)	19' 8" (max) x 11' 3" (max)
Kitchen Area	2913 x 2075	9' 7" x 6' 10"
Bedroom	4190 (max) x 3350 (max)	13' 9" (max) x 11' 0" (max)

PLOTS 295, 298, 301

Living Area	5953 (max) x 2890 (max)	19' 6" (max) x 9' 6" (max)
Kitchen Area	3125 x 2000	10' 3" x 6' 7"
Bedroom 1	4190 (max) x 3100 (max)	13' 9" (max) x 10' 2" (max)
Bedroom 2	4190 x 1835	13' 9" x 6' 0"



GROUND FLOOR



SECOND FLOOR



FIRST FLOOR

PLOTS 284, 287, 290

Living Area	5953 (max) x 2890 (max)	19' 6" (max) x 9' 6" (max)
Kitchen Area	3125 x 2000	10' 3" x 6' 7"
Bedroom 1	4190 (max) x 3100 (max)	13' 9" (max) x 10' 2" (max)
Bedroom 2	4190 x 1835	13' 9" x 6' 0"

PLOTS 285, 288, 291

Living Area	5953 (max) x 3003 (max)	19' 6" (max) x 9' 10" (max)
Kitchen Area	3238 x 2000	10' 7" x 6' 7"
Bedroom 1	4190 (max) x 3100 (max)	13' 9" (max) x 10' 2" (max)
Bedroom 2	4190 x 1835	13' 9" x 6' 0"

PLOTS 286, 289, 292

Living Area	5903 (max) x 3598 (max)	19' 4" (max) x 11' 10" (max)
Kitchen Area	3048 x 2050	10' 0" x 6' 9"
Bedroom 1	4190 (max) x 2900 (max)	13' 9" (max) x 9' 6" (max)
Bedroom 2	3403 (min) x 1965	11' 2" (min) x 6' 5"

BLOCK J
2 BEDROOM APARTMENTS



