



6/7
Newhall Square
Charlotte Street
Birmingham B3 1RU

**Refurbished high quality office accommodation
close to Birmingham city centre**



1,788 to 7,464 sq ft



**Within Birmingham's
fashionable Jewellery Quarter**



**8 minutes from Birmingham
Snow Hill train station**



The **Jewellery Quarter** is an industry hub, home to more than **100 retailers, diamond dealers, and workshops**, as well as the Museum of the Jewellery Quarter. Indie stores, trendy bars, and art galleries fill the **resurgent area**, along with modern Indian and Italian eateries.



Modern office building



Flexible floor plates



Close to local amenities



3 miles from (J6) M6 motorway



6/7 Newhall Square at a glance

- **LED PIR lighting**
- **Suspended ceilings**
- **Ceiling ,mounted heating/ cooling**
- **New kitchen points and WCs**
- **Next to Spitfire Urbane & Legal & General's BTR Newhall Sq development**



Birmingham Moor Street

Bull Ring

Birmingham New Street

Colmore Row

Paradise development

Library of Birmingham

Birmingham Snow Hill

St Paul's Square

NCP Car Parking

6/7 Newhall Square





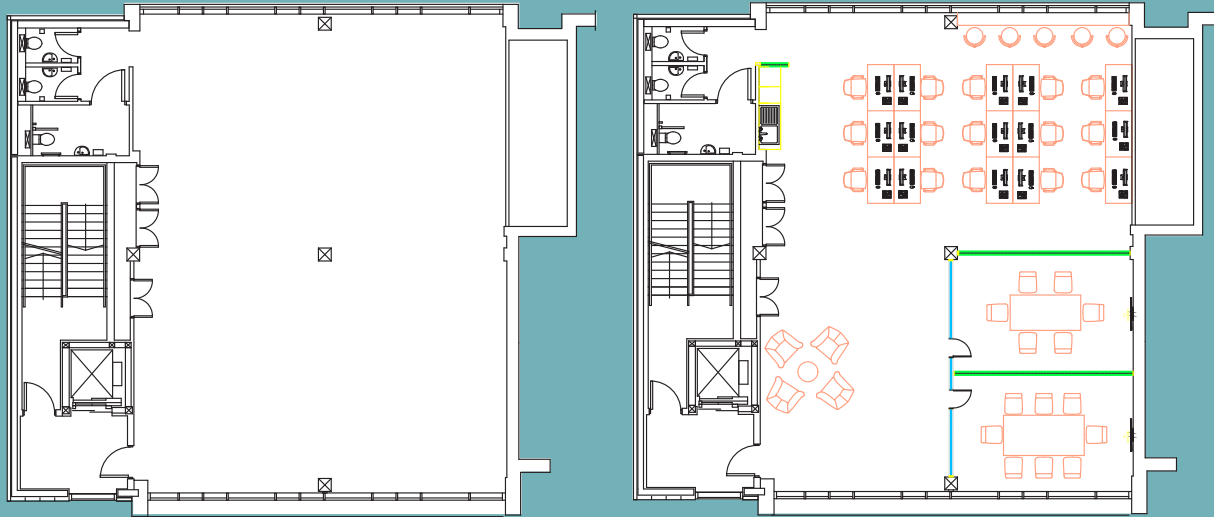
1st Floor:
1,892 sq ft

2nd Floor:
1,892 sq ft

3rd Floor:
1,892 sq ft

4th Floor:
1,788 sq ft

Total:
7,464 sq ft



6/7

Newhall Square
Charlotte Street
Birmingham B3 1RU

Lease Terms: Available by way of a new lease direct from the Landlord on terms to be agreed.

VAT: The property is elected for VAT.

EPC: The property has an EPC Rating of B(34).

Viewings: Strictly by appointment.

For further information please contact:

centrick

Alex Tross

Alex.tross@centrick.co.uk

M: 07789 027191

**BNP PARIBAS
REAL ESTATE**

Julie Perks

julie.perks@realestate.bnpparibas

M: 07469 404041

Misrepresentations Act 1967. Unfair Contract Terms 1977. Consumer Protection Regulations under Unfair Trading Regulations 2008. The Business Protection Regulations from Misleading Marketing Regulations 2008. These particulars are issued without any responsibility on the part of the agent and are not to be construed as containing any representations or fact upon which any person is entitled to rely. Neither the agent or any person in their employ has an authority to make or give any representation or warrant whatsoever in relation to the property. June 23

