



Key Features

- ◆ Two-bedroom, second-floor apartment
- ◆ Sought after Little Chelsea area of Eastbourne
- ◆ Walking distance from town centre and train station
- ◆ Close to Theatre District and seafront
- ◆ Neutral Decor
- ◆ EPC rating D

2  1  1 

South Street, Little Chelsea, Eastbourne

£1,150 PCM



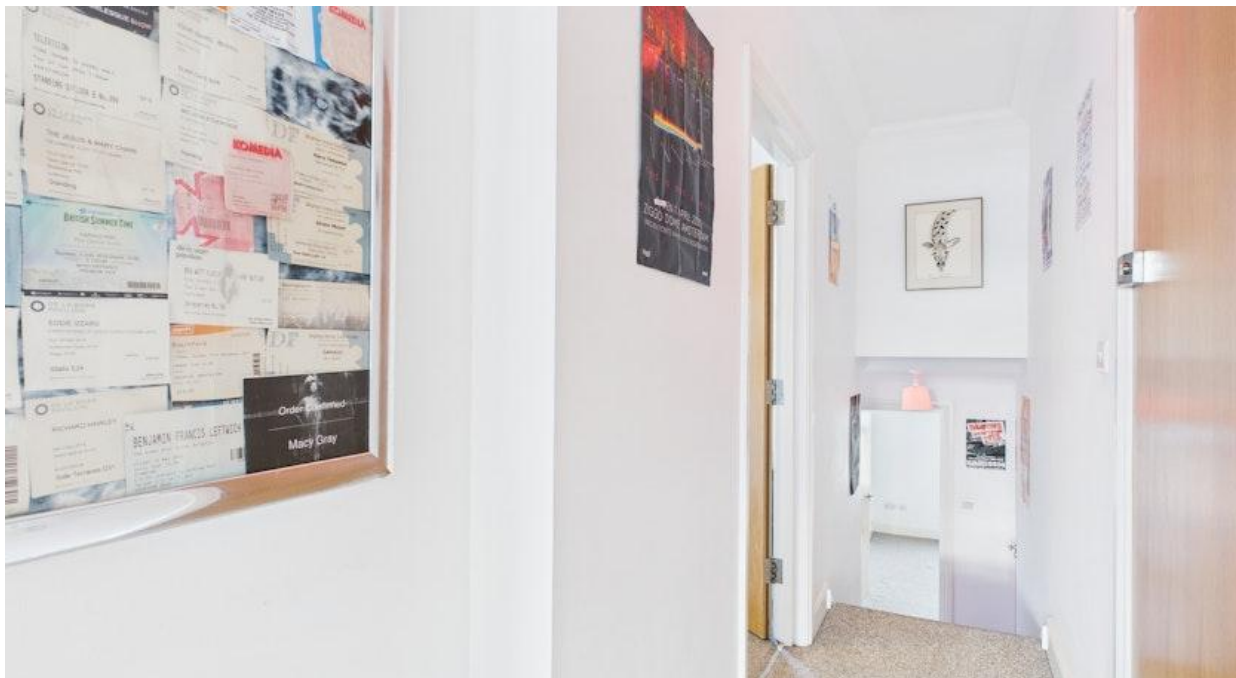
Northwood are delighted to welcome to market this lovely two-bedroom, second-floor apartment in the sought-after Little Chelsea area of Eastbourne.

Accommodation comprises: open-plan living room/kitchen, two double bedrooms and bathroom with shower over bath.

Further benefits include electric central heating, period features and neutral decor

Located in the ever-popular Little Chelsea, surrounded by boutique shops, cafés and local restaurants whilst being just a short walk from the town centre, mainline train station, theatres, cinema and Eastbourne's fabulous Victorian seafront.





Please view our immersive virtual tour to fully appreciate this fantastic property:
<https://tour.giraffe360.com/adbf0a8a7e4a779e628ca31289b7df>

Mobile Phone Coverage and Broadband speeds can be checked on the Ofcom website:
<https://checker.ofcom.org.uk/>

Council Tax Band B: £1970

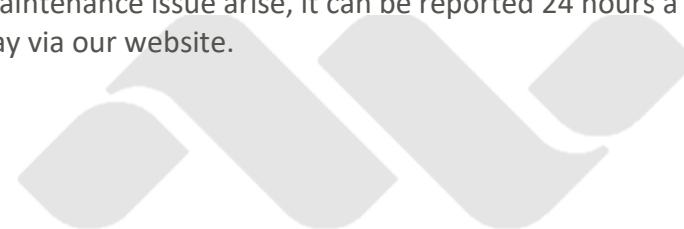
Holding Deposit: £265.00 (equivalent to one week's rent)

Full Deposit: £1325.00 (holding deposit + equivalent of four weeks' rent)

1st month's rent + Full Deposit: £2475.00

Total household income must exceed £34,500.00 to be considered for this property.

This property is managed by Northwood, should a maintenance issue arise, it can be reported 24 hours a day via our website.









Imagery ©2025 Google, Landsat / Copernicus, Airbus, Data SIO, NOAA, U.S. Navy, NGA, GEBCO Imagery ©2025 Airbus, Maxar



Northwood

81-83 South Street

Eastbourne

BN21 4LR

01323 744544

eastbourne@northwooduk.com