



Key Features

- Three-bedroom, mid-terraced house
- Popular Hampden Park location
- Newly Refurbished
- Private rear, Courtyard Garden
- Close to Hampden Park train station and shops
- EPC rating TBD

3  1  1 

Wilton Avenue, Hampden Park, Eastbourne

£1,300 PCM



Northwood are delighted to welcome to market this newly renovated, three-bedroom, mid-terraced house in the popular Hampden Park area of Eastbourne.

Accommodation comprises: porch, brand new fitted kitchen, lounge/diner, three bedrooms and brand new bathroom with shower.

Further benefits include gas central heating, front garden and private rear courtyard garden.





Located near Shinewater Nature Reserve, a short walk from Hampden Park Train Station and Hampden Park shops, this lovely family home has been completely refurbished and is perfect for small families.

Please view our immersive virtual tour to fully appreciate this fantastic property:
<https://tour.giraffe360.com/0254d03231824e86a7c9dc08c29723f>

Mobile Phone Coverage and Broadband speeds can be checked on the Ofcom website:
<https://checker.ofcom.org.uk/>

Council Tax Band B: £1970

Holding Deposit: £300.00 (equivalent to one week's rent)

Full Deposit: £1500.00 (holding deposit + equivalent of four weeks' rent)

1st month's rent + Full Deposit: £2800.00

Minimum Tenancy: 6 months

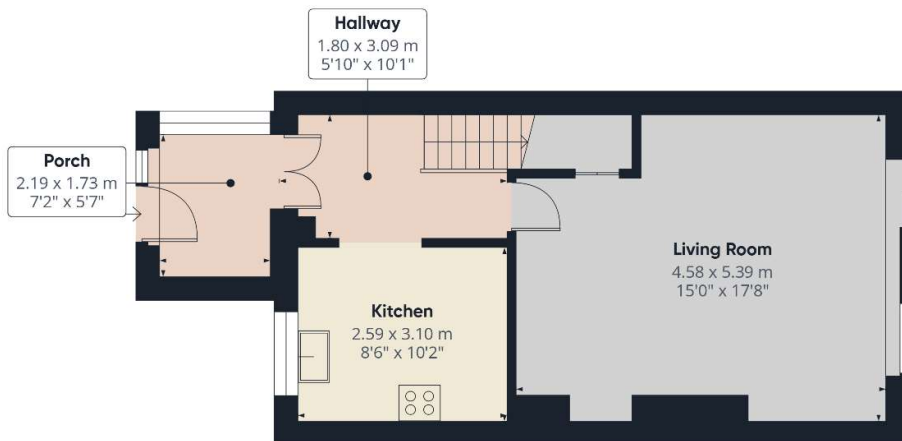
Total household income must exceed £39,000.00 to be considered for this property.

This property is managed by Northwood, should a maintenance issue arise, it can be reported 24 hours a day via our website.

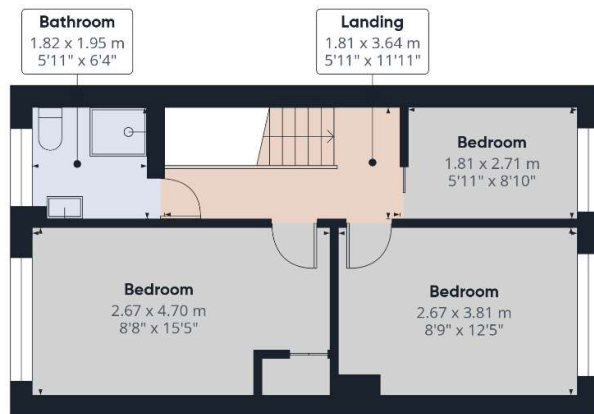








Floor 0



Floor 1

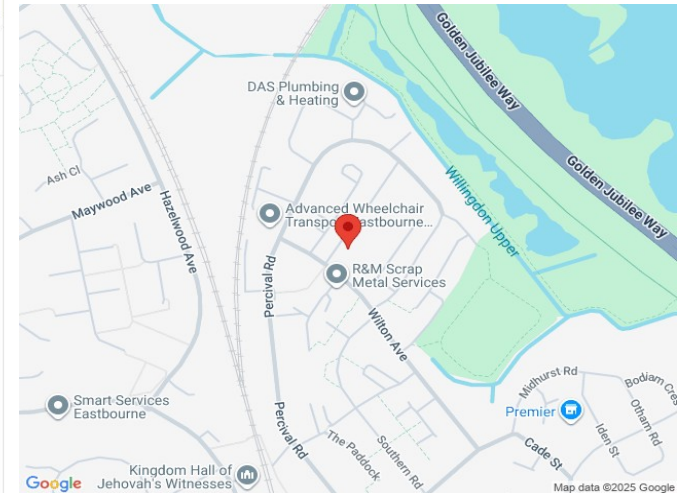


Approximate total area[®]
77.2 m²
831 ft²

(1) Excluding balconies and terraces

Calculations reference the RICS IPMS 3C standard. Measurements are approximate and not to scale. This floor plan is intended for illustration only.

GIRAFFE 360



Northwood

81-83 South Street

Eastbourne

BN21 4LR

01323 744544

eastbourne@northwooduk.com

