



## Key Features

- ◆ Three-bedroom, terraced house
- ◆ Two reception rooms
- ◆ Walking distance from town centre and seafront
- ◆ Adjacent to Bourne Primary School
- ◆ Perfect for families
- ◆ EPC rating C

3  2  1 

Melbourne Road, Eastbourne

£1,250 PCM



Northwood are delighted to welcome to market this lovely three-bedroom, terraced house adjacent to Bourne Primary School in Eastbourne.

Accommodation comprises: living room, dining room, kitchen, two double bedrooms, one single bedroom and bathroom with shower over bath.

Further benefits include private courtyard garden, double-glazing and gas central heating.

Located next to Bourne Primary School, just a short walk from the town centre, train station and seafront, this lovely family home is perfectly placed for families to make the most of life on the Sunshine Coast.







Please view our immersive virtual tour to fully appreciate this fantastic property:  
<https://tour.giraffe360.com/0723ffee960d4eebb875e57941879e5d>

Mobile Phone Coverage and Broadband speeds can be checked on the Ofcom website:  
<https://checker.ofcom.org.uk/>

Council Tax Band B: £1970

Holding Deposit: £285.00 (equivalent to one week's rent)

Full Deposit: £1440.00 (holding deposit + equivalent of four weeks' rent)

1st month's rent + Full Deposit: £2690.00

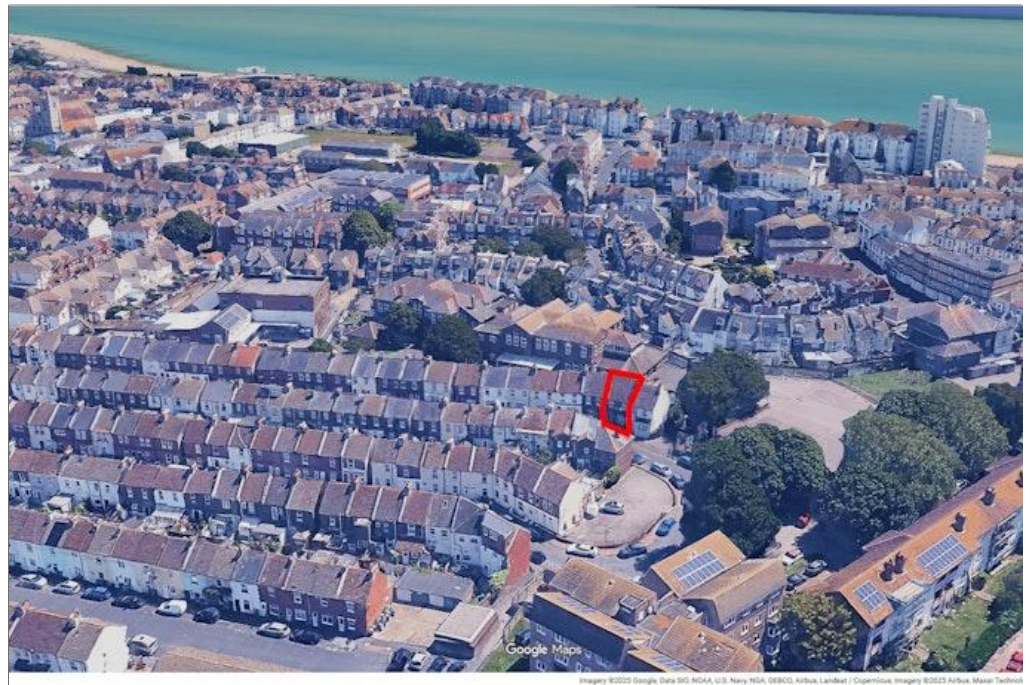
Minimum Tenancy: 6 months

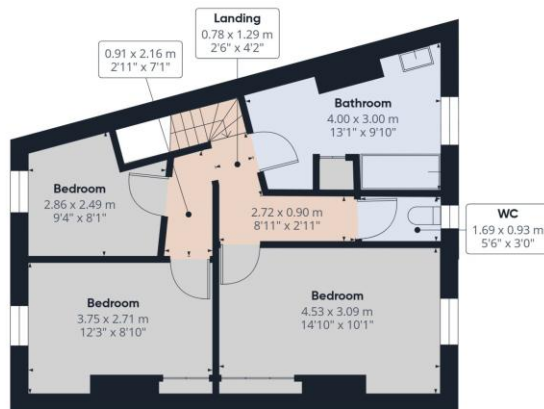
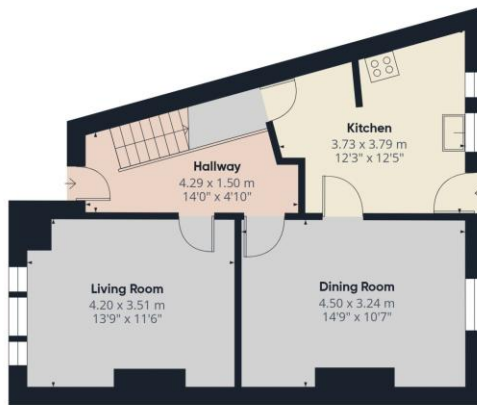
Total household income must exceed £37,500.00 to be considered for this property.

This property is managed by Northwood, should a maintenance issue arise, it can be reported 24 hours a day via our website.









**northwood**  
Local knowledge, national reach

Approximate total area\*\*  
93 m<sup>2</sup>  
1002 ft<sup>2</sup>

(1) Excluding balconies and terraces

Calculations reference the RICS IPMS 3C standard. Measurements are approximate and not to scale. This floor plan is intended for illustration only.

GIRAFFE360



SEE MORE ONLINE

**Northwood**

81-83 South Street

Eastbourne

BN21 4LR

01323 744544

eastbourne@northwooduk.com

**northwood**  
Local knowledge, national reach