



Langney Road , Eastbourne

£650 PCM

Key Features

- ◆ Ground Floor, Studio Flat
- ◆ Just off Eastbourne Town Centre
- ◆ Walking distance from train station and seafront
- ◆ Level access
- ◆ Secure entry phone
- ◆ EPC rating E

1  0  1 


northwood
Local knowledge, national reach



Northwood are delighted to welcome to market this good-sized, ground-floor, studio-apartment just off Eastbourne town centre.

Accommodation comprises: studio room with built-in wardrobe, fitted kitchen and bathroom. A shower is currently being fitted to this property.

Further benefits include electric heaters, double-glazing, secure entry-phone and parking.

Located just off Eastbourne town centre, walking distance from the train station and seafront.

Please view our immersive virtual tour to fully appreciate this fantastic property:

<https://tour.giraffe360.com/dcb957772f1644178fcfa3a5e5471eeb>

Mobile Phone Coverage and Broadband speeds can be checked on the Ofcom website:

<https://checker.ofcom.org.uk/>





Council Tax Band A: £1688

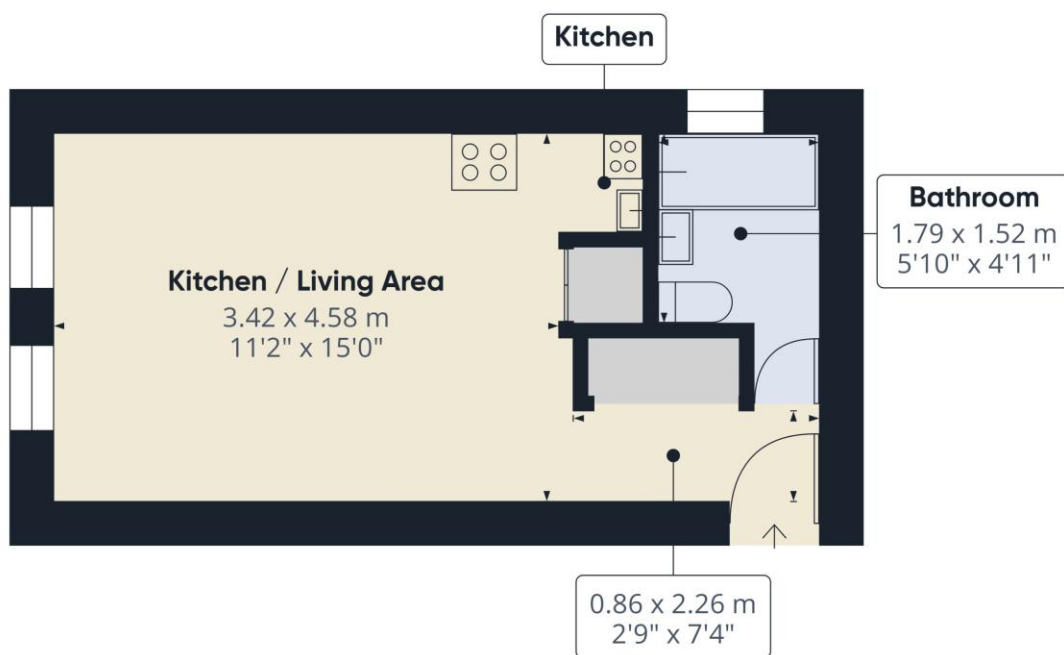
Holding Deposit: £150.00 (equivalent to one week's rent)

Full Deposit: £750.00 (holding deposit + equivalent of four weeks' rent)

1st month's rent + Full Deposit: £1400.00

Total household income must exceed £19,500.00 to be considered for this property.

This property is managed by Northwood, should a maintenance issue arise, it can be reported 24 hours a day via our website.

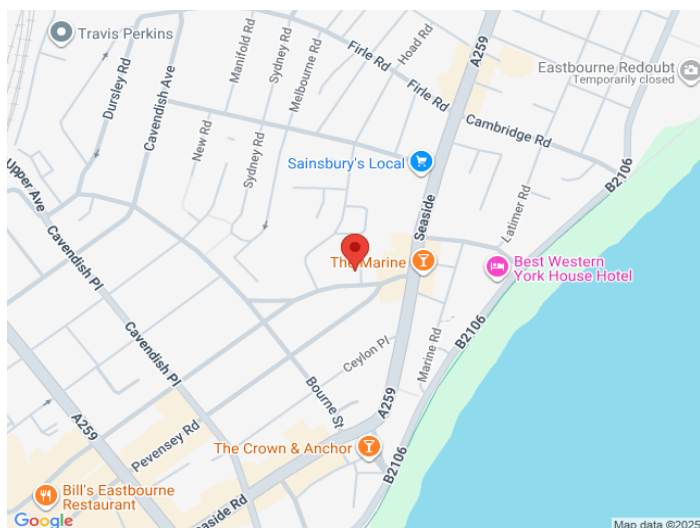


Approximate total area⁽¹⁾
23.2 m²
250 ft²

(1) Excluding balconies and terraces

Calculations reference the RICS IPMS 3C standard. Measurements are approximate and not to scale. This floor plan is intended for illustration only.

GIRAFFE360



SEE MORE ONLINE

Northwood

81-83 South Street
Eastbourne
BN21 4LR
01323 744544
eastbourne@northwooduk.com