



Langney Road , Eastbourne

£700 PCM

## Key Features

- ◆ Ground Floor, Studio Flat
- ◆ Just off Eastbourne Town Centre
- ◆ Walking distance from train station and seafront
- ◆ Level access
- ◆ Secure entry phone
- ◆ EPC rating E

1  0  1 

  
**northwood**  
Local knowledge, national reach



Northwood are delighted to welcome to market this good-sized, ground-floor, studio-apartment just off Eastbourne town centre.

Accommodation comprises: studio room with built-in wardrobe, fitted kitchen and bathroom. A shower is currently being fitted to this property.

Further benefits include electric heaters, double-glazing, secure entry-phone and parking.

Located just off Eastbourne town centre, walking distance from the train station and seafront.

Please view our immersive virtual tour to fully appreciate this fantastic property:

<https://tour.giraffe360.com/dcb957772f1644178fcfa3a5e5471eeb>

Mobile Phone Coverage and Broadband speeds can be checked on the Ofcom website:

<https://checker.ofcom.org.uk/>







---

Council Tax Band A: £1688

Holding Deposit: £160.00 (equivalent to one week's rent)

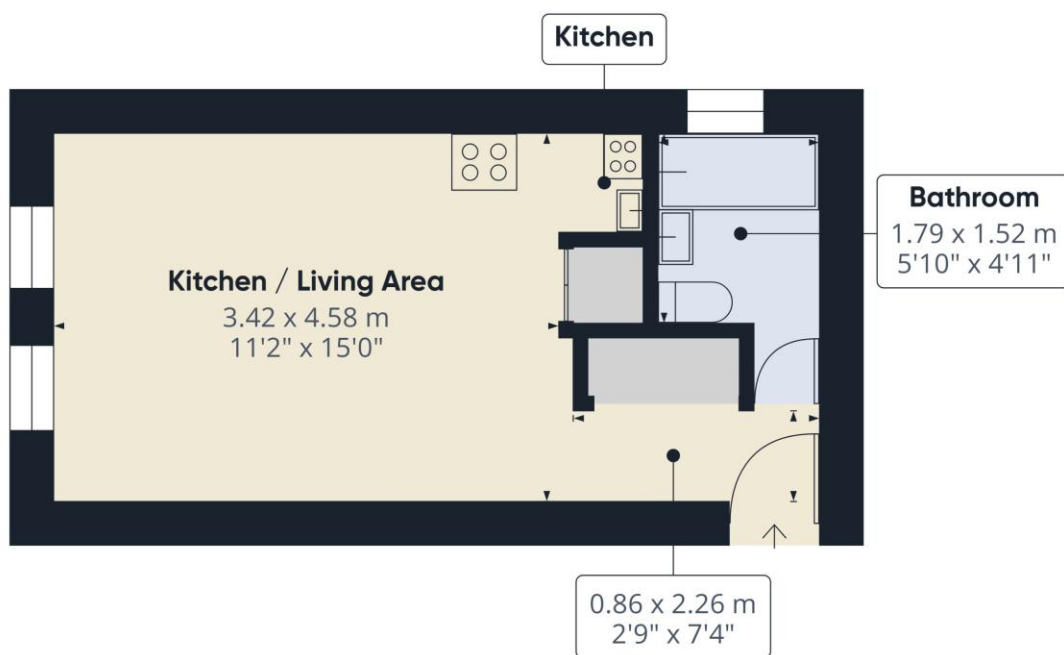
Full Deposit: £805.00 (holding deposit + equivalent of four weeks' rent)

1st month's rent + Full Deposit: £1505.00

Minimum Tenancy: 6 months

Total household income must exceed £21,000.00 to be considered for this property.

This property is managed by Northwood, should a maintenance issue arise, it can be reported 24 hours a day via our website.

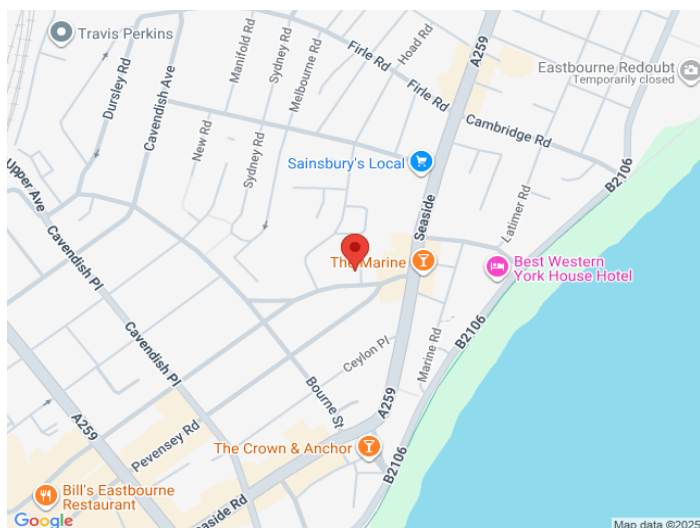


Approximate total area<sup>(1)</sup>  
23.2 m<sup>2</sup>  
250 ft<sup>2</sup>

(1) Excluding balconies and terraces

Calculations reference the RICS IPMS 3C standard. Measurements are approximate and not to scale. This floor plan is intended for illustration only.

GIRAFFE360



SEE MORE ONLINE

## Northwood

81-83 South Street  
Eastbourne  
BN21 4LR  
01323 744544  
eastbourne@northwooduk.com