



Key Features

- ◆ One bedroom, first-floor apartment
- ◆ Located in a beautifully converted hall
- ◆ Open plan living
- ◆ Refurbished to a high standard
- ◆ Close to seafront, shops and amenities
- ◆ EPC rating C



5-6 Beamsley Road, Redoubt, Eastbourne

£825 PCM



A UK HOMEOWNER GUARANTOR IS REQUIRED FOR THIS PROPERTY.

Northwood are delighted to welcome to market this generous one-bedroom apartment in a converted community hall in the Redoubt area of Eastbourne.

Accommodation comprises bright open-plan living room/kitchen/diner, double-bedroom with built-in wardrobes and modern white-suite bathroom with shower over bath.

Further benefits include double-glazing, generous storage space and free on street parking.





Located just off Eastbourne's fabulous Victorian seafront, minutes walk from the Napoleonic Redoubt fortress, seafront cafes as well as local shops and amenities this beautiful apartment is perfectly located to make the most of life on the Sunshine coast.

Please view our immersive virtual tour to fully appreciate this fantastic property:
<https://tour.giraffe360.com/e7e3b94cb4424f898f6076b453444619/>

Mobile Phone Coverage and Broadband speeds can be checked on the Ofcom website:
<https://checker.ofcom.org.uk/>

Council Tax Band A: £1688

Holding Deposit: £190.00 (one week's rent)

Full Deposit: £950.00

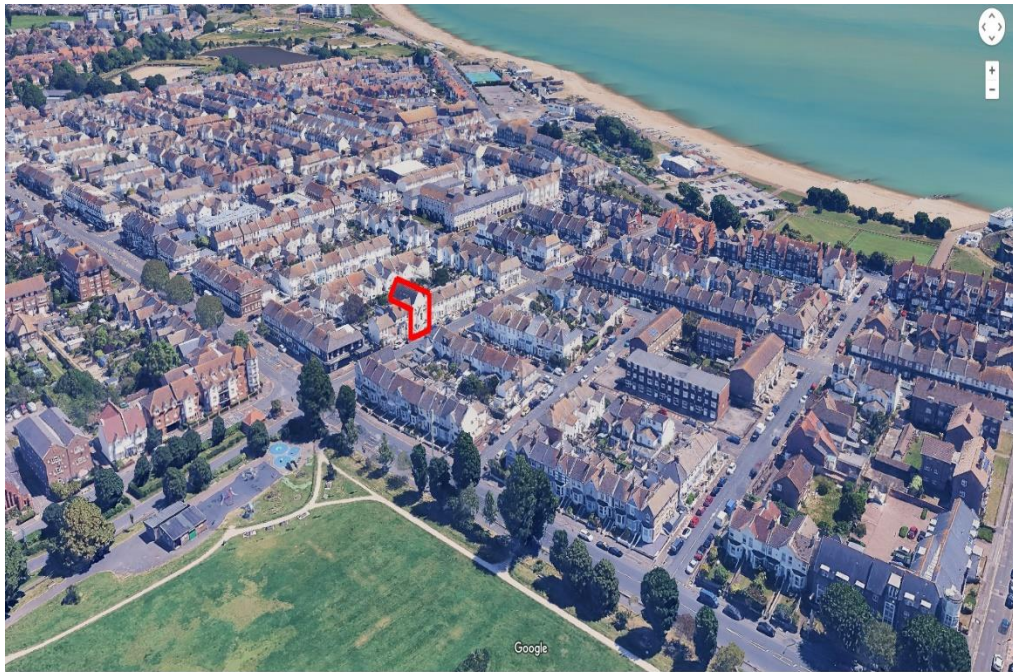
1st month's rent + Full Deposit: £1775.00

Minimum Tenancy: 6 months

Total household income must exceed £24,750.00 to be considered for this property.

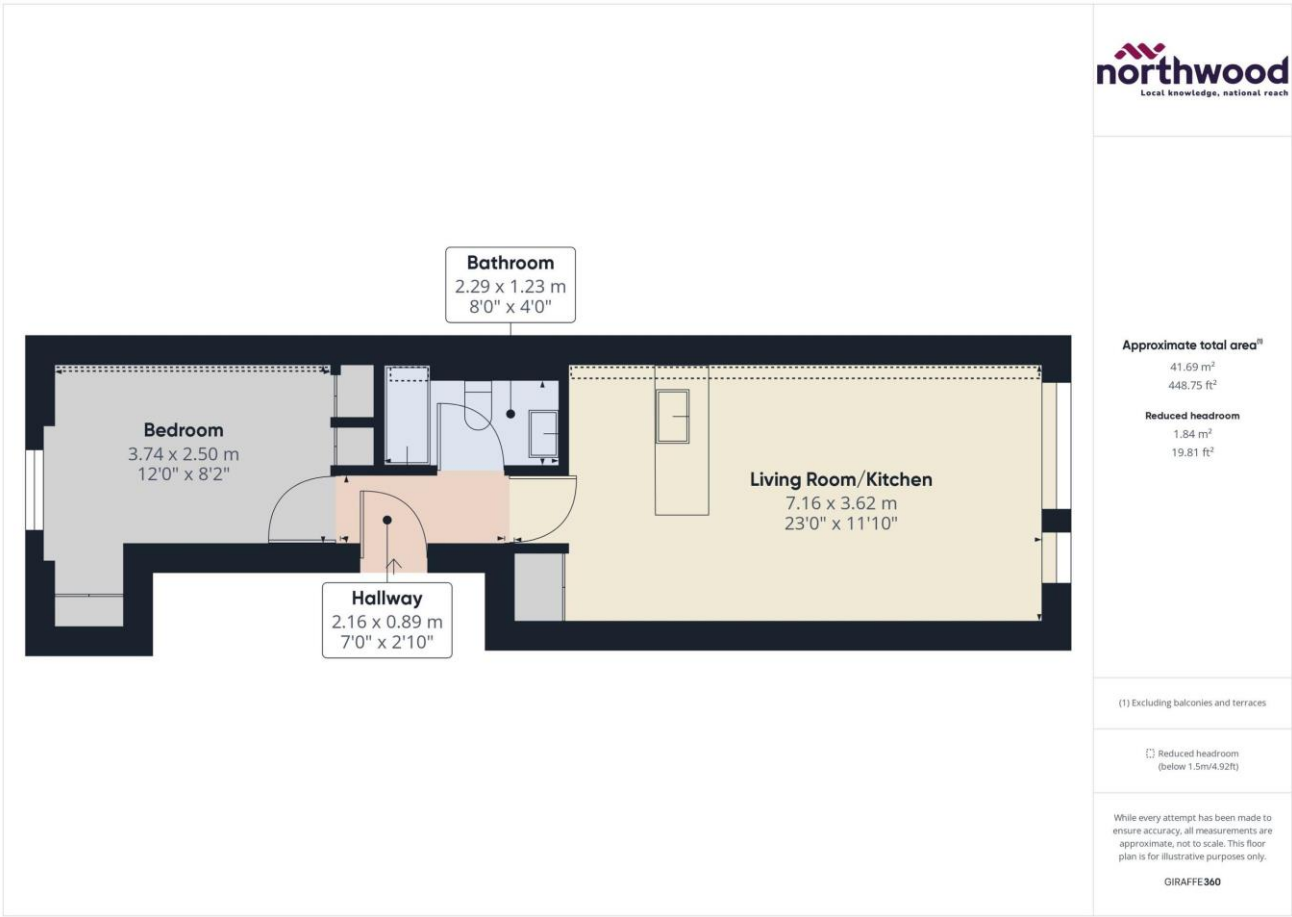
The landlord manages this property directly.





Imagery ©2025 Google, Data SIO, NOAA, U.S. Navy, NGA, GEBCO, Airbus, Airbus, Airbus, Map data ©2025, 2024





Northwood

81-83 South Street
Eastbourne
BN21 4LR
01323 744544
eastbourne@northwooduk.com

