



Tower Road, Brighton

£945 PCM

Key Features

- ◆ First floor studio apartment
- ◆ Popular Queens Park location
- ◆ Walking distance from shops and seafront
- ◆ Directly adjacent to Queens Park
- ◆ Secure entry phone
- ◆ EPC rating E

1  0  1 


northwood
Local knowledge, national reach



Northwood are delighted to welcome to market this first-floor studio apartment in the Queens Park area of Brighton.

Accommodation comprises: large studio, fitted kitchen with appliances and bathroom with electric shower over bath.

Further benefits include built-in wardrobes, double-glazing and secure entry-phone.

Situated on the first floor of a purpose built block next to the Pepper Pot with views towards Queens Park, this spacious studio is only a few minutes walk from the seafront and the local shops and amenities of Kemp Town.

Please view our immersive virtual tour to fully appreciate this fantastic property:

<https://tour.giraffe360.com/d3d2d747d0f2414fa1e3160323f688b1/>

Mobile Phone Coverage and Broadband speeds can be checked on the Ofcom website:

<https://checker.ofcom.org.uk/>





Council Tax Band A: £1638

Holding Deposit: £215.00 (one week's rent)

Full Deposit: £1090.00

1st month's rent + Full Deposit: £2035.00

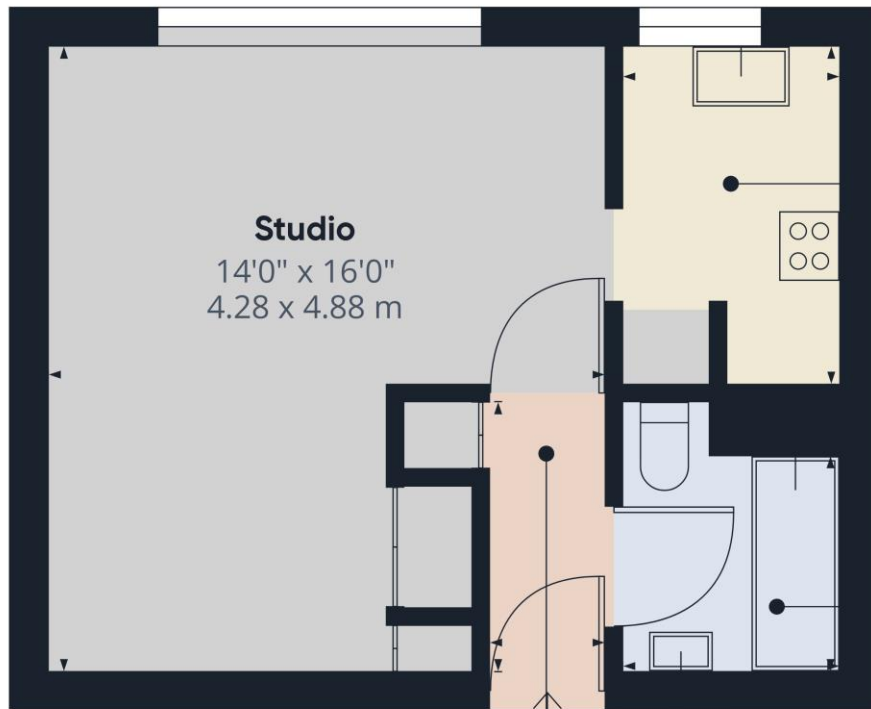
Minimum Tenancy: 6 months

Total household income must exceed £28,350.00 to be considered for this property.

This property is managed by Northwood. Should a maintenance issue arise, it can be reported 24 hours a day via our website.





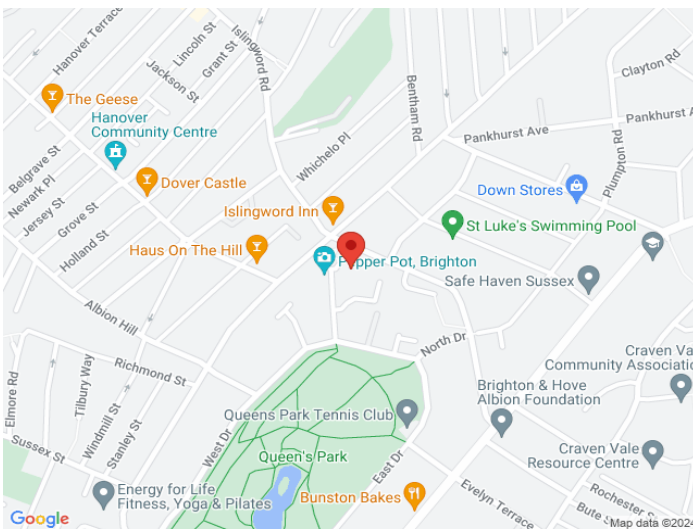


Approximate total area⁽¹⁾
308.98 ft²
28.71 m²

(1) Excluding balconies and terraces

While every attempt has been made to ensure accuracy, all measurements are approximate, not to scale. This floor plan is for illustrative purposes only.

GIRAFFE360



Northwood

81-83 South Street
Eastbourne
BN21 4LR
01323 744544
eastbourne@northwooduk.com