



Key Features

- ◆ One bedroom, ground floor apartment
- ◆ Sought-after Sovereign Harbour location
- ◆ Private parking space
- ◆ Close to shops, cafes and restaurants
- ◆ Walking distance from beach
- ◆ EPC rating D



Falmouth Close, Sovereign Harbour South, Eastbourne

£875 PCM



Northwood are delighted to welcome to market this lovely one bedroom, ground-floor apartment in the much sought after Sovereign Harbour South area of Eastbourne.

Accommodation comprises: living room, kitchen, double bedroom with built-in wardrobe and bathroom with shower over bath.

Further benefits include electric heating, uPVC double glazing, parking space and secure entry phone.





Close to the Waterfront restaurants, beach, The Haven primary school and the Sovereign Harbour Retail Park, viewing of this fantastic apartment is highly recommended.

PLEASE NOTE: THE PROPERTY BENEFITS FROM A NEW LIVING ROOM CARPET, FITTED SINCE THESE PHOTOS WERE TAKEN.

Sovereign Harbour is to the east of Eastbourne town centre. Formerly known as The Crumbles, this sought-after marina development opened in 1993 and consists of five separate harbours, a retail park and a mixture of permanent and holiday properties. Sovereign Harbour is Northern Europe's largest composite marina complex.

Please view our immersive virtual tour to fully appreciate this fantastic property:

<https://tour.giraffe360.com/e9666efc6ed34e97bb9c32248877f289/>

Mobile Phone Coverage and Broadband speeds can be checked on the Ofcom website:

<https://checker.ofcom.org.uk/>

Council Tax Band B: £1879

Holding Deposit: £200.00 (one week's rent)

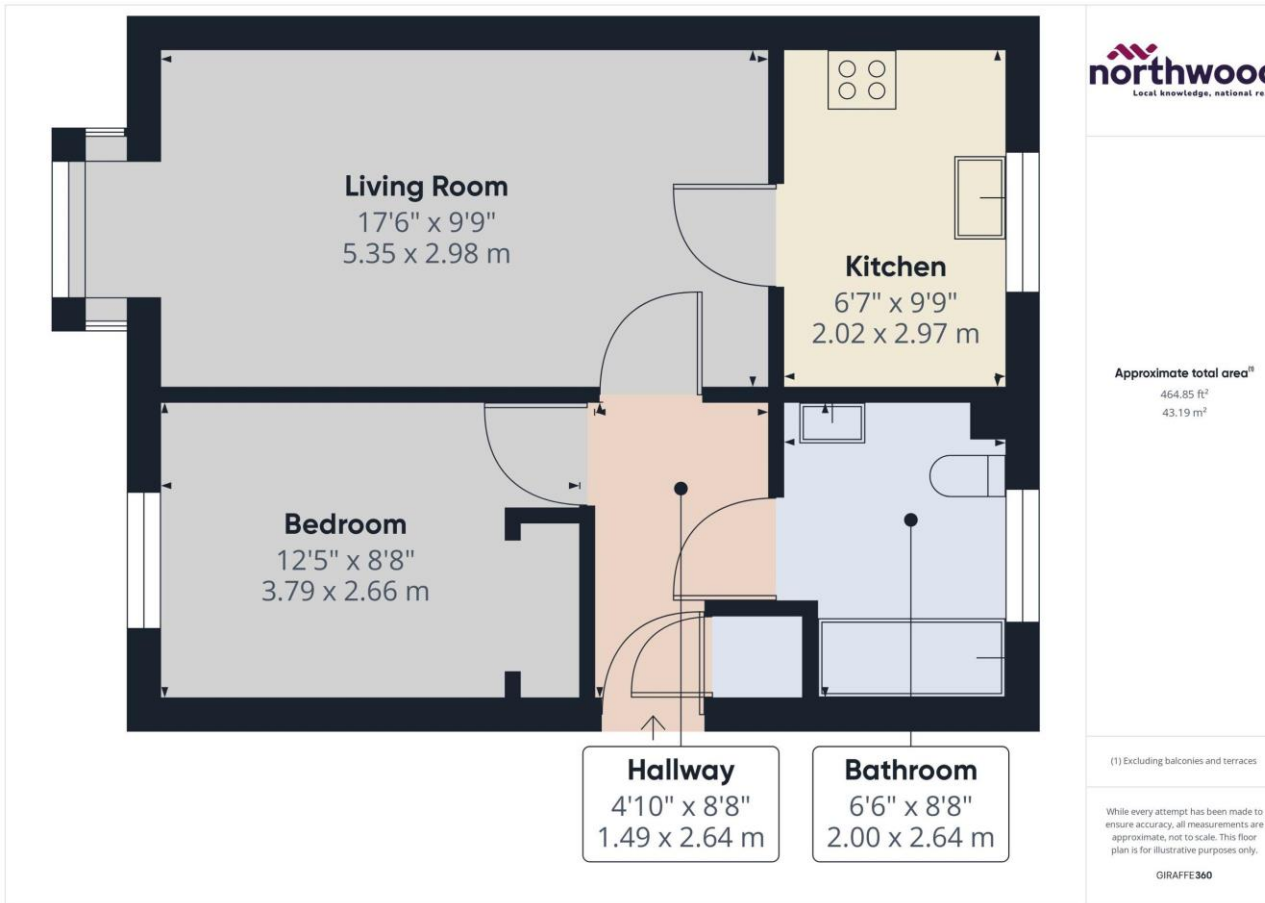
Full Deposit: £1005.00

1st month's rent + Full Deposit: £1880.00

Minimum Tenancy: 6 months







Northwood

81-83 South Street

Eastbourne

BN21 4LR

01323 744544

eastbourne@northwooduk.com