



Biddenden Close, Langney Rise, Eastbourne

£750 PCM

Key Features

- ◆ One-bedroom, second-floor flat
- ◆ Located in Langney Rise
- ◆ Built-in storage and outdoor storage unit
- ◆ Balcony
- ◆ Free on street parking
- ◆ EPC rating C

1  1  1 


northwood
Local knowledge, national reach



Northwood are delighted to welcome to market this one-bedroom, second-floor flat in Langney Rise, Eastbourne

Accommodation comprises: good-sized lounge, fitted kitchen, large double bedroom and bathroom with shower over bath

Further benefits include plenty of parking, private balcony as well as shared balcony for laundry, ample built-in storage, double-glazing, secure entry-phone and outdoor storage unit.

Located in the popular Langney Rise area of Eastbourne, near to West Langney Lake, this generous second-floor apartment is a short walk from local shops and just a few minutes further from Langney Shopping Centre, supermarkets and amenities.

Please view our immersive virtual tour to fully appreciate this fantastic property:

<https://tour.giraffe360.com/f0fa5f304f42472b83eefed883a0a053/>





Mobile Phone Coverage and Broadband speeds can be checked on the Ofcom website:
<https://checker.ofcom.org.uk/>

Council Tax Band A: £1611

Holding Deposit: £170.00 (one week's rent)

Full Deposit: £865.00

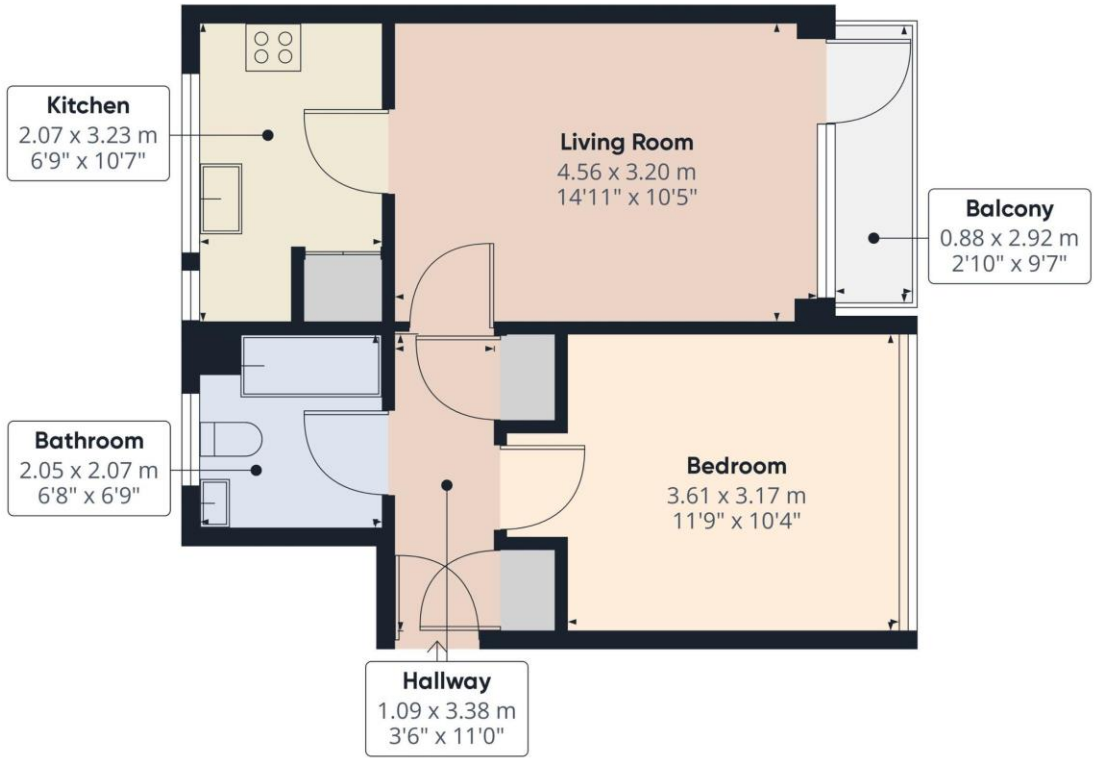
1st month's rent + Full Deposit: £1665.00

Minimum Tenancy: 6 months

Total household income must exceed £22,500.00 to be considered for this property.







Approximate total area⁽¹⁾
42.92 m²
462.02 ft²

(1) Excluding balconies and terraces

While every attempt has been made to ensure accuracy, all measurements are approximate, not to scale. This floor plan is for illustrative purposes only.

GIRAFFE360



Northwood

81-83 South Street
Eastbourne
BN21 4LR
01323 744544
eastbourne@northwooduk.com