



Key Features

- ◆ Two-bedroom, top floor apartment
- ◆ Sought-after Upperton location
- ◆ Private parking space
- ◆ Light filled living spaces
- ◆ Neutral décor
- ◆ EPC rating C



Eversfield Road, Eastbourne

£1100 PCM



Northwood are delighted to welcome to market this fantastic two-bedroom, top-floor, split-level apartment in Upperton, Eastbourne.

Accommodation comprises: good-sized lounge, large fitted kitchen with appliances, two double bedrooms and bathroom with shower over bath.

Further benefits include private parking space, double-glazing and secure entry-phone.





Located in the sought after Upperton area of Eastbourne, just a short walk from the town centre and train station as well as local parks and amenities, this quirky, light-filled apartment is perfectly situated to make the most of life on the Sunshine Coast.

Please view our immersive virtual tour to fully appreciate this fantastic property:
<https://tour.giraffe360.com/6511d39fd59e450e852609a181008fdf/>

Council Tax Band B: £1879

Holding Deposit: £250.00 (one week's rent)

Full Deposit: £1265.00

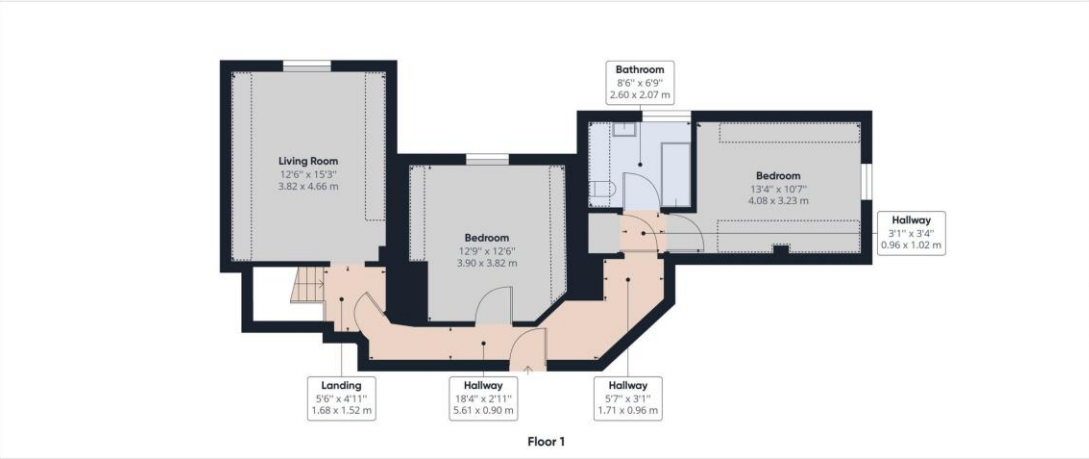
1st month's rent + Full Deposit: £2365.00

Minimum Tenancy: 6 months

Total household income must exceed £33,000 to be considered for this property.







Approximate total area⁽¹⁾
 866.44 ft²
 80.49 m²

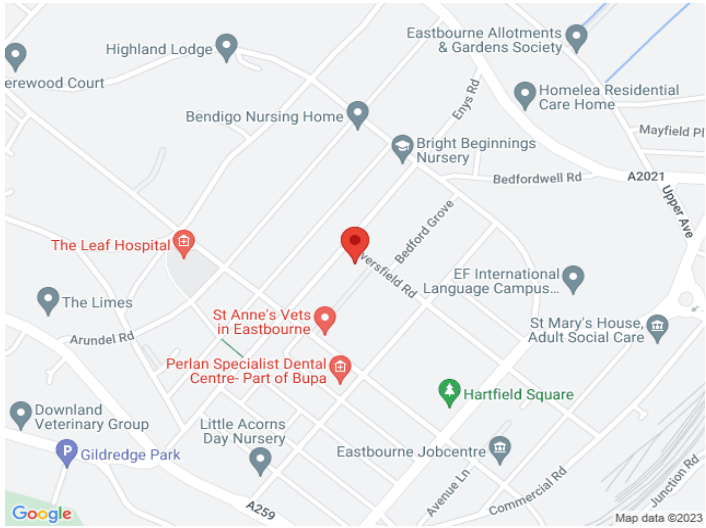
Reduced headroom
 120.95 ft²
 11.24 m²

(1) Excluding balconies and terraces

[] Reduced headroom
 (below 1.5m/4.92ft)

While every attempt has been made to ensure accuracy, all measurements are approximate, not to scale. This floor plan is for illustrative purposes only.

GIRAFFE 360



Northwood
 81-83 South Street
 Eastbourne
 BN21 4LR
 01323 744544
 eastbourne@northwooduk.com

