



Hollington Park Road, St. Leonards-On-Sea

£720 PCM

Key Features

- ◆ One bedroom, ground-floor apartment
- ◆ Quiet, St Leonards-on-Sea location
- ◆ Use of garden
- ◆ Private entrance
- ◆ Conservatory
- ◆ EPC rating D

1  1  1 


Local knowledge, national reach



Northwood are delighted to offer to market this lovely, one-bedroom, ground-floor apartment in the leafy suburbs of St Leonards-on-Sea.

Accommodation comprises open-plan living room/kitchen with appliances, double bedroom, shower room and access to rear garden.

Further benefits include private entrance, conservatory, central heating and shared use of a portion of the rear garden.

Located a short drive from two train stations and the heart of St Leonards-on-Sea, this self-contained, ground-floor apartment is perfect for those looking to get away from it all.

Please view our immersive virtual tour to fully appreciate this fantastic property:

<https://tour.giraffe360.com/e206c8b7ab604d81a1602ec503c089f4/>





SINGLE OCCUPANCY ONLY

NO DEPOSIT

Council Tax Band A: £1552

Water and WiFi bills included

Minimum Tenancy: 6 months

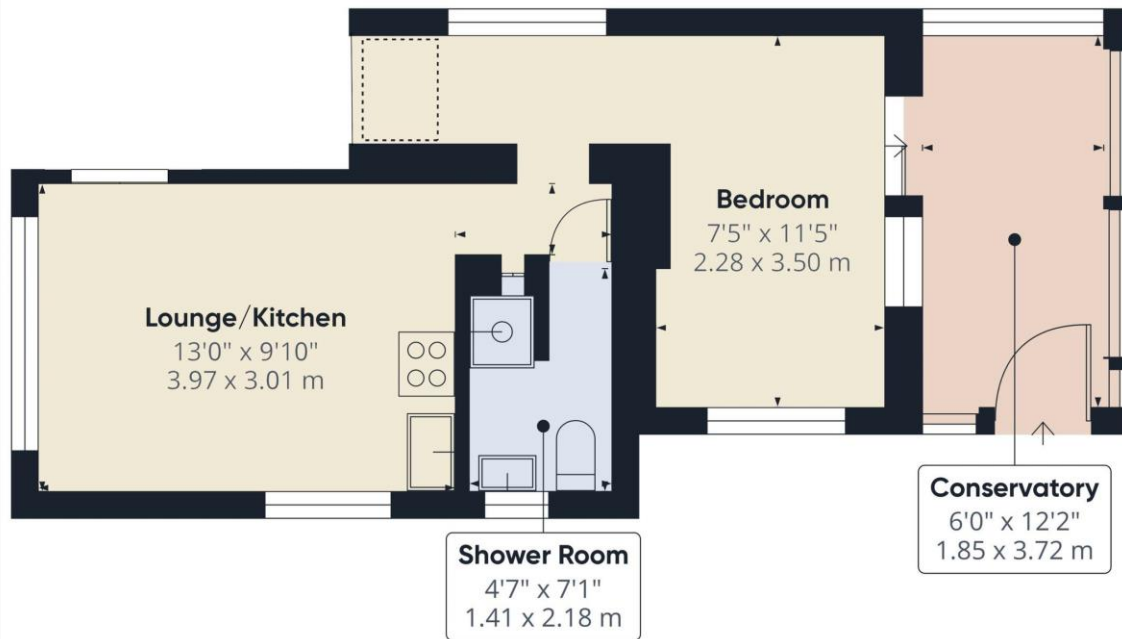
Total household income must exceed £21,600.00 to be considered for this property.

Mobile Phone Coverage and Broadband speeds can be checked on the Ofcom website:

<https://checker.ofcom.org.uk/>







Approximate total area¹
255.22 ft²
23.71 m²

Excluding balconies and terraces

While every attempt has been made to ensure accuracy, all measurements are approximate, not to scale. This floor plan is for illustrative purposes only.

GIRAFFE360



Northwood

81-83 South Street
Eastbourne
BN21 4LR
01323 744544
eastbourne@northwooduk.com