



ASPIRE

— TO MOVE —



Morris Road, Bath, BA2

An immaculately presented two double bedroom semi-detached home. The house is situated in the desirable location of Combe Down, in the very popular Mulberry Park development. Thoughtfully designed for modern living with neutral decor throughout. Available 22nd January 2026

Mulberry Park is a recent development in the Combe Down area of Bath. The area has good local amenities with a pub, co-op, hairdressers and other shops within 0.5 miles.

£1,550 PCM

Morris Road, Bath, BA2

- Two bedroom house
- Available 22nd January 2026
- 12 month initial contract
- Parking
- Unfurnished
- Council tax band C
- Garage
- Holding deposit: £357.00

An immaculately presented two double bedroom semi-detached home. The house is situated in the desirable location of Combe Down, in the very popular Mulberry Park development. Thoughtfully designed for modern living with neutral decor throughout. Available 22nd January 2026

Mulberry Park is a recent development in the Combe Down area of Bath. The area has good local amenities with a pub, co-op, hairdressers and other shops within 0.5 miles.

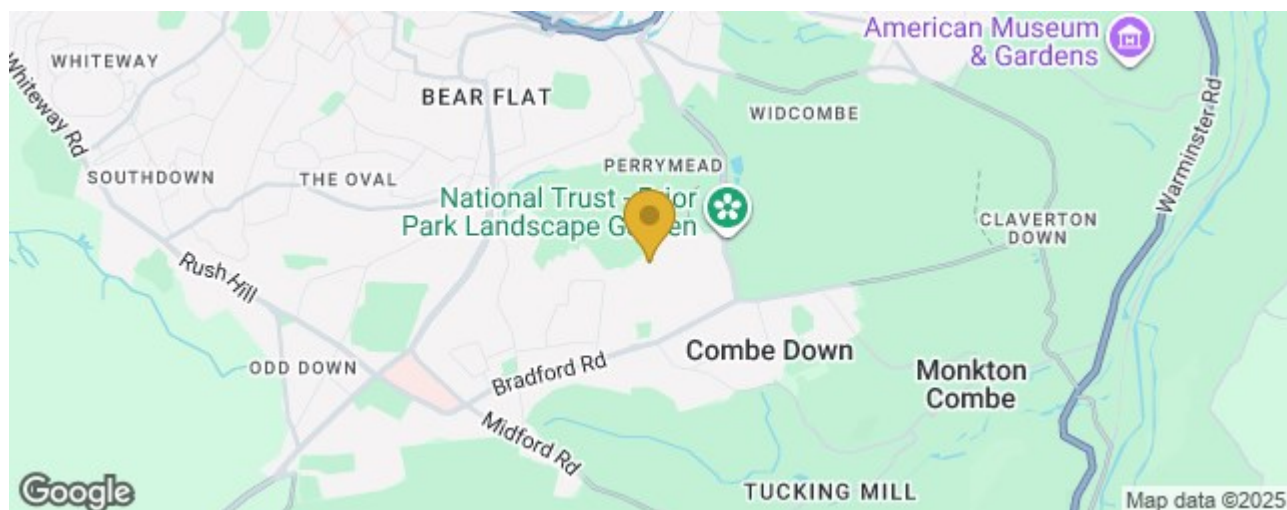
On the ground floor there is a modern fitted kitchen. with dining area. The kitchen has base and wall units, integrated fridge freezer, dishwasher, washer/dryer and a double oven and hob. Also on the ground floor you will also find a double bedroom and a bathroom with a shower over the bath.

The first floor is home to the master bedroom which has an en-suite shower room and a balcony with a table and chairs. In addition, there is a spacious living room with room for sofa, chair and TV.

The property also has a garage and parking outside the front of the house, there is a small courtyard to the rear, it is not accessible from the back of the house but from the side.

The property is offered unfurnished and is available from January 22nd 2026.

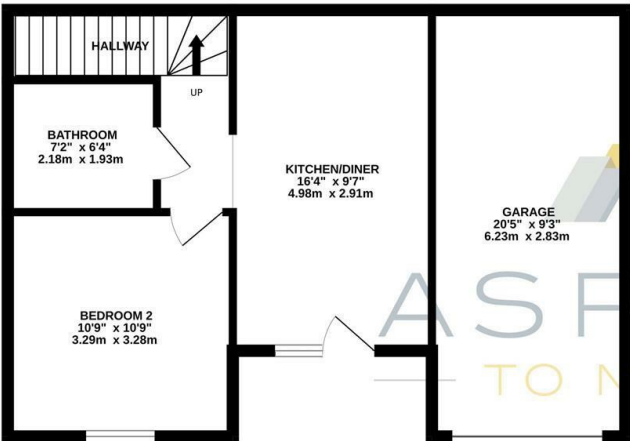
Council tax band C: £1,968.48



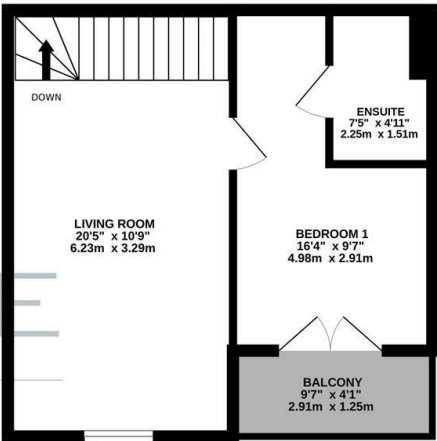


Floor Plan

GROUND FLOOR
566 sq.ft. (52.6 sq.m.) approx.



1ST FLOOR
374 sq.ft. (34.7 sq.m.) approx.



MORRIS ROAD, BATH, BA2

TOTAL FLOOR AREA : 940 sq.ft. (87.3 sq.m.) approx.
Whilst every attempt has been made to ensure the accuracy of the floorplan contained here, measurements of doors, windows, rooms and any other items are approximate and no responsibility is taken for any error, omission or mis-statement. This plan is for illustrative purposes only and should be used as such by any prospective purchaser. The services, systems and appliances shown have not been tested and no guarantee as to their operability or efficiency can be given.
Made with Metropix ©2024

These particulars, whilst believed to be accurate are set out as a general outline only for guidance and do not constitute any part of an offer or contract. Intending purchasers should not rely on them as statements of representation of fact, but must satisfy themselves by inspection or otherwise as to their accuracy. No person in this firms employment has the authority to make or give any representation or warranty in respect of the property.

