



ASPIRE  
TO MOVE

11 South View Road, Bath, BA2 3RW

£1,500 PCM



11 South View Road, Bath, BA2 3RW

**£1,500 PCM**

Aspire presents South View Terrace. A terraced two bedroom furnished property. This property is available now to professionals and students.

Downstairs benefits from a living room with L shape sofa, a dining room with table chairs. The kitchen has an oven, hob and washing machine along with plenty of storage. The bathroom is located downstairs, the bath has a new electric shower fitted over it.

The property benefits from a lean storage area and a small garden with back access. The garden is due to have some clearance and works completed to it before move in.

Upstairs the property benefits from two double bedrooms. At present only one has a double bed in it but the landlord upon request can fit another.

This property is best suited to, sharers/students or professionals. Please get in contact if you wish to book into view.



## Description

Oldfield Park - Oldfield Park is a popular location and close to Moorland Road shopping parade with its vast array of independent shops, cafes, takeaways and small supermarket. Oldfield Park further benefits from a doctors' surgery, dental practice, gym and badminton club. This location offers easy access to the city and Oldfield Park railway station (just 0.4 miles away) with its connection to Bristol Temple Meads and Bath Spa station. There are local schools nearby including Oldfield Park Junior School, Moorlands Infant School, Hayesfield Girls School and Beechen Cliff. The property is also close to university bus routes for Bath Spa University and Bath University.

## Situation

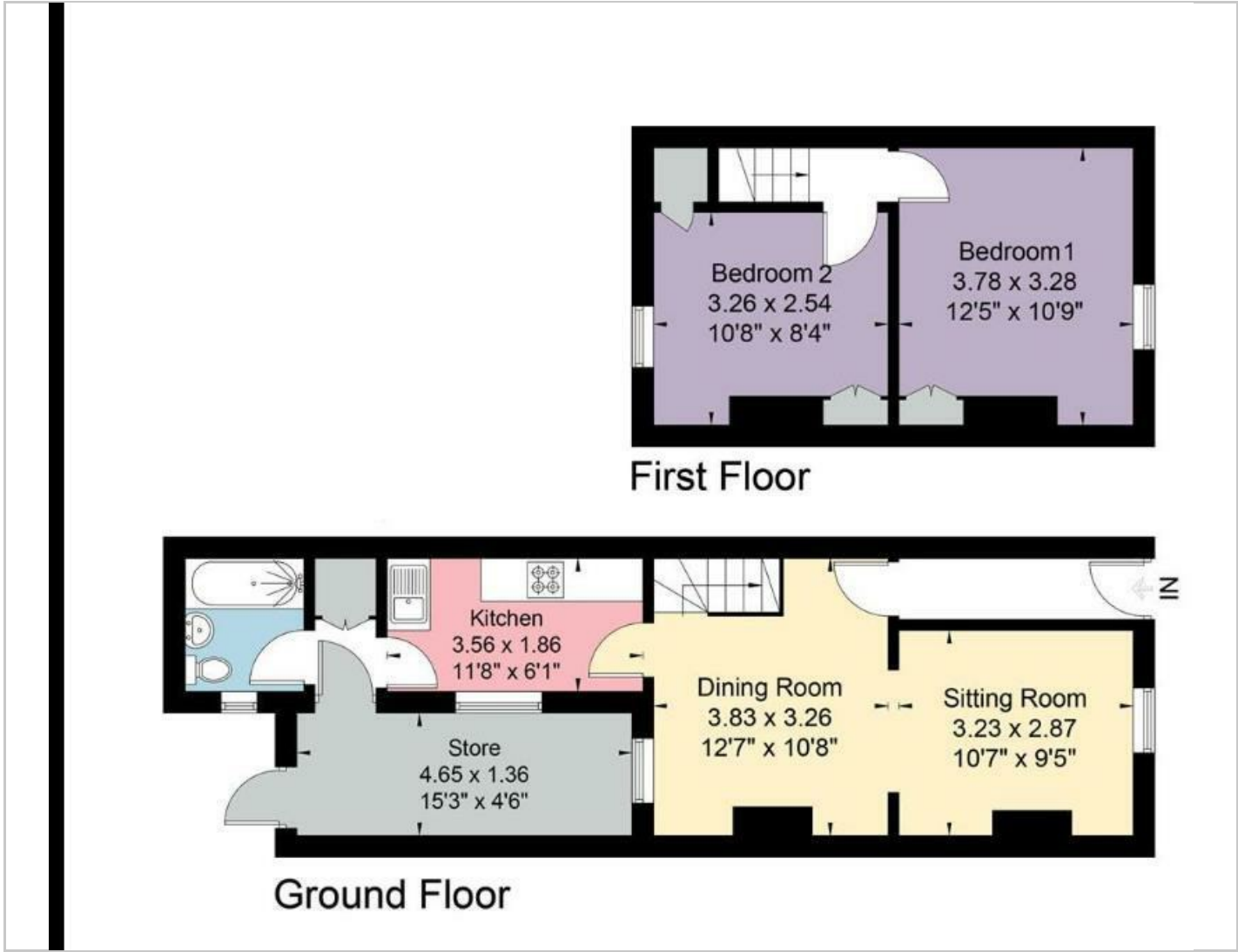


Furnished

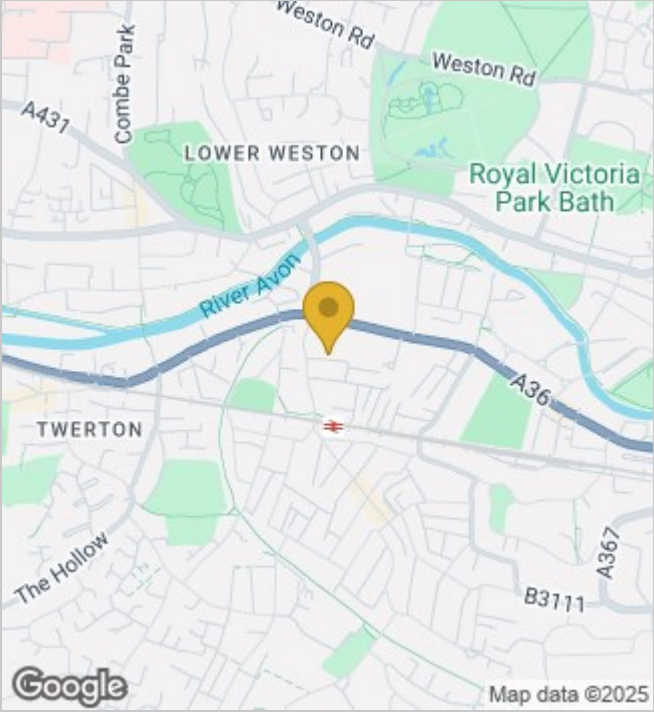
Council Tax Band: C

Available: 10th October 2025

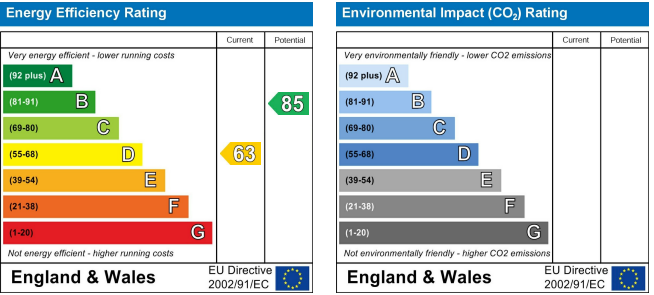
Floor Plans



Area Map



Energy Performance Graph



These particulars, whilst believed to be accurate are set out as a general outline only for guidance and do not constitute any part of an offer or contract. Intending purchasers should not rely on them as statements of representation of fact, but must satisfy themselves by inspection or otherwise as to their accuracy. No person in this firms employment has the authority to make or give any representation or warranty in respect of the property.