



# ASPIRE

— TO MOVE —



## St. Stephens Street, Bristol, BS1

Video viewing and physical viewings available on this property. Basement Studio flat located on St. Stephens Street. Available from the 18th July, offered furnished.

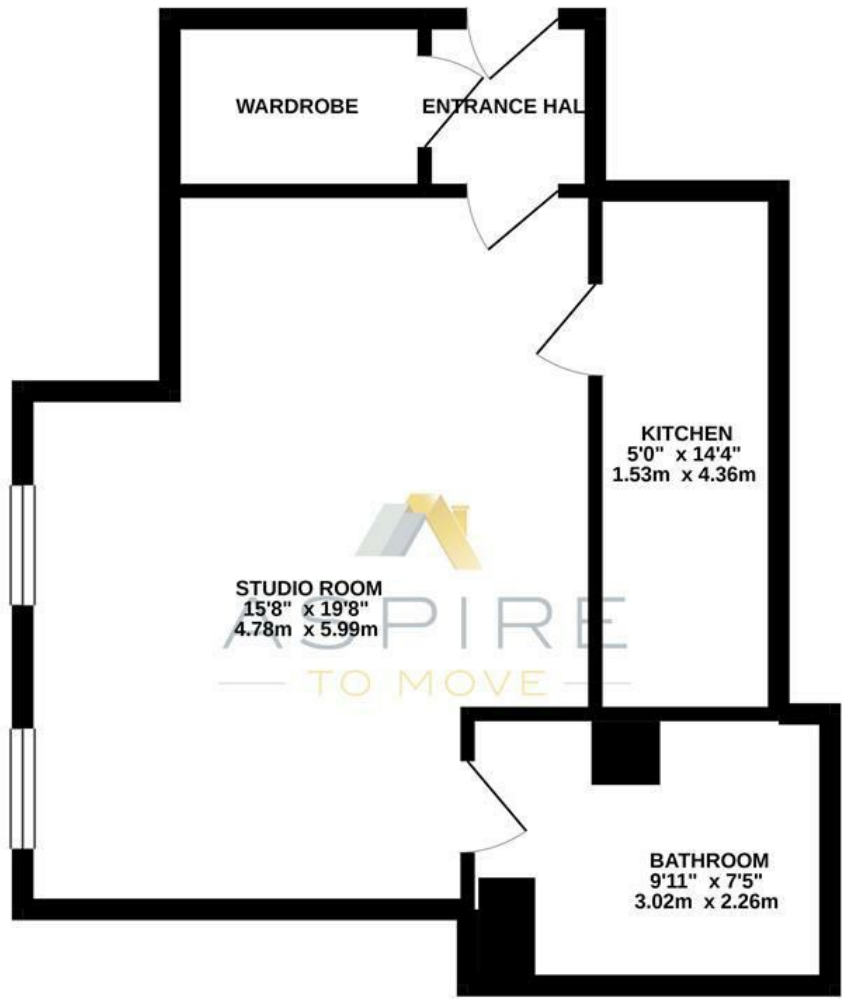
The property is located on St. Stephens Street in Bristol city centre. Local amenities can be found on Baldwin Street 50 metres away including banks, convenience stores, hairdressers and pubs. There is a bus stop on Baldwin Street 0.1 miles away.

- Studio flat with separate kitchen
- Furnished
- Available 18th July
- Single professional or couple
- City central location
- Council tax band A
- Students considered
- Holding deposit: £242
- 12 month initial contract

**£1,050 PCM**

Floor Plans

BASEMENT FLOOR  
460 sq.ft. (42.7 sq.m.) approx.



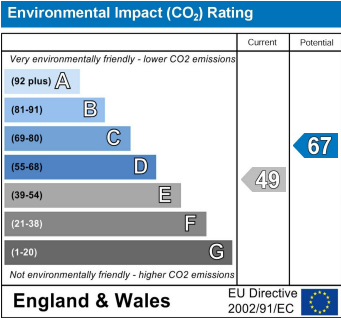
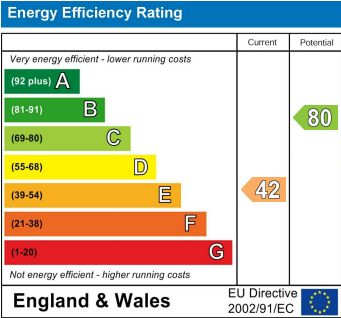
ST STEPHENS STREET, BRISTOL, BS1

TOTAL FLOOR AREA: 460 sq.ft. (42.7 sq.m.) approx.

Whilst every attempt has been made to ensure the accuracy of the floorplan contained here, measurements of doors, windows, rooms and any other items are approximate and no responsibility is taken for any error, omission or mis-statement. This plan is for illustrative purposes only and should be used as such by any prospective purchaser. The services, systems and appliances shown have not been tested and no guarantee as to their operability or efficiency can be given.

Made with Metropix ©2020

Energy Performance Graph



These particulars, whilst believed to be accurate are set out as a general outline only for guidance and do not constitute any part of an offer or contract. Intending purchasers should not rely on them as statements of representation of fact, but must satisfy themselves by inspection or otherwise as to their accuracy. No person in this firms employment has the authority to make or give any representation or warranty in respect of the property.