



ASPIRE

— TO MOVE —



Hanover Terrace, Bath, BA1

Video and physical viewings available. A handsome two bedroom end of terrace house located on Hanover Terrace, Bath. Available from the 20th June and offered part-furnished.

Hanover Terrace is located in the Camden area of Bath, North East of Bath city centre and 0.9 miles from Milsom Street. There are plenty of local amenities in the local area including a supermarket, shops and a few excellent pubs. Kensington Meadows is also just 0.3 miles away.

£1,650 PCM

Hanover Terrace, Bath, BA1

- Video viewing available
- Rear garden
- Steps leading up to front door
- Part-furnished
- Two bedroom, end of terrace house
- Side access
- Holding deposit: £380
- Available 20th June
- On street - permit parking
- Council tax band C

Video and physical viewings available. A handsome two bedroom end of terrace house located on Hanover Terrace, Bath. Available from the 20th June and offered part-furnished.

Hanover Terrace is located in the Camden area of Bath, North East of Bath city centre and 0.9 miles from Milsom Street. There are plenty of local amenities in the local area including a supermarket, shops and a few excellent pubs. Kensington Meadows is also just 0.3 miles away.

The property is raised up from road height and is accessed via a few steps. The property enjoys a prominent position in the street and parking is offered on street, permitted. On the ground floor the property is open plan with the kitchen, living and dining room all flowing into one. To the front there is a bay window and a dining room table chest of drawers and side board. The kitchen is to the rear and has base units, double oven, hob, fridge/freezer, washing machine and dishwasher. There are two cupboards which provide storage underneath the stairs.

Upstairs there are two double bedrooms. The master bedroom is to the front and enjoys lovely views towards Bath city centre. In this room a king sized bed is provided. At the rear of the property is the bathroom which benefits from having separate shower cubicle and free standing bath.

To the rear steps lead up to a raised garden area. The property benefits from side access and an outdoor tap.

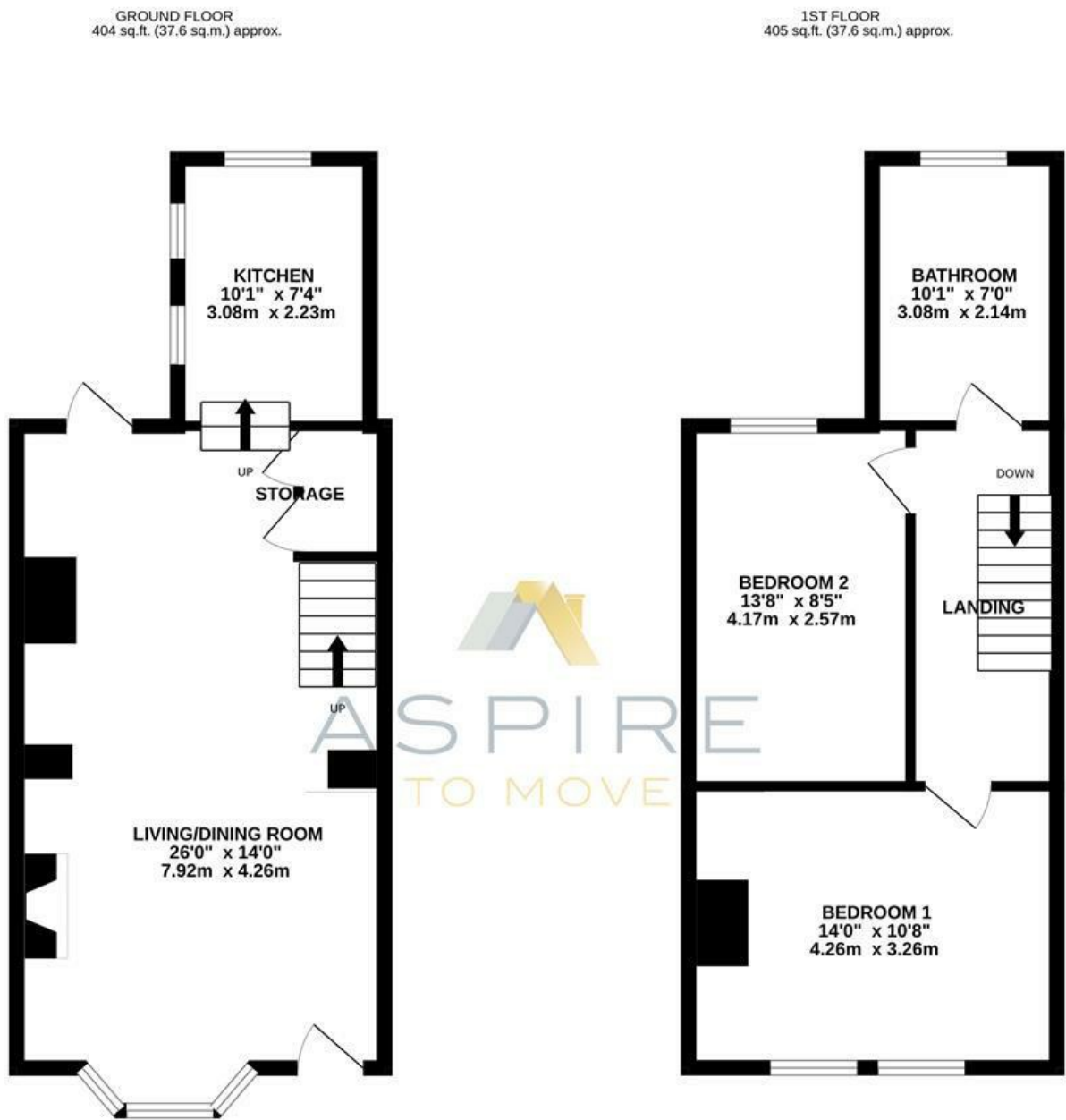
The property is offered part-furnished and available from the 20th June.

Council tax band C: £1968.48





Floor Plan



HANOVER TERRACE, BATH, BA1

TOTAL FLOOR AREA : 809 sq.ft. (75.2 sq.m.) approx.

Whilst every attempt has been made to ensure the accuracy of the floorplan contained here, measurements of doors, windows, rooms and any other items are approximate and no responsibility is taken for any error, omission or mis-statement. This plan is for illustrative purposes only and should be used as such by any prospective purchaser. The services, systems and appliances shown have not been tested and no guarantee as to their operability or efficiency can be given.

Made with Metropix ©2025

These particulars, whilst believed to be accurate are set out as a general outline only for guidance and do not constitute any part of an offer or contract. Intending purchasers should not rely on them as statements of representation of fact, but must satisfy themselves by inspection or otherwise as to their accuracy. No person in this firms employment has the authority to make or give any representation or warranty in respect of the property.

