



ASPIRE

— TO MOVE —



Day Crescent, Bath, BA2

Available July 2025, furnished. 8 Day Crescent is situated in the Twerton area, offering a balance of residential tranquility, accessibility to various amenities, transport links, and educational institutions.

Bath Spa University: Approximately 2.8 miles away, with direct bus services from Newton Park Library to Twerton Mill every 10 minutes, taking about 8 minutes

University of Bath: Around 4 miles from the property, accessible via bus or car.

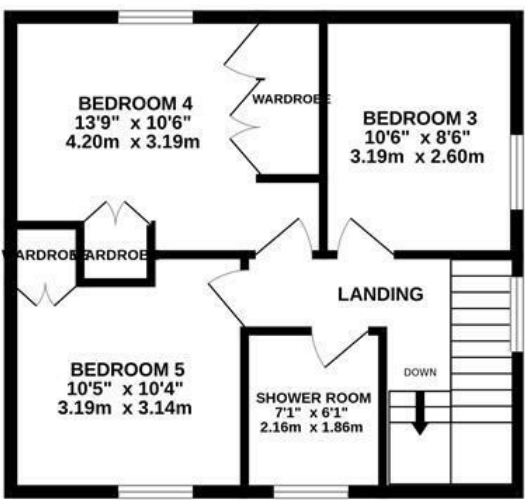
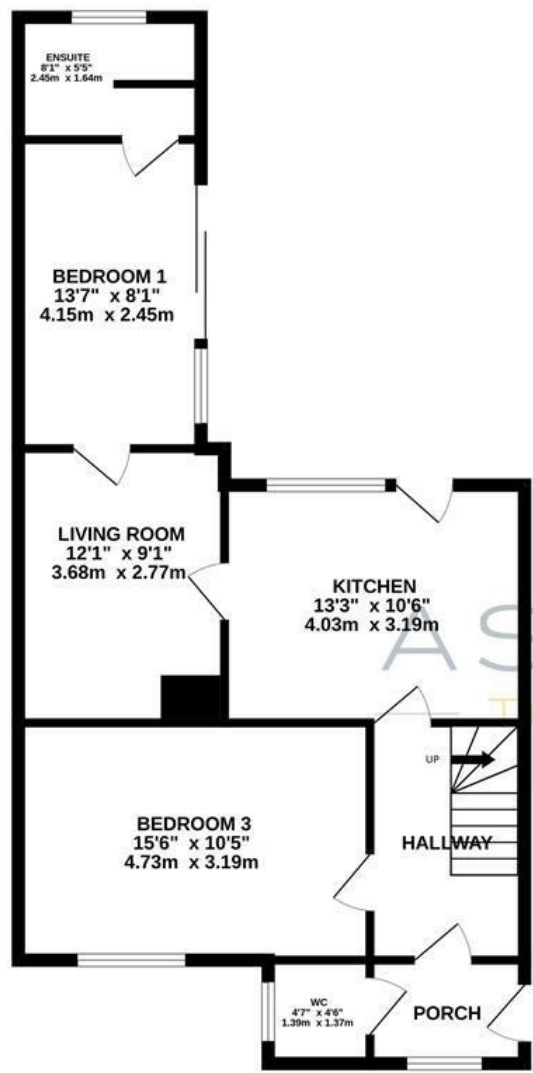
- 5 Bedroom House
- HMO - Available to students
- Available July 2025
- Furnished
- Holding deposit - one weeks worth of rent - £669.00

£2,900 PCM

Floor Plans

GROUND FLOOR
680 sq.ft. (63.2 sq.m.) approx.

1ST FLOOR
467 sq.ft. (43.4 sq.m.) approx.

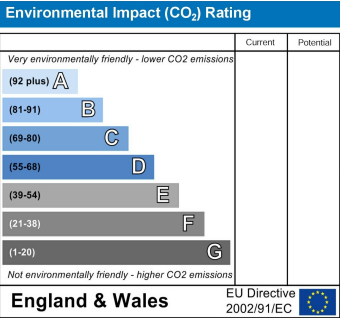
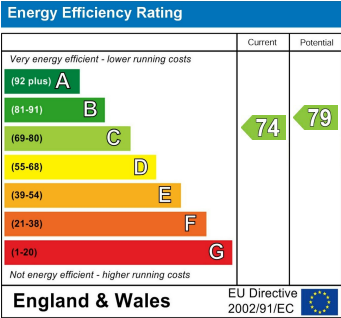


DAY CRESCENT, BATH, BA2

TOTAL FLOOR AREA : 1147 sq.ft. (106.6 sq.m.) approx.

Whilst every attempt has been made to ensure the accuracy of the floorplan contained here, measurements of doors, windows, rooms and any other items are approximate and no responsibility is taken for any error, omission or mis-statement. This plan is for illustrative purposes only and should be used as such by any prospective purchaser. The services, systems and appliances shown have not been tested and no guarantee as to their operability or efficiency can be given.
Made with Metropix ©2025

Energy Performance Graph



These particulars, whilst believed to be accurate are set out as a general outline only for guidance and do not constitute any part of an offer or contract. Intending purchasers should not rely on them as statements of representation of fact, but must satisfy themselves by inspection or otherwise as to their accuracy. No person in this firm's employment has the authority to make or give any representation or warranty in respect of the property.