



ASPIRE

— TO MOVE —



Foxcombe Road, Bath, BA1

Video and physical viewings available. Located in Newbridge we are pleased to offer this 2 bedroom unfurnished maisonette. Available 7th June.

Foxcombe Road is ideally located just 0.1 mile away from Chelsea Road which has many amenities and shops. The A4 Bath Road is located just 0.15 miles away where you can catch the bus into the city centre located 1.2 miles away. The apartment would suit a professional couple. The landlord will not accept smoking, pets, students or children.

£1,375 PCM

Foxcombe Road, Bath, BA1

- Two bedroom Maisonette
- Close to the RUH
- Video viewing available
- Two double bedrooms
- Popular location
- Council tax band C
- Unfurnished
- Available 7th June
- Holding deposit: £317

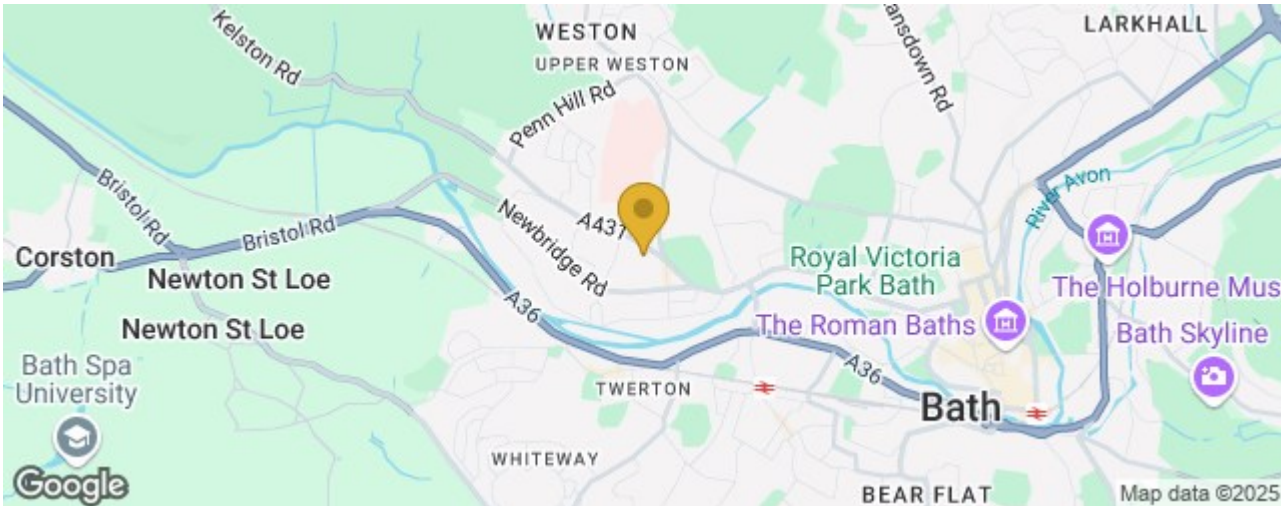
Video and physical viewings available. Located in Newbridge we are pleased to offer this 2 bedroom unfurnished maisonette. Available 7th June

Foxcombe Road is ideally located just 0.1 mile away from Chelsea Road which has many amenities and shops. The A4 Bath Road is located just 0.15 miles away where you can catch the bus into the city centre located 1.2 miles away. The apartment would suit a professional couple. The landlord will not accept smoking, pets, students or children.

The property comprises of entrance hall leading up to the first floor where you have lounge with bay sash windows and feature fireplace, there is also a handy storage cupboard. The kitchen has base and wall units, cooker, hob, extractor, 3/4 fridge freezer and washing machine. The Bathroom has WC, sink with vanity unit and bath with shower. The second bedroom has a feature fireplace and sash windows, this could be used as a second reception room, this room also has a storage cupboard. There is a staircase leading upstairs to the master bedroom with feature fireplace and window.

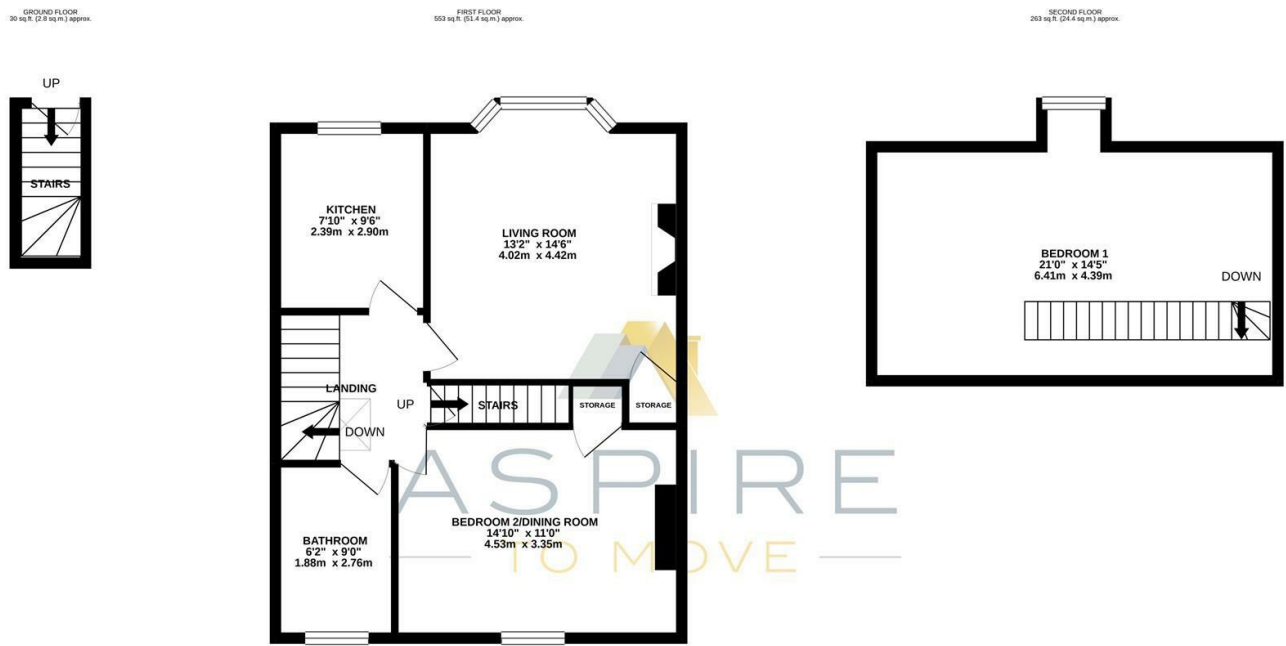
The property would ideally suit a professional couple, no pets or smoking permitted.

Council tax band C: £1968.48





Floor Plan



FOXCOMBE ROAD

TOTAL FLOOR AREA : 846 sq.ft. (78.6 sq.m.) approx.

Whilst every attempt has been made to ensure the accuracy of the floorplan contained here, measurements of doors, windows, rooms and any other items are approximate and no responsibility is taken for any error, omission or mis-statement. This plan is for illustrative purposes only and should be used as such by any prospective purchaser. The services, systems and appliances shown have not been tested and no guarantee as to their operability or efficiency can be given.

Made with Metropix ©2020

These particulars, whilst believed to be accurate are set out as a general outline only for guidance and do not constitute any part of an offer or contract. Intending purchasers should not rely on them as statements of representation of fact, but must satisfy themselves by inspection or otherwise as to their accuracy. No person in this firms employment has the authority to make or give any representation or warranty in respect of the property.

