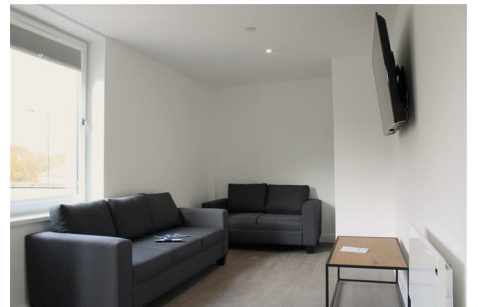
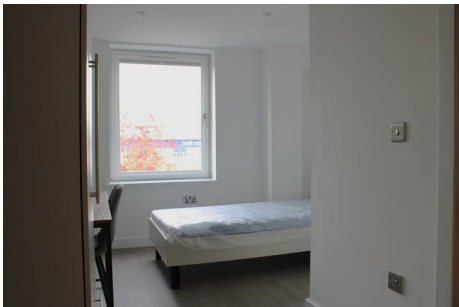




# ASPIRE

— TO MOVE —



## The Wheel House, Lower Bristol Road, Bath, BA2

Five rooms available in a cluster flat, each with its own shower room and shared communal living and kitchen space.

The Wheel House offers a comfortable retreat for both study and relaxation, seamlessly blending the best of student life into one stylish experience. With studios and en-suite bedrooms available on each floor, the property includes bike storage, an electronic entry system, a 24/7 maintenance line, and a fully managed lettings service to ensure a hassle-free living experience.

**£972 PCM**

# The Wheel House, Lower Bristol Road, Bath, BA2

- Five rooms in a cluster flat
- Each room has it's own shower, WC and sink
- Furnished
- All bills included
- Holding deposit: £224
- Deposit: One months rent
- 12 month contract
- Available 4th September

Five rooms available in a cluster flat, each with it's own shower room and shared communal living and kitchen space.

The Wheel House offers a comfortable retreat for both study and relaxation, seamlessly blending the best of student life into one stylish experience. With studios and en-suite bedrooms available on each floor, the property includes bike storage, an electronic entry system, a 24/7 maintenance line, and a fully managed lettings service to ensure a hassle-free living experience.

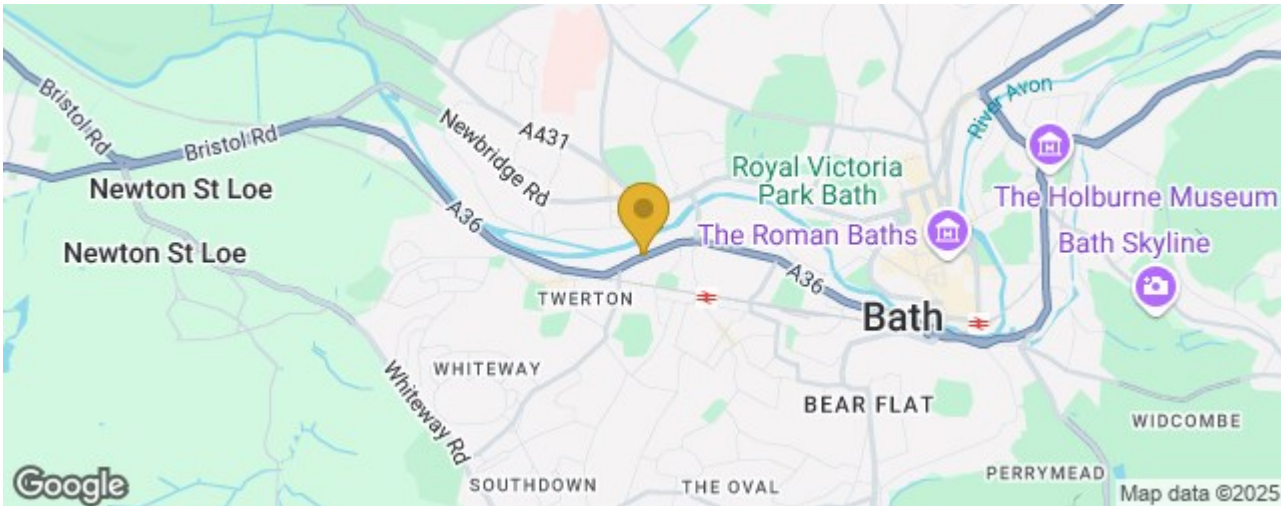
The communal areas feature a modern kitchen, dining, and lounge space complete with a smart TV, creating the perfect environment for students to study and unwind.

Conveniently located 1.5 miles west of Bath city centre, The Wheel House is ideally situated for both the University of Bath (3.4 miles) and Bath Spa University (3.2 miles), with direct bus routes to both. Bath Spa Railway Station is 1.5 miles away, while Oldfield Park Railway Station is just 0.5 miles away, providing easy access to Bristol Temple Meads and Bath Spa.

For everyday needs, Lidl Supermarket is just across the road, and Sainsbury's, PureGym, and M&S Foodhall are all within a mile. With Bath City Centre approximately 1.5 miles to the east and easy access to the cycle path, you'll have everything you need right at your doorstep.

- Key Features:
- Fully Furnished Studios
  - All Utilities Included
  - Free Wifi Service
  - Maintenance App for Reporting Issues
  - Fully Managed Lettings Service
  - Exclusive Rengen discount card to use at local retailers

Please note that images are for marketing purposes only and may not relate to each specific apartment.





Floor Plan

These particulars, whilst believed to be accurate are set out as a general outline only for guidance and do not constitute any part of an offer or contract. Intending purchasers should not rely on them as statements of representation of fact, but must satisfy themselves by inspection or otherwise as to their accuracy. No person in this firms employment has the authority to make or give any representation or warranty in respect of the property.

