



ASPIRE

— TO MOVE —



Broad Street, Bath, BA1

Video and physical viewings available. Studio flat located on Broad Street, central Bath. The flat is offered furnished and is available from the 12th May.

Broad Street is located in central Bath and close to lots of local amenities. Broad Street itself offers local shops including a hairdresser, restaurant, café and convenience store. There is a bus stop at the bottom of Broad Street 0.1 miles away.

£1,100 PCM

Broad Street, Bath, BA1

- Studio apartment
- Clever attic space for sleeping
- Holding deposit: £253
- Furnished
- Available 12th May
- Deposit: £1269
- Mature student or professional
- City centre
- No parking
- Council tax band A

Video and physical viewings available. Studio flat located on Broad Street, central Bath. The flat is offered furnished and is available from the 12th May 2025.

Broad Street is located in central Bath and close to lots of local amenities. Broad Street itself offers local shops including a hairdresser, restaurant, café and convenience store. There is a bus stop at the bottom of Broad Street 0.1 miles away.

The apartment is on the top floor and offers views over the city. You enter into an open plan kitchen/dining room. The kitchen area has base and wall units, oven, hob and extractor, fridge, freezer, washer/dryer. There is a dining table with stools. The living area is furnished with a sofa, armchair, side tables, storage, including a built in wardrobe, and a desk with chair. The property currently has a loft/attic space set up as a sleeping area, and is furnished with a double mattress and clothing rail. There is a shower room with shower cubicle, sink and WC.

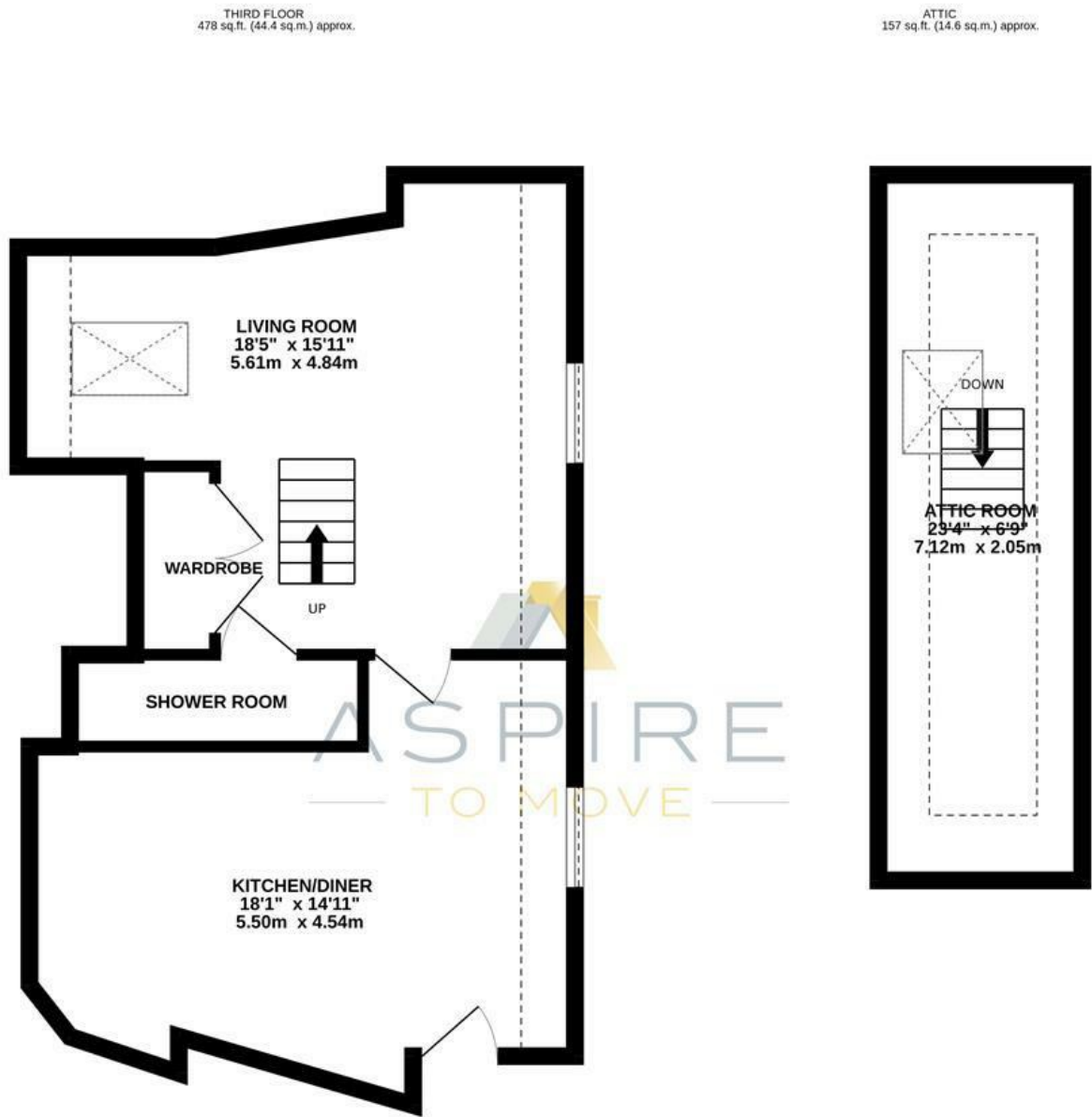
The property is offered furnished and would best suit a single professional, couple or mature student. Available from May

Council tax band A: £1476.36





Floor Plan



17-18 BROAD STREET, BATH, BA1

TOTAL FLOOR AREA : 635 sq.ft. (59.0 sq.m.) approx.
Whilst every attempt has been made to ensure the accuracy of the floorplan contained here, measurements of doors, windows, rooms and any other items are approximate and no responsibility is taken for any error, omission or mis-statement. This plan is for illustrative purposes only and should be used as such by any prospective purchaser. The services, systems and appliances shown have not been tested and no guarantee as to their operability or efficiency can be given.
Made with Metropix ©2025

These particulars, whilst believed to be accurate are set out as a general outline only for guidance and do not constitute any part of an offer or contract. Intending purchasers should not rely on them as statements of representation of fact, but must satisfy themselves by inspection or otherwise as to their accuracy. No person in this firms employment has the authority to make or give any representation or warranty in respect of the property.

