



ASPIRE

— TO MOVE —



Monmouth Place, Bath, BA1

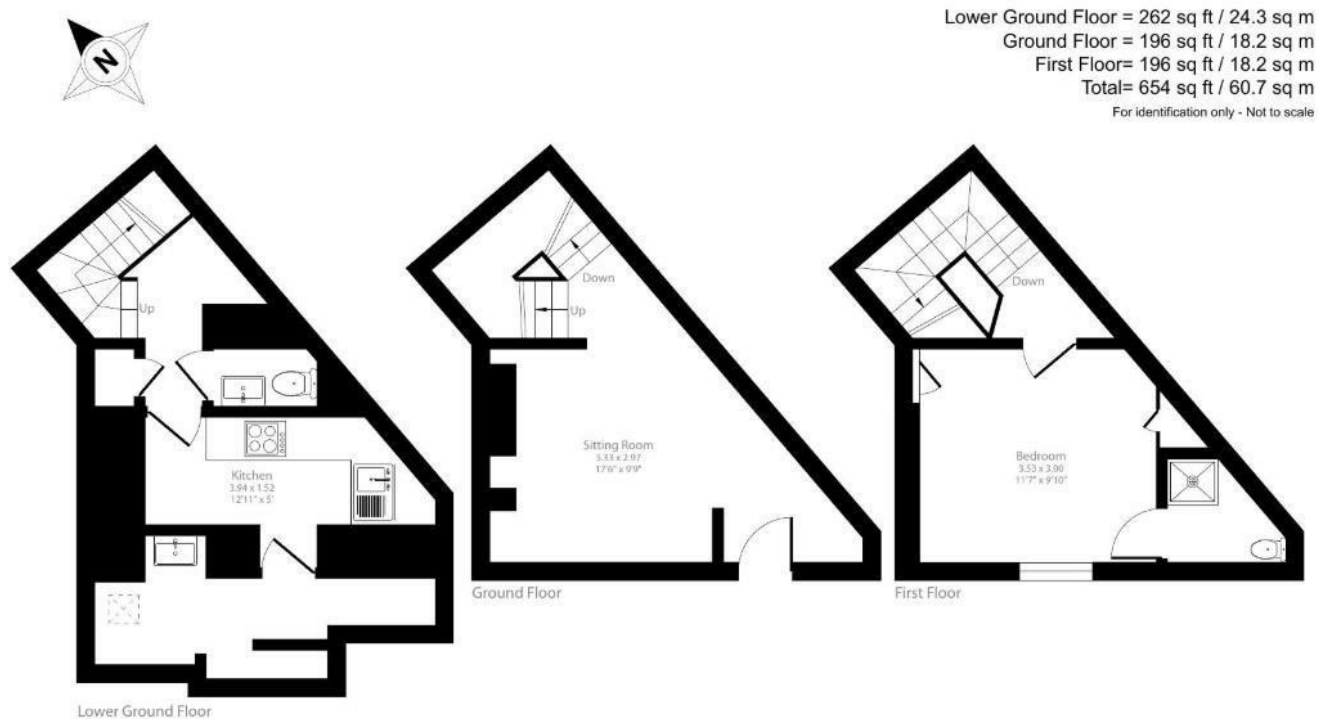
Video and physical viewings available. A quirky one bedroom maisonette set over three floors, located in Bath city centre. The property is available now and offered furnished.

Monmouth Place is located just west of Bath city centre, 0.2 miles away from Queen Square. Local shops can be found in the city centre and the nearest supermarket is Sainsbury's which is a 5 minute walk away. Royal Victoria Park is 0.2 miles away and there is a bus stop just outside the apartment.

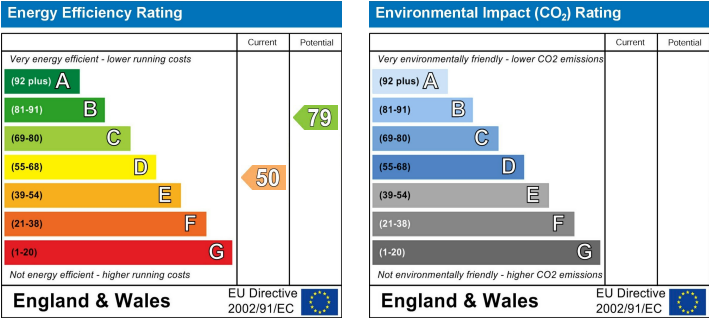
£1,175 PCM

- Video viewing available
- One bedroom maisonette with own front door
- Furnished
- Available now
- Permit parking: Please check availability with Bath council
- Central location
- Council tax band A
- Holding deposit: £271
- Deposit: £1355

Floor Plans



Energy Performance Graph



These particulars, whilst believed to be accurate are set out as a general outline only for guidance and do not constitute any part of an offer or contract. Intending purchasers should not rely on them as statements of representation of fact, but must satisfy themselves by inspection or otherwise as to their accuracy. No person in this firms employment has the authority to make or give any representation or warranty in respect of the property.