



ASPIRE

— TO MOVE —



Weston Park, Bath, BA1

Stylish six bedroom semi-detached property located on Weston Lane, Bath. The property is offered unfurnished and available now

Weston Lane is located to the North West of Bath city centre and provides a level walk into the city centre which is 1.2 miles away. The popular Weston High Street is 0.5 miles away and Victoria Park is 0.4 miles away.

£6,995 PCM

Weston Park, Bath, BA1

- Impressive modern six bedroom house in a Georgian Style
- Two parking spaces
- Sought after residential area
- Six week deposit payable
- Available now
- Unfurnished
- Level walk to Bath city centre
- 12 month initial contract
- Three reception rooms
- Holding deposit: £1614

Stylish six bedroom semi-detached property located on Weston Lane, Bath. The property is offered unfurnished and available now

Weston Lane is located to the North West of Bath city centre and provides a level walk into the city centre which is 1.2 miles away. The popular Weston High Street is 0.5 miles away and Victoria Park is 0.4 miles away.

Boasting six bedrooms, and built in a classic Georgian style this modern family home offers expansive living accomodation with high end fixtures and fittings. The living accomodation is spread over five floors with the lower floor being used for accomodate two reception rooms and utility. On the ground floor there is a large open plan kitchen, dining, living room as well as a WC. The first floor has a third reception room as well as family bathroom and two bedrooms. The second floor is given over to master suite. An impressive master bedroom, dressing room and en-suite with his and hers sinks. The top floor offers two more bedrooms and a bathroom. The accomodation is bright, modern and flexible, offering a family or couple plenty of space to live and relax.

Outside there are front and rear gardens as well as driveway parking to the rear for two cars.

The property is offered unfurnished and available now, for an initial 12 month tenancy.

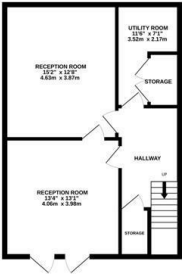
Council tax band G: £3690.90



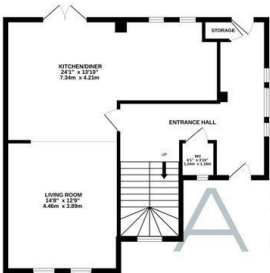


Floor Plan

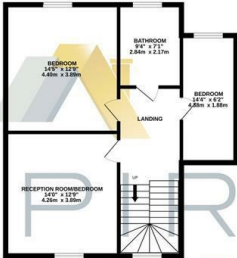
LOWER GROUND FLOOR
566 sq.ft. (52,176 sq.m.) approx.



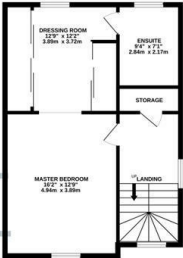
GROUND FLOOR
708 sq.ft. (65,430 sq.m.) approx.



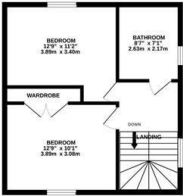
1ST FLOOR
659 sq.ft. (61,176 sq.m.) approx.



2ND FLOOR
556 sq.ft. (51,636 sq.m.) approx.



3RD FLOOR
422 sq.ft. (39,216 sq.m.) approx.



PRIMROSE HOUSE, BATH, BA1

TOTAL FLOOR AREA : 2904 sq.ft. (269.8 sq.m.) approx.

Whilst every attempt has been made to ensure the accuracy of the floorplan contained here, measurements of doors, windows, rooms and any other items are approximate and no responsibility is taken for any error, omission or mis-statement. This plan is for illustrative purposes only and should be used as such by any prospective purchaser. The services, systems and appliances shown have not been tested and no guarantee as to their operability or efficiency can be given.
Made with Metropix ©2024

These particulars, whilst believed to be accurate are set out as a general outline only for guidance and do not constitute any part of an offer or contract. Intending purchasers should not rely on them as statements of representation of fact, but must satisfy themselves by inspection or otherwise as to their accuracy. No person in this firms employment has the authority to make or give any representation or warranty in respect of the property.

