



ASPIRE

— TO MOVE —



Upper East Hayes, Bath, BA1

Video and physical viewings available. Two bedroom coach house located on Upper East Hayes, Bath. The property is available from the 10th October and offered unfurnished.

Upper East Hayes is located in the Camden area of Bath and provides good access in and out of Bath city centre. Local amenities can be found in Larkhall 0.5 miles away, including a butchers, cafe's, delicatessen and convenience store. There is a pub, barbers, hairdressers and an estate agent 0.1 miles away.

£1,450 PCM

Upper East Hayes, Bath, BA1

- Two bedroom coach house
- Council tax band B
- Unfurnished
- Garage
- Own private entrance
- Available 10th October
- Video viewing available
- Loft storage
- Holding deposit: £334

FULLY BOOKED

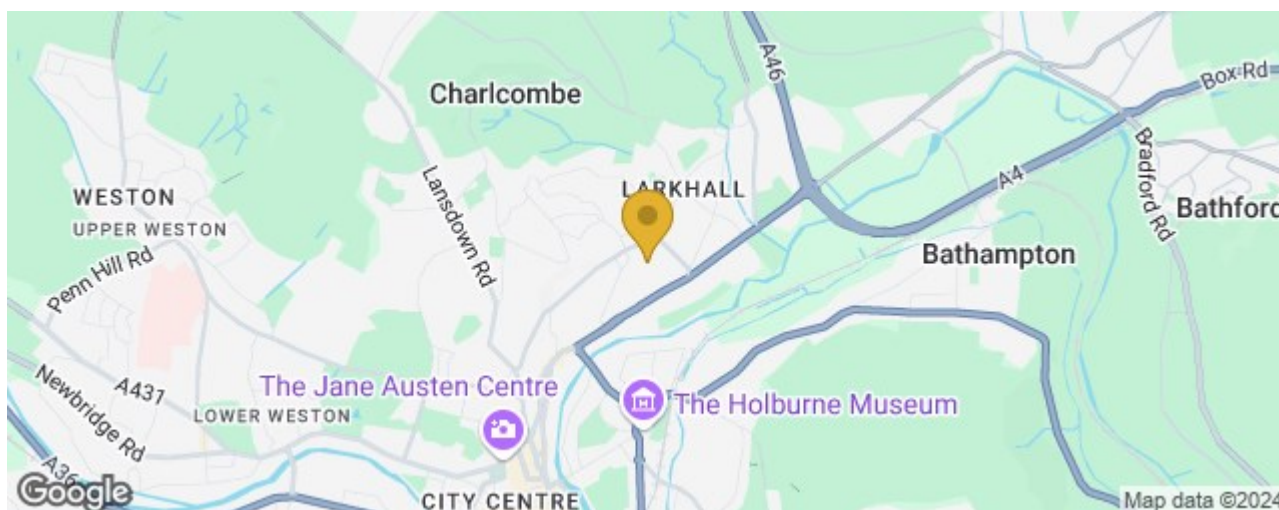
Video and physical viewings available. Two bedroom coach house located on Upper East Hayes, Bath. The property is available from the 10th October and offered unfurnished.

Upper East Hayes is located in the Camden area of Bath and provides good access in and out of Bath city centre. Local amenities can be found in Larkhall 0.5 miles away, including a butchers, cafe's, delicatessen and convenience store. There is a pub, barbers, hairdressers and an estate agent 0.1 miles away.

This smartly presented property offers charm and quite a unique take to apartment style living in Bath. The property benefits from it's own private entrance and no neighbours above or below, apart from garages. A couple of steps lead up to the front door which opens into a hallway. The main bedroom is located on the right hand side and is a good sized double. This room benefits from two built in wardrobes which features shelving and a rail. The second bedroom is smaller and would be best used as a study or guest bedroom, this room also has a built in wardrobe. The living room has space for sofa, coffee table and table and chairs. The kitchen has base and wall units, wooden worktops, cooker, gas hob, washing machine and fridge/freezer. The bathroom has shower over bath, WC and sink. The property offers excellent storage in the hallway with three storage cupboards, there is also access to the loft and an outside cupboard ideal for bin storage to the left hand side of the front door.

The property also benefits from having a garage below which has electrics. The property is available from the 10th October, offered unfurnished and would best suit a professional couple. Sorry, no students.

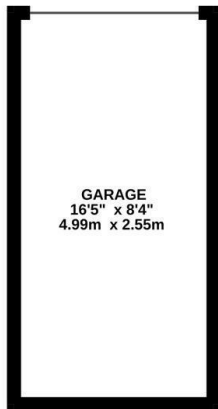
Council tax band B: £1638.83



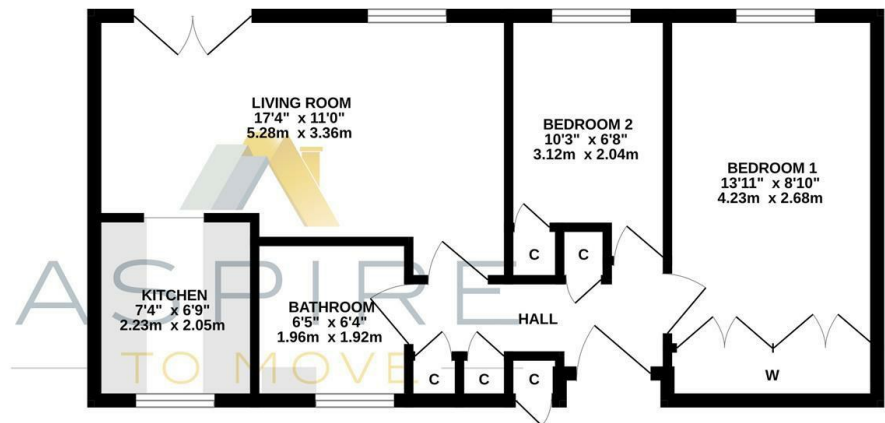


Floor Plan

LOWER GROUND FLOOR
137 sq.ft. (12.7 sq.m.) approx.



GROUND FLOOR
522 sq.ft. (48.5 sq.m.) approx.



UPPER EAST HAYES, BATH, BA1

TOTAL FLOOR AREA: 659 sq.ft. (61.2 sq.m.) approx.

Whilst every attempt has been made to ensure the accuracy of the floorplan contained here, measurements of doors, windows, rooms and any other items are approximate and no responsibility is taken for any error, omission or mis-statement. This plan is for illustrative purposes only and should be used as such by any prospective purchaser. The services, systems and appliances shown have not been tested and no guarantee as to their operability or efficiency can be given.
Made with Metropix ©2023

These particulars, whilst believed to be accurate are set out as a general outline only for guidance and do not constitute any part of an offer or contract. Intending purchasers should not rely on them as statements of representation of fact, but must satisfy themselves by inspection or otherwise as to their accuracy. No person in this firm's employment has the authority to make or give any representation or warranty in respect of the property.

