



ASPIRE

— TO MOVE —



Patch Street, Bath, BA2

Video and physical viewings available. Modern two bedroom house located on the popular Mulberry Park development. The property can be offered unfurnished and is available 5th October.

Mulberry Park is a recent development in the Combe Down area of Bath. The area has good local amenities with a pub, co-op, hairdressers and other shops within 0.5 miles.

£1,600 PCM

Patch Street, Bath, BA2

- Video viewing available
- Two bedroom house
- Available 5th October
- Pets considered at landlords discretion
- Allocated parking space
- Council tax band C
- Unfurnished
- 12 month contract
- Holding deposit: £369.00

Video and physical viewings available. Modern two bedroom house located on the popular Mulberry Park development. The property can be offered unfurnished and is available 5th October.

Mulberry Park is a recent development in the Combe Down area of Bath. The area has good local amenities with a pub, co-op, hairdressers and other shops within 0.5 miles.

On the ground floor there is an open plan kitchen/living/dining room. The kitchen area has base and wall units, cooker, gas hob, extractor, fridge/freezer and a washing machine. The living area has space for sofa, TV unit, and dining room table. Also downstairs is a under stairs cupboard and a shower room with shower, WC and sink.

On the first floor there are two double bedrooms. Both bedrooms are doubles and the slightly smaller room has a balcony overlooking the front of the house. There is a bathroom with bath, WC and sink. Also on this floor are two storage cupboards.

The property is offered unfurnished and available early October 2024. The property benefits from one allocated parking space. Pets considered at landlords discretion.

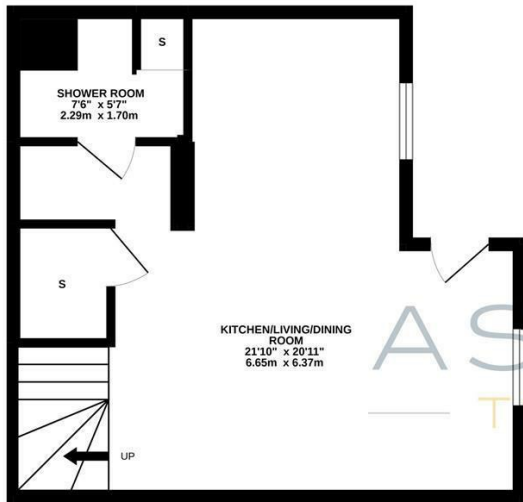
Council tax band C: £1,872.94



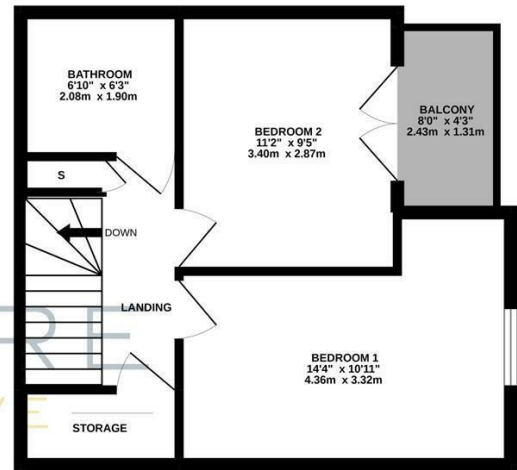


Floor Plan

GROUND FLOOR
400 sq.ft. (37.1 sq.m.) approx.



1ST FLOOR
370 sq.ft. (34.4 sq.m.) approx.



PATCH STREET, MULBERRY PARK, BATH, BA2

TOTAL FLOOR AREA : 770 sq.ft. (71.5 sq.m.) approx.

Whilst every attempt has been made to ensure the accuracy of the floorplan contained here, measurements of doors, windows, rooms and any other items are approximate and no responsibility is taken for any error, omission or mis-statement. This plan is for illustrative purposes only and should be used as such by any prospective purchaser. The services, systems and appliances shown have not been tested and no guarantee as to their operability or efficiency can be given.
Made with Metropix ©2022

These particulars, whilst believed to be accurate are set out as a general outline only for guidance and do not constitute any part of an offer or contract. Intending purchasers should not rely on them as statements of representation of fact, but must satisfy themselves by inspection or otherwise as to their accuracy. No person in this firm's employment has the authority to make or give any representation or warranty in respect of the property.

