



ASPIRE

— TO MOVE —



Windsor Castle, Upper Bristol Road, Bath, BA1

Video and physical viewings available. Unfurnished one bedroom apartment with private off-street parking space and communal courtyard, available 24th August.

Windsor Castle is located to the west side of Bath city centre and is a level 1 mile walk away. There are local shops on Chelsea Road, 0.3 miles away. There is a Tesco convenience store opposite. Windsor castle is a development of residential accommodation that is accessed via a security gate.

£1,250 PCM

Windsor Castle, Upper Bristol Road, Bath, BA1

- Video viewing available
- Council tax band B
- Available 24th August
- Spacious one bedroom flat
- Communal bin storage and bike store
- Initial 12 month tenancy
- Allocated parking space
- Communal courtyard
- Holding deposit: £288

*FULLY BOOKED *

Video and physical viewings available. Unfurnished one bedroom apartment with private off-street parking space and communal courtyard, available 24th August.

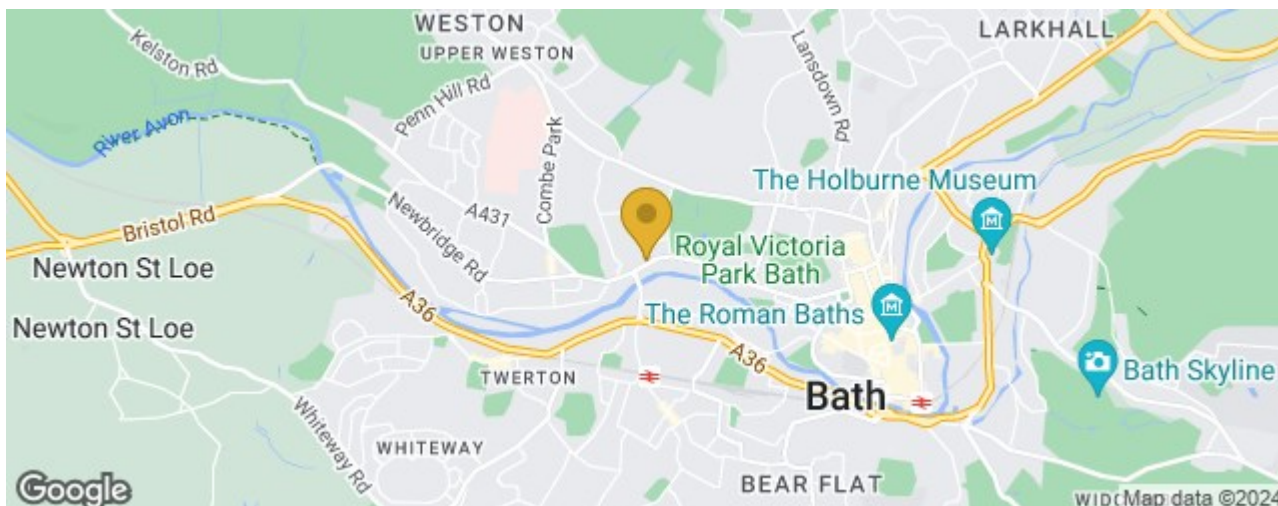
Windsor Castle is located to the west side of Bath city centre and is a level 1 mile walk away. There are local shops on Chelsea Road, 0.3 miles away. There is a Tesco convenience store opposite. Windsor castle is a development of residential accommodation that is accessed via a security gate.

There is an entrance hallway which has two storage cupboards. This leads you through into the open plan kitchen/living/dining room. The kitchen has base and wall units, cooker, hob, fridge, freezer, slimline dishwasher, washing machine and microwave. The remaining space has an area for a dining table and chairs and an area for sofa, coffee table and TV. The bedroom is a good size with a built-in wardrobe. The bathroom has shower over bath, WC and sink.

The flat benefits from communal bins, courtyard, a bike store and an allocated parking space.

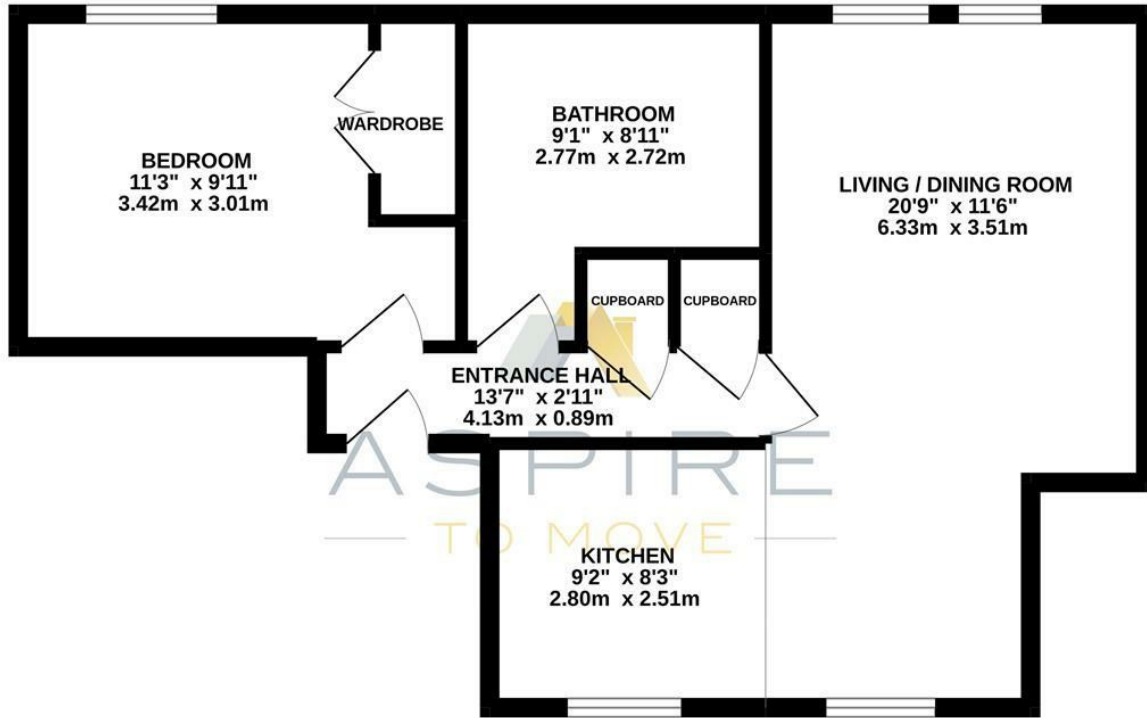
The flat is available from the 24th August and would best suit a single professional or couple. Please note the landlord is looking for a minimum of a 12 month tenancy.

Council tax band B: £1638.83





GROUND FLOOR
549 sq.ft. (51.0 sq.m.) approx.



WINDSOR CASTLE, BATH, BA1

TOTAL FLOOR AREA : 549 sq.ft. (51.0 sq.m.) approx.

Whilst every attempt has been made to ensure the accuracy of the floorplan contained here, measurements of doors, windows, rooms and any other items are approximate and no responsibility is taken for any error, omission or mis-statement. This plan is for illustrative purposes only and should be used as such by any prospective purchaser. The services, systems and appliances shown have not been tested and no guarantee as to their operability or efficiency can be given.
Made with Metropix ©2022

These particulars, whilst believed to be accurate are set out as a general outline only for guidance and do not constitute any part of an offer or contract. Intending purchasers should not rely on them as statements of representation of fact, but must satisfy themselves by inspection or otherwise as to their accuracy. No person in this firms employment has the authority to make or give any representation or warranty in respect of the property.

