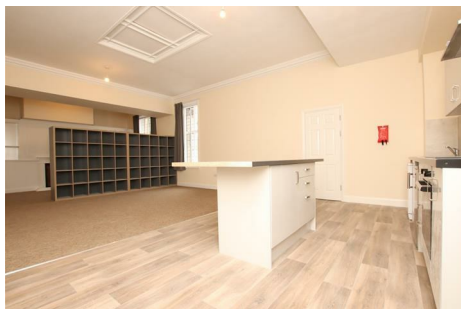




ASPIRE

— TO MOVE —



The Weston, Newbridge Road, Bath, BA1

Video and physical viewings available. Impressive studio flat that can be offered furnished or unfurnished and available from the 6th June on an initial 12 months contract. Students considered.

Newbridge occupies an area to the west of Bath city centre, just north of the River Avon. The main shopping area in Newbridge is Chelsea Road, a small area of shops, restaurants and hairdressers. Shops include a bakery, a hardware shop, a SPAR supermarket, a cycle shop and nearby on Newbridge Road a post office. Bus stops can be found at regular intervals along both Newbridge Road and Newbridge Hill which provide access to Bath city centre and both universities. Bath spa train station is 1.7 miles from Chelsea Road. The area benefits from its close proximity to the Royal United Hospital.

£1,295 PCM

The Weston, Newbridge Road, Bath, BA1

- Recently renovated in 2023
- 12 month contract
- Council tax: Awaiting banding
- Parking space
- Video viewing available
- Holding deposit £298
- Available 6th June
- Close to local amenities
- Initial 12 month contract

Video and physical viewings available. Impressive studio flat that can be offered furnished or unfurnished and available from the 6th June on an initial 12 months contract. Students considered.

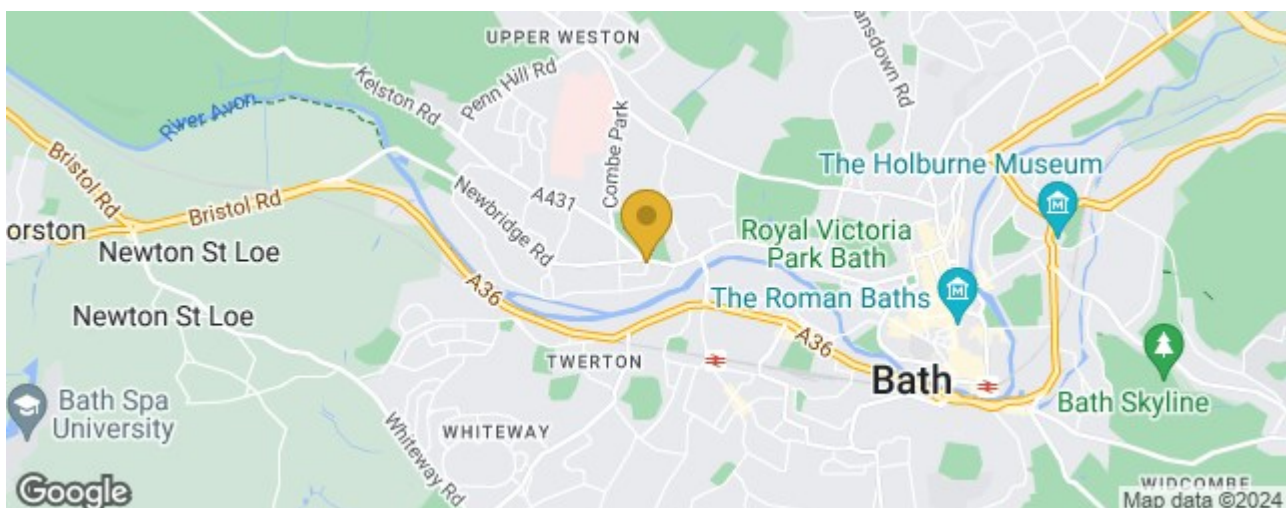
Newbridge occupies an area to the west of Bath city centre, just north of the River Avon. The main shopping area in Newbridge is Chelsea Road, a small area of shops, restaurants and hairdressers. Shops include a bakery, a hardware shop, a SPAR supermarket, a cycle shop and nearby on Newbridge Road a post office. Bus stops can be found at regular intervals along both Newbridge Road and Newbridge Hill which provide access to Bath city centre and both universities. Bath spa train station is 1.7 miles from Chelsea Road. The area benefits from its close proximity to the Royal United Hospital.

The flat was refurbished summer 2023 and can be offered furnished or unfurnished. The flat benefits from communal bin and bike storage, an allocated parking space, visitor parking and access to electric car charging. The development features 7 other flats that have all recently been converted and redecorated.

The accommodation comprises of a large open plan studio with kitchen area, island, bookcase, and bedroom area. The bathroom has shower over bath, WC and sink. There is also a utility room.

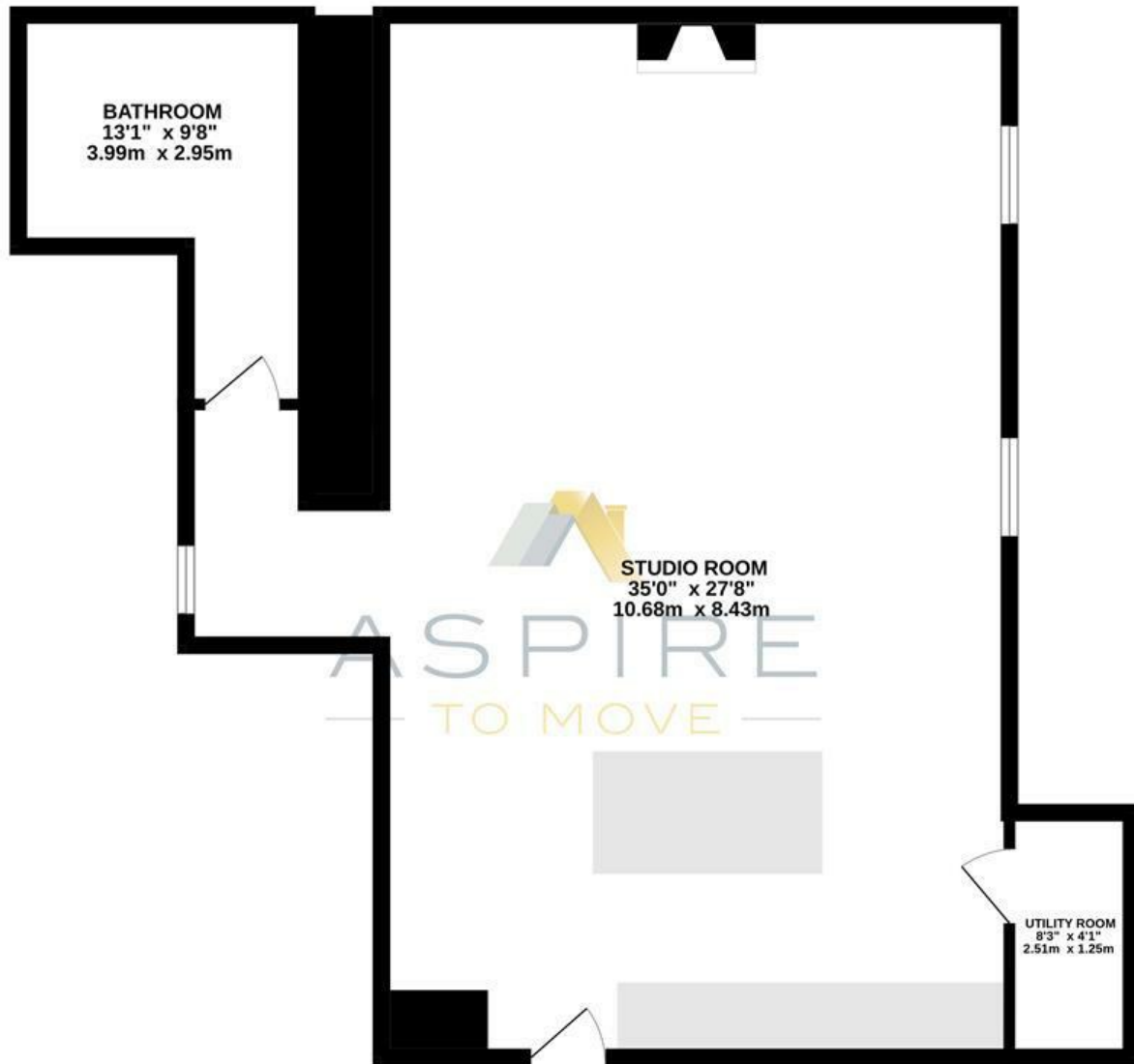
The flat is available from the 6th June on an initial 12 months contract. Students considered.

Council tax band B: £1638.83





GROUND FLOOR
900 sq.ft. (83.7 sq.m.) approx.



FLAT 4 THE WESTON, BATH, BA1

TOTAL FLOOR AREA : 900 sq.ft. (83.7 sq.m.) approx.

Whilst every attempt has been made to ensure the accuracy of the floorplan contained here, measurements of doors, windows, rooms and any other items are approximate and no responsibility is taken for any error, omission or mis-statement. This plan is for illustrative purposes only and should be used as such by any prospective purchaser. The services, systems and appliances shown have not been tested and no guarantee as to their operability or efficiency can be given.
Made with Metropix ©2023

These particulars, whilst believed to be accurate are set out as a general outline only for guidance and do not constitute any part of an offer or contract. Intending purchasers should not rely on them as statements of representation of fact, but must satisfy themselves by inspection or otherwise as to their accuracy. No person in this firm's employment has the authority to make or give any representation or warranty in respect of the property.

