

A modern, open-plan kitchen and dining area. The kitchen features a white countertop, a sink, and a clock on the wall. A dining table with four grey chairs is set for a meal. A mezzanine level with a glass railing is visible above. The scene is overlaid with a dark teal background and geometric shapes.

ST ANDREWS
COURT

Wellington Street, Thame | OX9 3WT



A stunning collection of nine brand new contemporary apartments in the heart of Thame.

LUXURY
TOWN CENTRE
LIVING



LOCATION
THAME

Thame offers a picturesque setting enriched with cultural heritage. Its close-knit community, thriving local businesses, and vibrant social scene foster a sense of belonging, making Thame a truly special place to call home.



COFFEE SHOPS

- Treacles Tea rooms
- The Coffee House
- The Woodworks Trading
- Black Goo Café
- Monkey Puzzle
- Gail's Bakery



PUBS & RESTAURANTS

- | | |
|----------------|-----------------|
| Birdcage Inn | The Black Horse |
| The Six Bells | Old Nags Head |
| Thatch | Prezzo |
| The Rising Sun | Gloria's |
| The James Figg | Candelo Lounge |
| Spread Eagle | The Cross Keys |

SUPERMARKETS

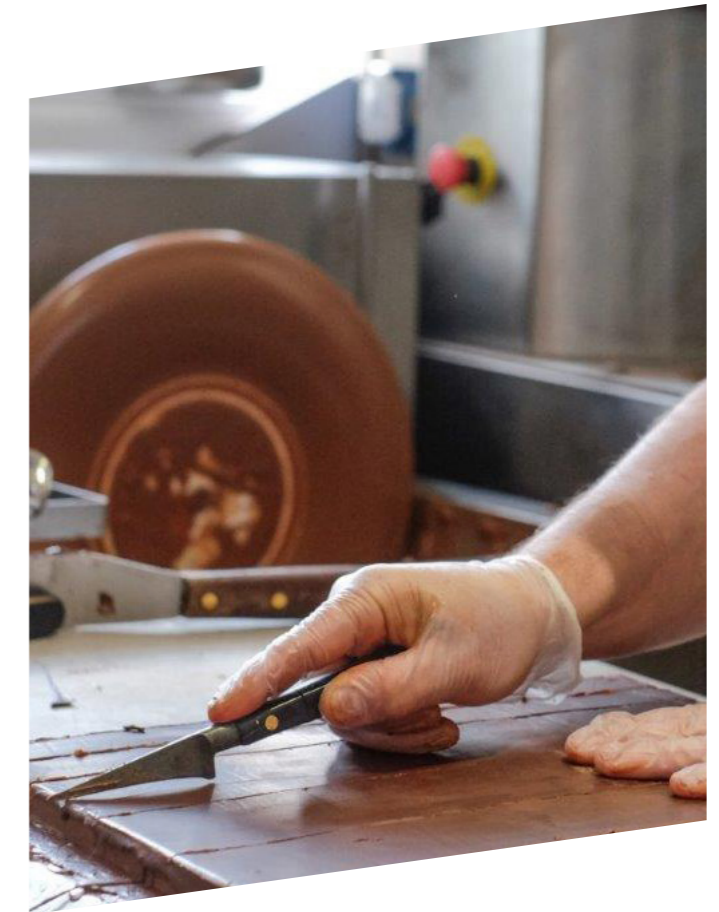
- Sainsbury's
- Morrisons
- Waitrose



LEISURE

- Racquets Fitness Centre
- Invictus Gym
- Thame Leisure Centre
- Thame Bowls Club
- Snooker Club
- Thame Tennis Club
- AB Golf Performance Centre

Thame, Oxfordshire, captivates with its unique blend of *historic charm and modern amenities*



ATTRACTIONS

- Weekly Farmers Market
- Thame Museum
- Players Art Theatre
- Rumsey's Chocolatier
- Waddeston Manor

Every amenity, *right on your doorstep* in the centre of town.



Thame, Oxfordshire, is a vibrant hub adorned with numerous clothing shops and boutiques. Its charm extends to independent shops and farmers market, adding a delightful blend of local flair to its shopping scene.

COFFEE SHOPS

- 1 Treacles Tea rooms
- 2 The Coffee House
- 3 The Woodworks Trading
- 4 Black Goo Café
- 5 Monkey Puzzle

ATTRACTIONS

- 1 Thame Museum
- 2 Players Art Theatre
- 3 Rumsey's Chocolatier

LEISURE

- 1 Racquets Fitness Centre
- 2 Invictus Gym
- 3 Thame Leisure Centre
- 4 Thame Bowls Club
- 5 Snooker Club
- 6 Thame Tennis Club
- 7 AB Golf Performance Centre

PUBS & RESTAURANTS

- 1 Birdcage Inn
- 2 The Six Bells
- 3 Thatch
- 4 The Rising Sun
- 5 The James Figg
- 6 Spread Eagle
- 7 The Black Horse
- 8 Old Nags Head
- 9 Prezzo
- 10 Gloria's
- 11 Candelo Lounge
- 12 The Cross Keys

SUPERMARKETS

- 1 Sainsbury's
- 2 Morrisons
- 3 Waitrose



TRAVEL




Find your way around town with many transport options

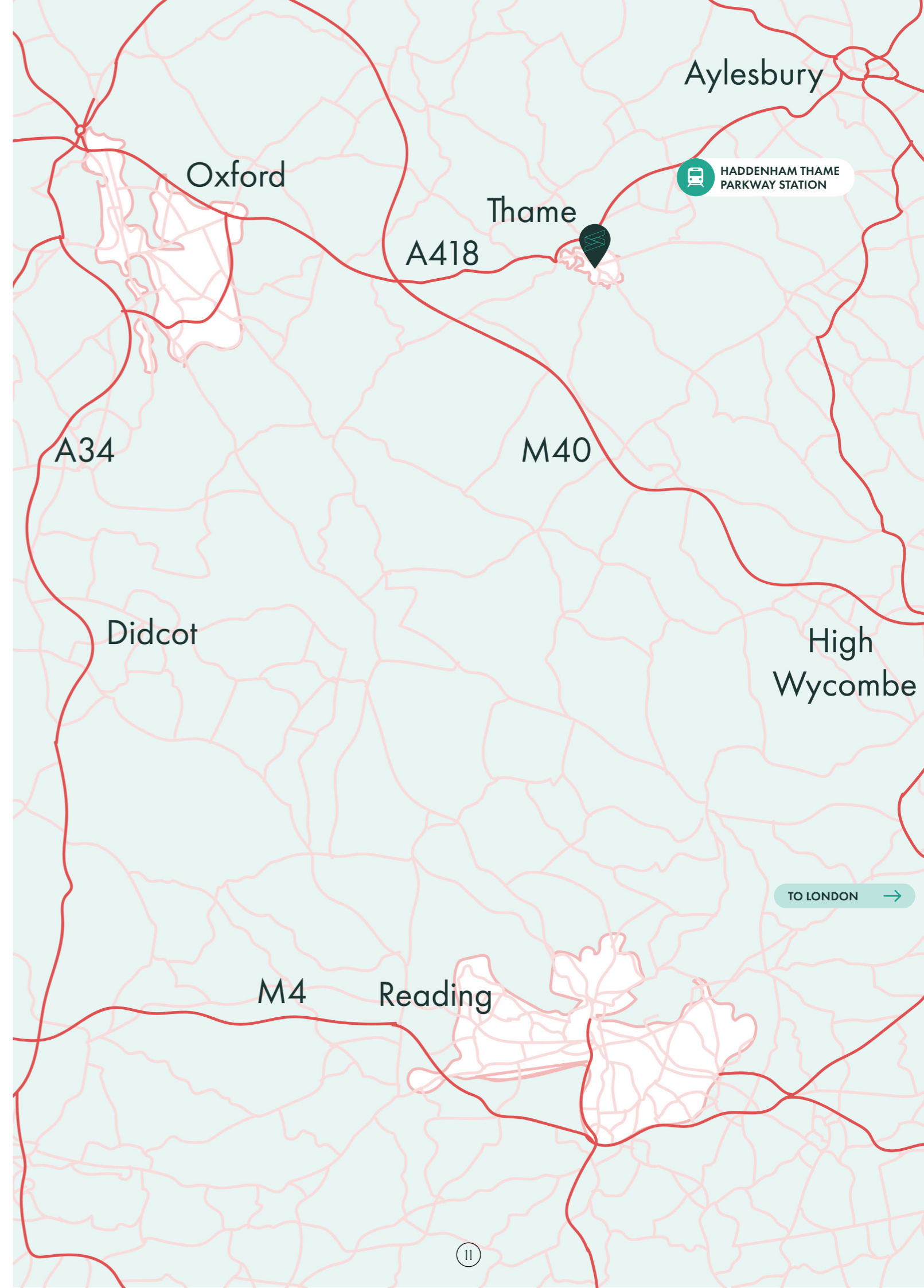
You will be delighted to discover the town's excellent transportation options. With frequent bus services connecting Thame to nearby towns and villages, you can easily explore the surrounding areas and access essential amenities.

Moreover, Thame's efficient train connections to London from Haddenham Parkway Station ensure effortless commuting, granting you access to the vibrant city while enjoying the tranquillity of suburban living.

Whether you're drawn to Thame's charming streets or its proximity to both urban and rural attractions, rest assured that convenient transport options await, enhancing your new life in this welcoming community.

Additionally, the town's excellent transport links, including nearby motorways and train stations, ensure seamless connectivity to surrounding cities, such as Oxford and London.

-  **8 MIN**
to Town Hall bus station
-  **35 MIN**
to Oxford Train Station
- 6 MIN**
to Haddenham Train Station
- 60 MIN**
to Reading
-  **40 MIN**
to London Marylebone station
- 30 MIN**
to Oxford
From Haddenham Parkway station





STUNNING, CONTEMPORARY FINISHES

INTERIOR FINISHES

- ✓ Stone worktops
- ✓ Sleek handleless kitchen cabinets with two tone doors
- ✓ Bosch cooking appliances with integrated microwave
- ✓ Integrated dishwasher

STORAGE SPACE

- ✓ Built in wardrobes / storage to principle bedrooms

AMENITIES & PRIVACY

- ✓ All flats will have access to private amenity spaces

ENERGY EFFICIENCY

- ✓ EPC ratings of C+ and some B

HEATING & FLOORING

- ✓ Gas central heating
- ✓ LVT flooring in living rooms and hallways
- ✓ Carpeted bedrooms

SECURITY AND COMMUNICATION

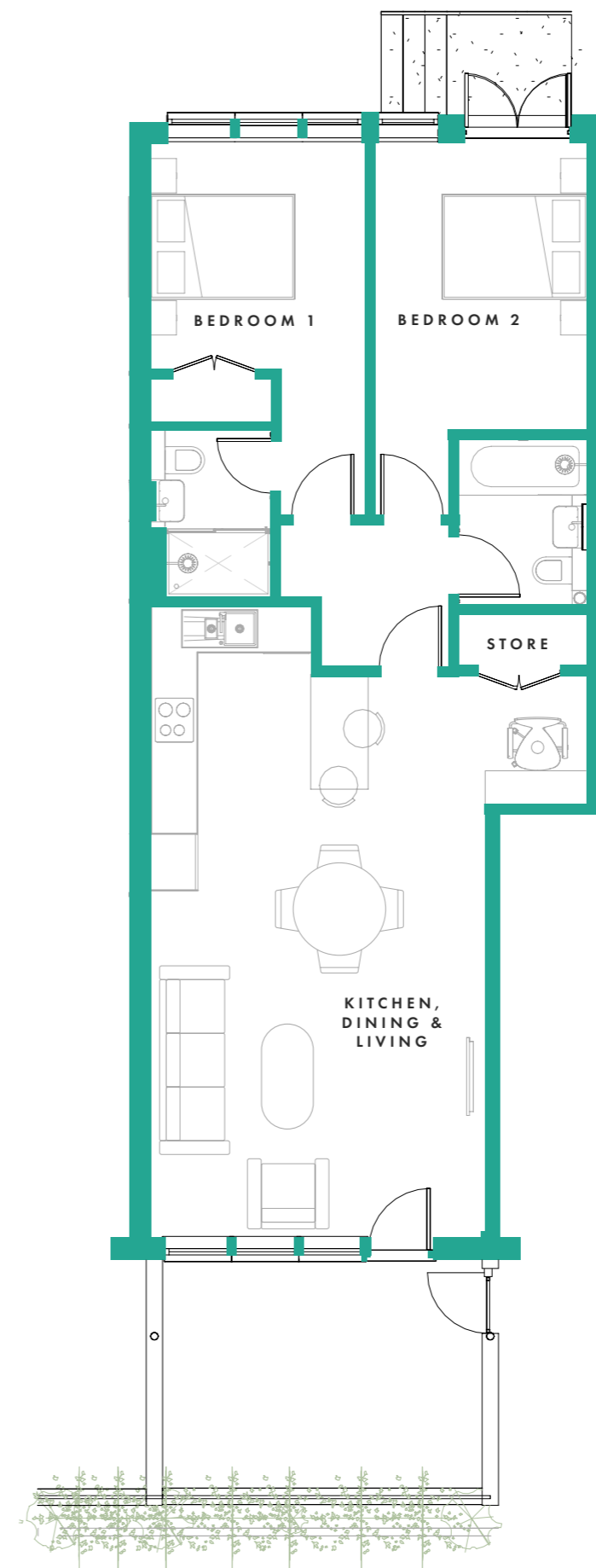
- ✓ Video intercoms

OUR PROMISE

- ✓ 10-year structural defect warranty provided

A stunning collection of nine brand new contemporary apartments in the heart of Thame.

APARTMENT	FLOOR	BEDS	AMENITIES	SIZE	PAGE
No. 1	Ground	2	Garden	78m ² / 840 sq ft	15
No. 2	Ground	2	Garden	79m ² / 850 sq ft	16
No. 7	Ground	2	Garden	77m ² / 829 sq ft	17
No. 3	First	2	Balcony	74m ² / 796 sq ft	18
No. 4	First	2	Balcony	75m ² / 807 sq ft	19
No. 11	First	2	Balcony	71m ² / 764 sq ft	20
No. 5	Second	1	Terrace	45m ² / 484 sq ft	21
No. 6	Second	1	Terrace	52m ² / 560 sq ft	22
No. 16	Second	1	Terrace	47m ² / 506 sq ft	23



Apartment 1

GROUND FLOOR

78m² / 840 sq ft

2 bedrooms

Bedroom 1 - 2.94m x 3.68m
(9'4" x 12'1")

Bedroom 2 - 2.8m x 3.79m
(9'3" x 12'1")

2 bathrooms

Open-plan kitchen, living
& dining room
4.42m x 8.23m (14'6" x 27')

Private garden
4.2m x 3m (13'9" x 9'10")



Apartment 2

GROUND FLOOR

79m² / 850 sq ft

2 bedrooms

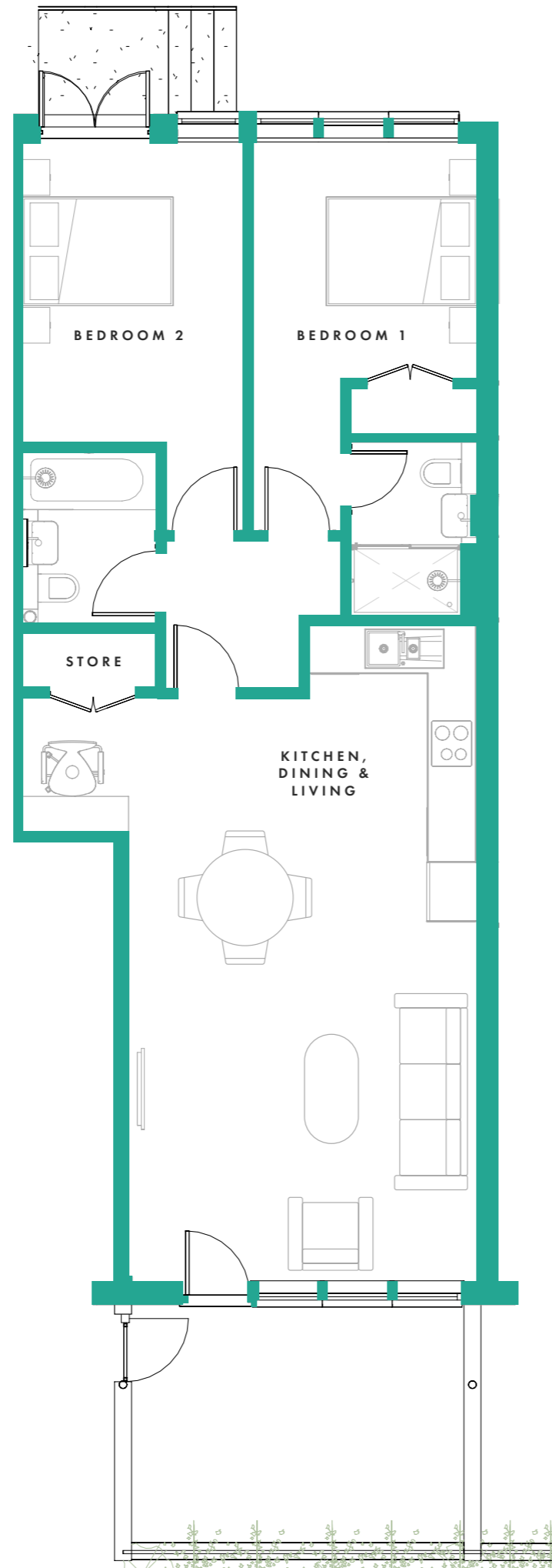
Bedroom 1 - 2.82m x 3.68m
(9'4" x 12'1")

Bedroom 2 - 2.84m x 3.79m
(9'4" x 12'1")

2 bathrooms

Open-plan kitchen,
living & dining room
5.76 m x 8.23m (18'1" x 27')

Private Garden
4.2m x 3m (13'9" x 9'10")



Apartment 7

GROUND FLOOR

77m² / 829 sq ft

2 bedrooms

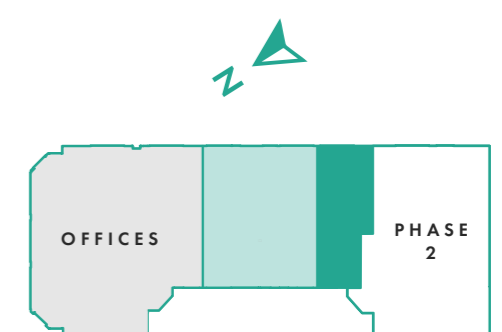
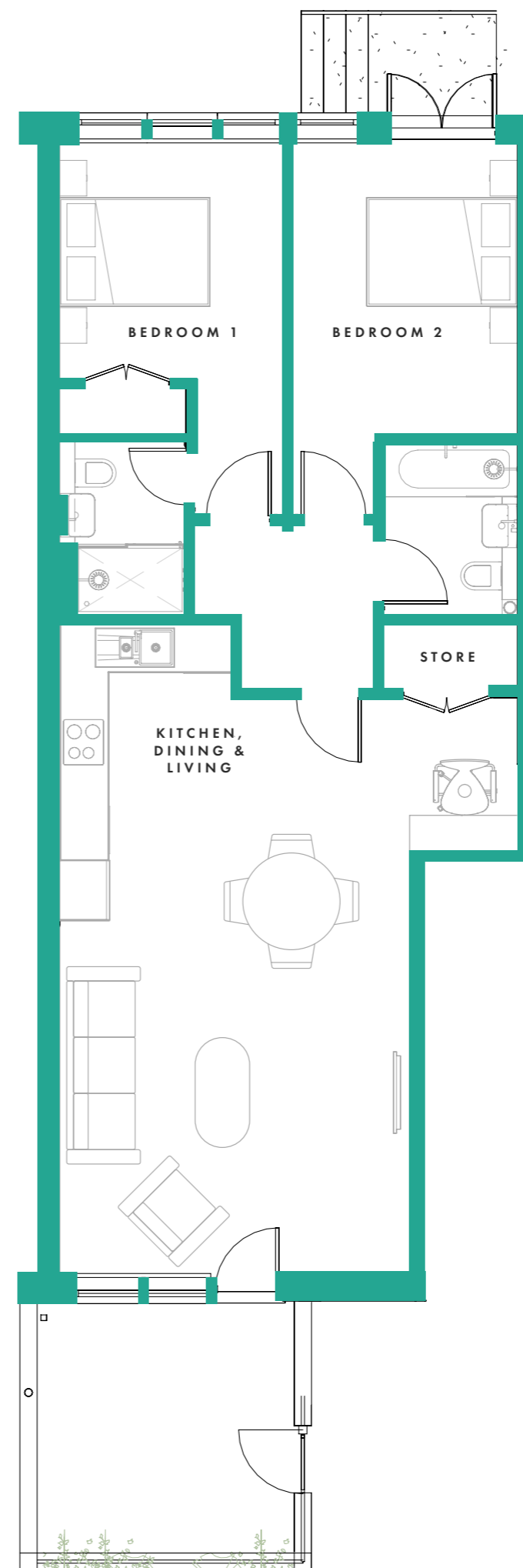
Bedroom 1 - 2.84m x 3.68m
(9'4" x 12'1")

Bedroom 2 - 2.84 x 3.68m
(9'4" x 12'1")

2 bathrooms

Open-plan kitchen,
living & dining room
5.76m x 8.23m (18'1" x 27')

Private garden
3.2m x 3m (10'6" x 9'10")



Apartment 3

FIRST FLOOR

74m² / 796 sq ft

2 bedrooms

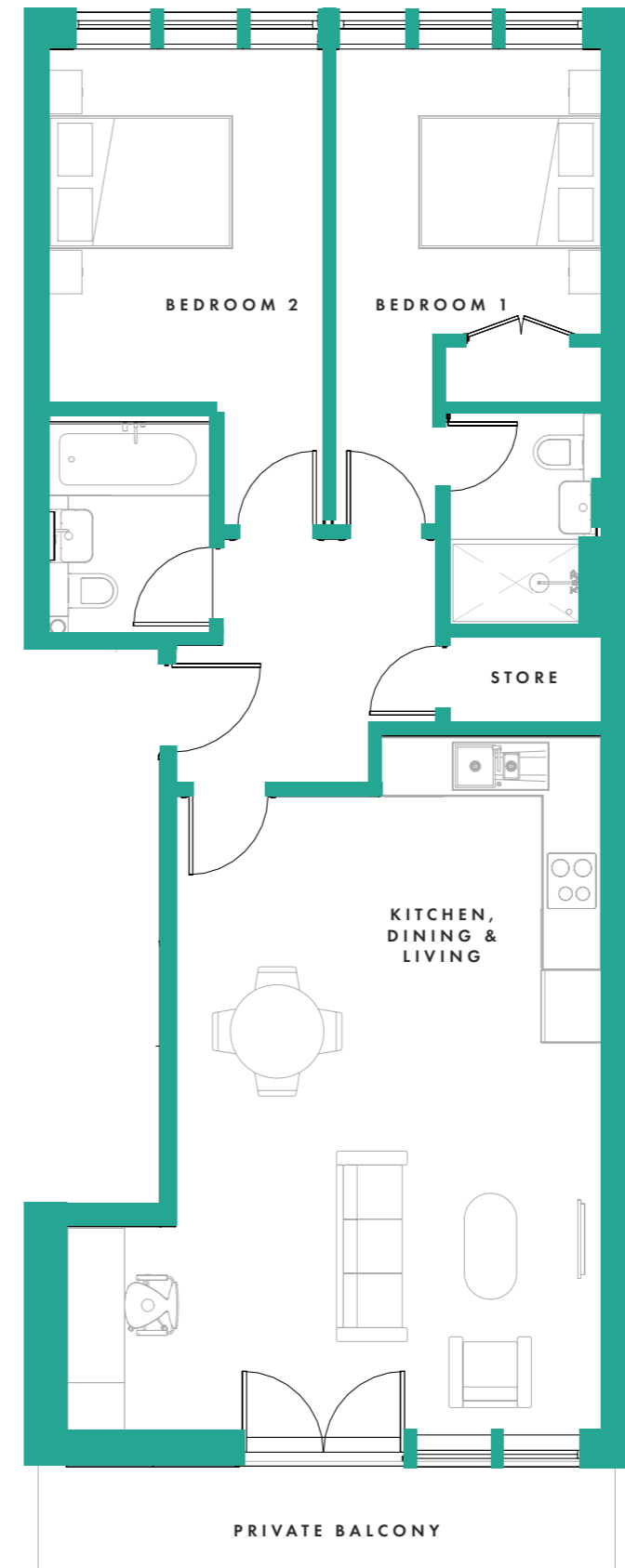
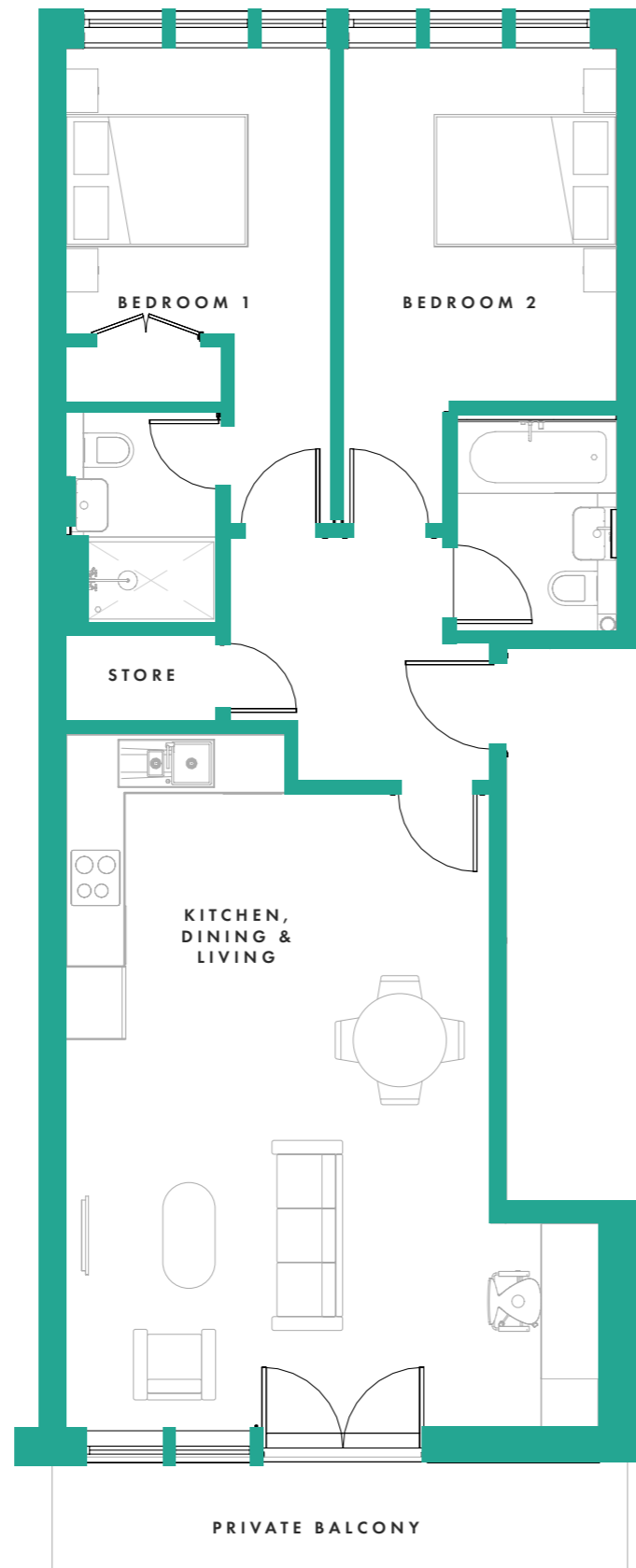
Bedroom 1 - 2.8m x 3.68m
(9'2" x 12'1")

Bedroom 2 - 2.85m x 3.78m
(9'3" x 12'1")

2 bathrooms

Open-plan kitchen,
living & dining room
5.56m x 7.24m (18'3" x 23'9")

Private balcony
5.95m x 1.15m



Apartment 4

FIRST FLOOR

75m² / 807 sq ft

2 bedrooms

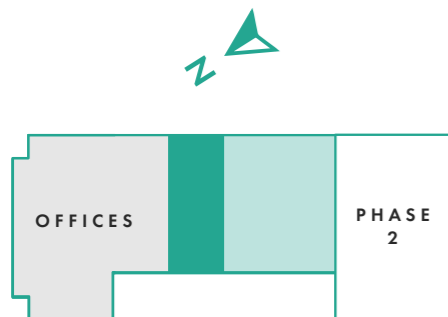
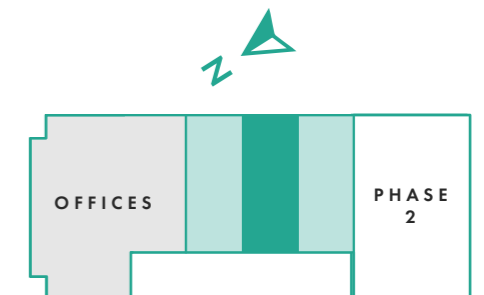
Bedroom 1 - 2.85m x 3.68m
(9'3" x 12'1")

Bedroom 2 - 2.8m x 3.78m
(9'2" x 12'1")

2 bathrooms

Open-plan kitchen,
living & dining room
5.56m x 7.24m (14'5" x 27")

Private balcony
5.95m x 1.15m



Apartment 11

FIRST FLOOR

71m² / 764 sq ft

2 bedrooms

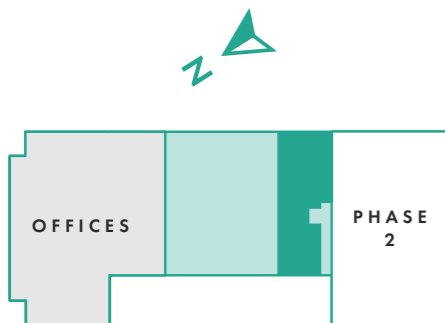
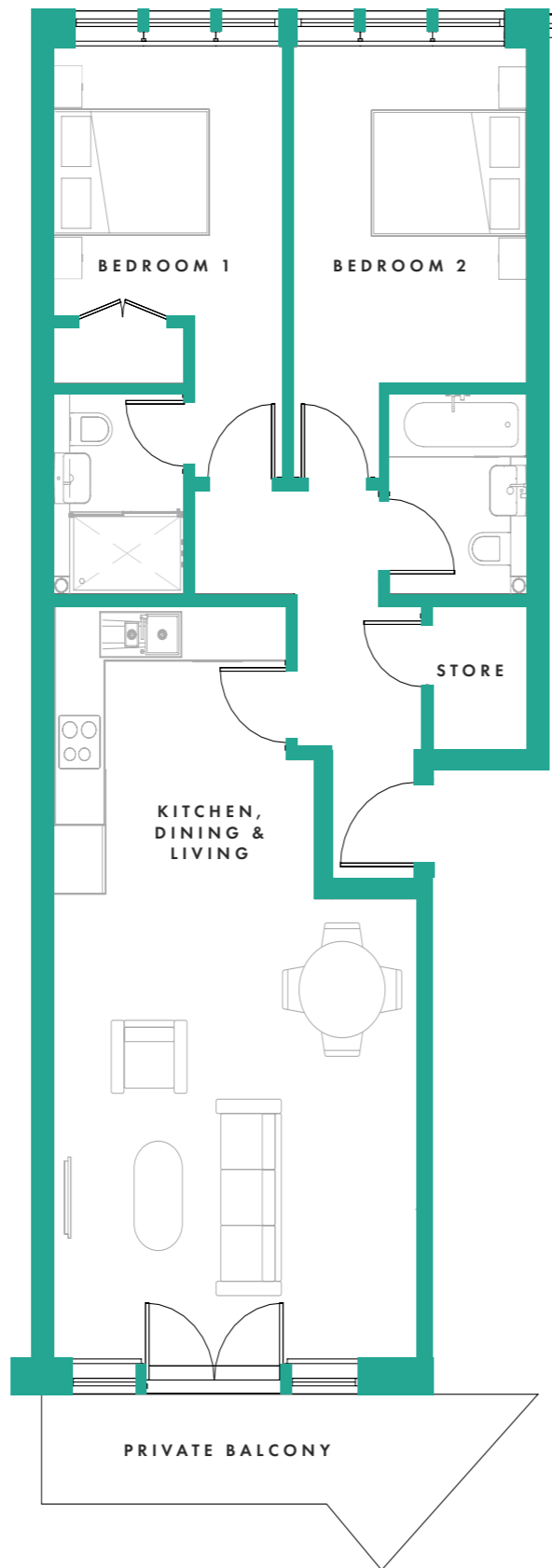
Bedroom 1 - 2.8m x 3.68m
(9'12" x 12'1")

Bedroom 2 - 2.85m x 3.68m
(9'3" x 12'1")

2 bathrooms

Open-plan kitchen,
living & dining room
4.4m x 8.23m (27' x 14'5")

Private balcony
5.58m x 1.15m



Apartment 5

SECOND FLOOR

45m² / 484 sq ft

1 bedrooms
3.78m x 3.25m (12'5" x 10'8")

2 bathrooms

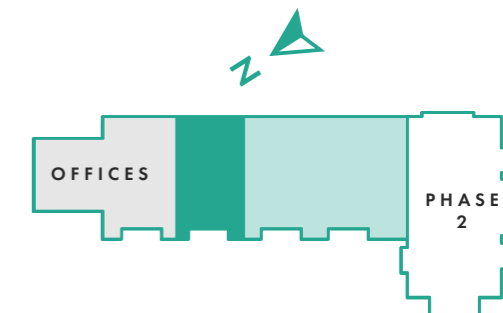
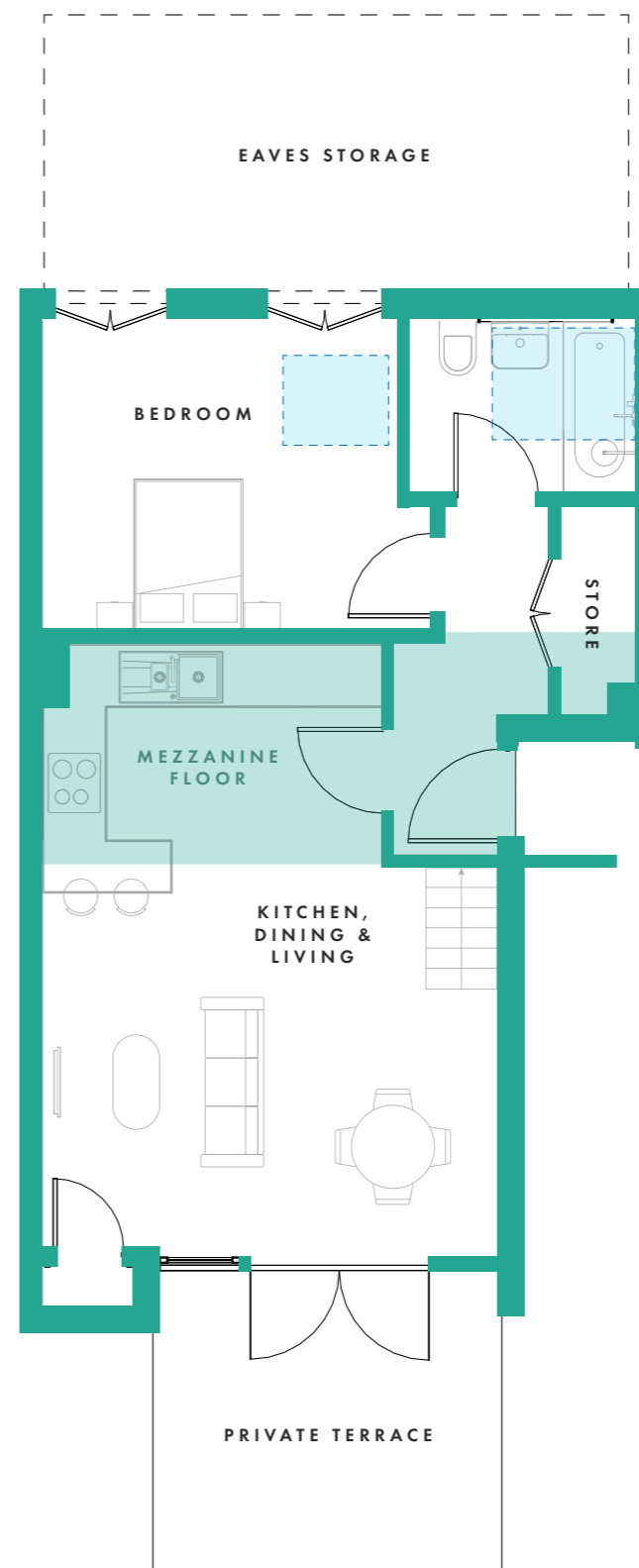
Open-plan kitchen,
living & dining room
4.41m x 5.98m (14'6" x 19'7")

Mezzanine Floor

2.1m x 4.4m (6'9" x 14'4")

*Mezzanine floor has restricted head height

Private terrace
3.3m x 2.8m (10'10" x 9'2")



Apartment 6

SECOND FLOOR

52m² / 560 sq ft

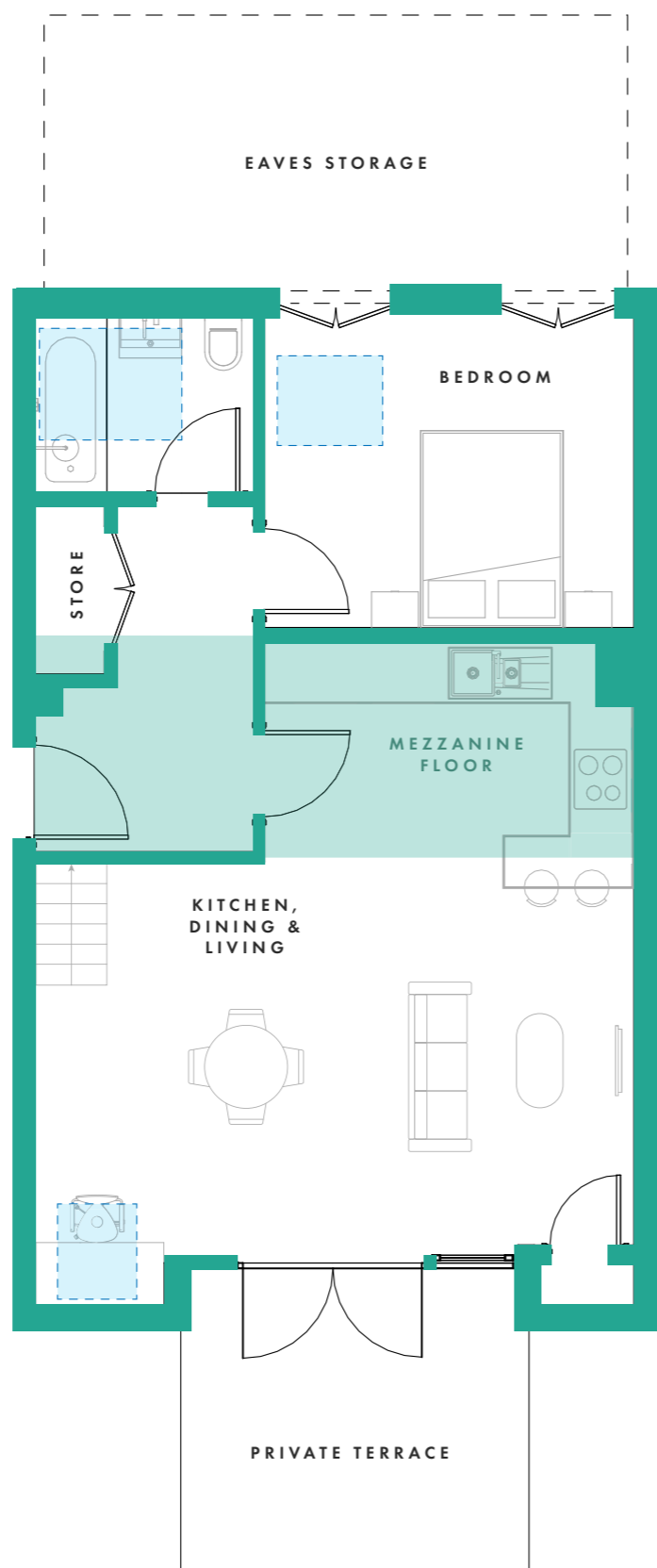
1 bedroom
3.56m x 3.25m (11'1" x 10'8")

2 bathrooms

Open-plan kitchen,
living & dining room
5.77m x 5.98m (18'11" x 19'7")

Mezzanine Floor
2.1m x 5.75m (6'9" x 18'8")
*Mezzanine floor has restricted head height)

Private terrace
3.2m x 2.8m (10'6" x 9'2")



Apartment 16

SECOND FLOOR

47m² / 506 sq ft

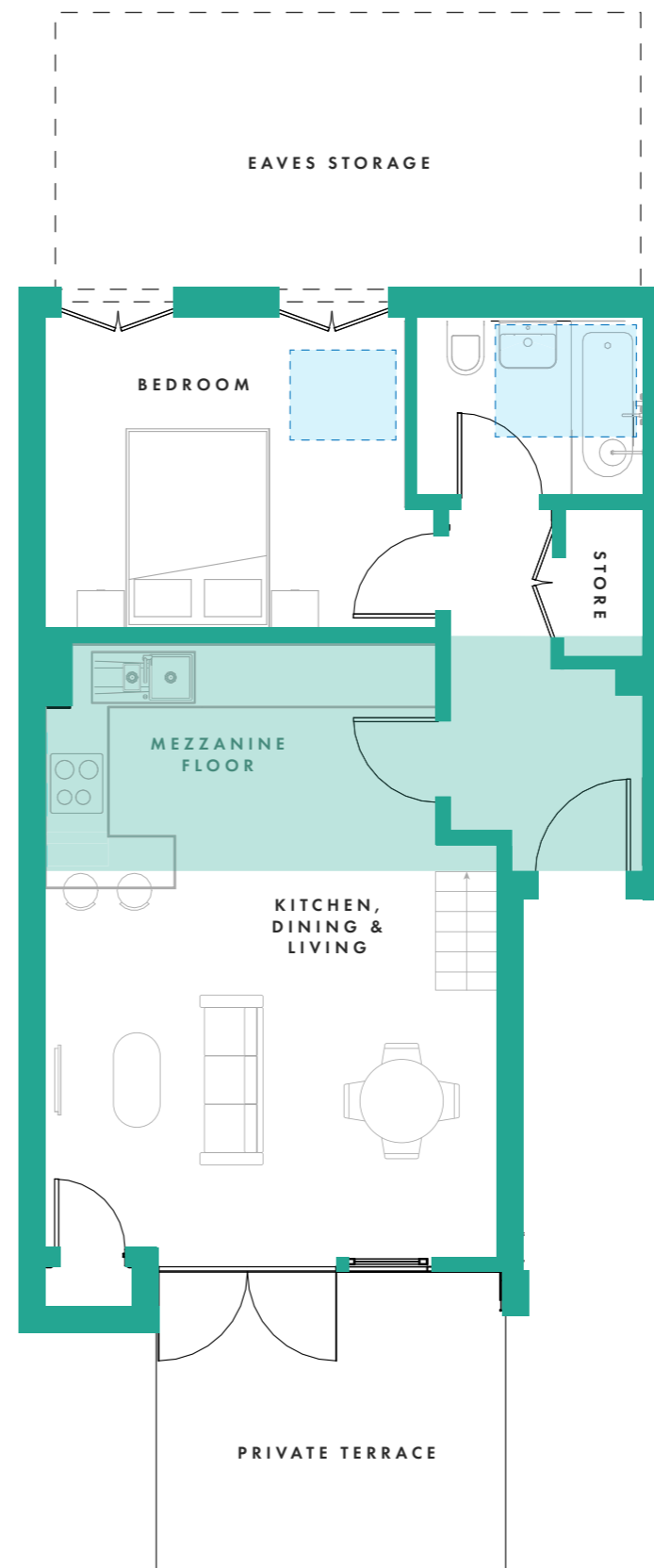
1 bedroom
3.78m x 3.25m (12'5" x 10'8")

2 bathrooms

Open-plan kitchen,
living & dining room
4.41m x 5.98m (14'6" x 19'7")

Mezzanine Floor
2.1m x 5.75m (6'9" x 18'8")
*Mezzanine floor has restricted head height)

Private terrace
3.3m x 2.8m (10'10" x 9'2")





CRAFTED WITH DEVOTION

Our team of dedicated individuals are truly passionate about their work.



XP Property is a young and dynamic property development and investment business who focus on adding value at every step of the development lifecycle. XP specialise in delivering the highest quality residential, commercial, land and mixed-use space whilst creating solid financial returns for our investment partners.

WWW.XPPROPERTY.CO.UK



The talented team of designers and architects at AURA are experts in their field and will help you create that additional space for a growing family, design that stunning open-plan entertaining space you've always dreamed of having or help property developers get the most out of their developments.

WWW.AURAHOMES.CO.UK



Modern living
in the centre
of a historical
town.



SITE MAP DISCLAIMER

Whilst the computer-generated development layout shown has been prepared for the assistance of the prospective purchaser, the information is preliminary and for guidance purposes only. All planting and landscaping shown within computer-generated imagery is indicative only and may vary as construction takes effect. Please speak to the Sales Consultant for further information. Ground levels and other variations are not shown. Suggested north position, hard and soft landscaping and similar details are approximate only and may vary from what is shown – purchasers should satisfy themselves such information is correct and can ask our Sales Consultant to view the detailed architect's site drawings for full and accurate details.

CGI VISUALS DISCLAIMER

The illustrations are computer-generated images and are for guidance purposes only. External materials, finishes, landscaping, the orientation of sanitaryware, wardrobes and kitchen layouts may vary. Whilst all plans and images have been prepared for the assistance of the prospective purchaser, information shown is preliminary and for marketing guidance purposes only. Please note elevations, room sizes and layouts have been taken from architects drawings and may vary as construction takes effect. All dimensions are approximate only, are accurate to +/- 150mm and should not be used for carpet sizes, appliance spaces or items of furniture. Please speak with our Sales Team for more detail.

GENERAL DISCLAIMER

Every care has been taken in the preparation of this brochure. The details contained therein are for guidance only and should not be relied upon as exactly describing any of the particular material illustrated or written by any order under the Consumer Protection from Unfair Trading Regulations 2008. This information does not constitute a contract, part of a contract or warranty. The developers run a programme of continuous product development. Features, internal and external, may vary from time to time and may differ from those shown in the brochure.

No description or information given about the homes or their value, whether written or verbal or whether or not in these particulars may be relied upon as a statement of representation or fact. The selling agents do not have any authority to make any statement or representation of fact and any information given is entirely without the responsibility of the agents or the vendor company. All photographs, plans and computer generated images within this brochure are indicative and for illustration purposes only, they therefore may not represent the actual development or area – they are not intended to be taken as an exact representation. Any areas, measurements or distances are approximate only. Any buyer must satisfy him/herself by inspection or otherwise as to the correctness of any information.



Wellington Street
Thame
OX9 3WT

Contact Us

www.standrewscourt-xp.co.uk

homes@xpproperty.co.uk

0800 009 6368