



29 Wainfelin Road, Pontypool, NP4 6DE

Asking price £160,000



Welcome to this terraced house located on Wainfelin Road. This property boasts a cosy reception room, perfect for relaxing with family and friends. With three inviting bedrooms, there is ample space for a growing family or guests.

Whether you're a first-time buyer or looking to settle down in a welcoming community, this terraced house offers a wonderful opportunity to create a warm and inviting home.

Don't miss out on the chance to make this lovely property your own and enjoy the comforts of a delightful home in the heart of Pontypool.



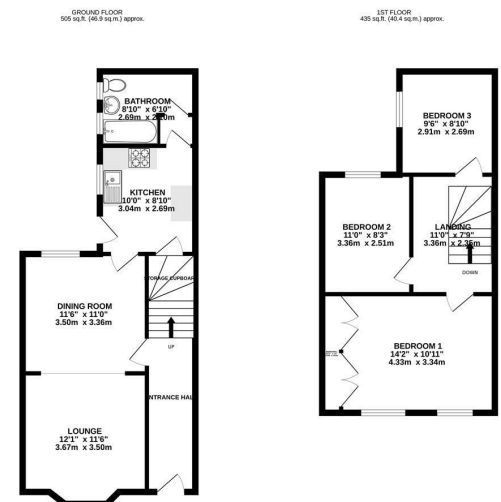
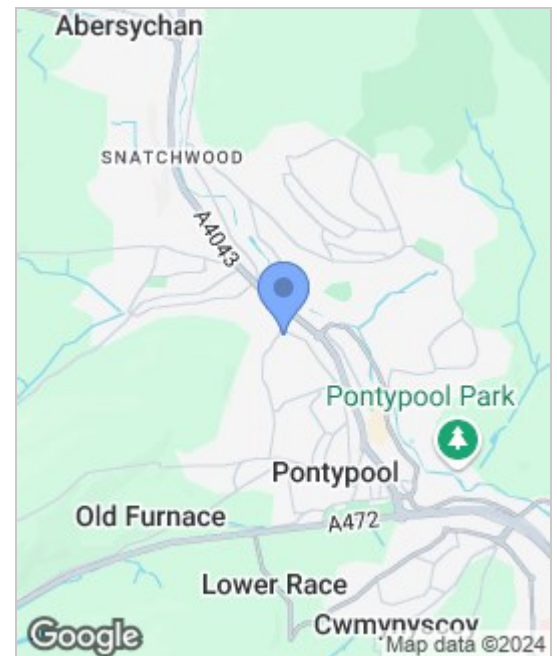
MAIN DESCRIPTION

One2One Estate Agents are pleased to offer for sale this terraced property situated in the popular area of Pontypool, with easy access to the town centre and local primary schools, plus having transport links, making it ideal for commuting. The property briefly comprises entrance hall with door to front and stairs to first floor, the spacious lounge offers a bay window to the front, fire surround, radiator and opening to dining room with window to rear and door to a fitted kitchen with a range of base and wall units, work surface over, gas hob and electric oven plumbing for washing machine, space for fridge/freezer, pantry, window and door to side. Lastly to the ground floor is the bathroom comprising panelled bath with shower over, low level wc, pedestal wash hand basin and windows to rear. To the first floor are three good sized bedrooms. To the rear is a paved area with steps to lawn, gate giving access to rear. Garage with up and over door and door to rear garden. NO CHAIN.

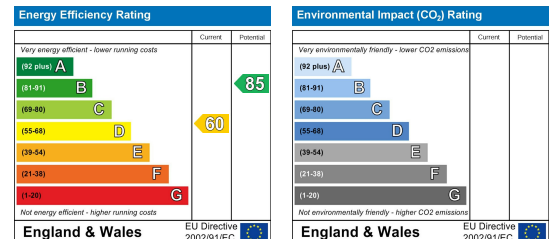
TENURE: FREEHOLD

COUNCIL TAX BAND: B

NB: One2One Estate Agents have been advised by the seller the details pertaining to this property. It is the buyer's responsibility to determine council tax band and tenure. We would encourage any interested parties to seek legal representation and obtain professional advice prior to purchase.



TOTAL FLOOR AREA: 940 sq ft (87.3 sq m) approx.
While every attempt has been made to ensure the accuracy of the figures contained here, measurements should be taken on site and are not intended to be used as a basis for any legal proceedings or other purposes. The figures are given as a guide only and are not intended to be used as a basis for any legal proceedings or other purposes. The figures are given as a guide only and are not intended to be used as a basis for any legal proceedings or other purposes.



These particulars, whilst believed to be accurate are set out as a general outline only for guidance and do not constitute any part of an offer or contract. Intending purchasers should not rely on them as statements of representation of fact, but must satisfy themselves by inspection or otherwise as to their accuracy. No person in this firm's employment has the authority to make or give any representation or warranty in respect of the property.