



82 Devonshire Drive | North Anston | Sheffield | S25 4AP

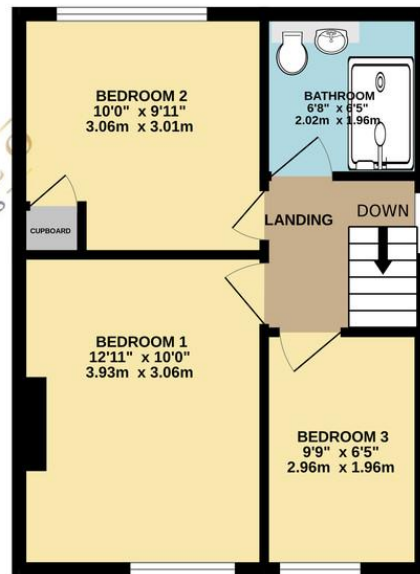
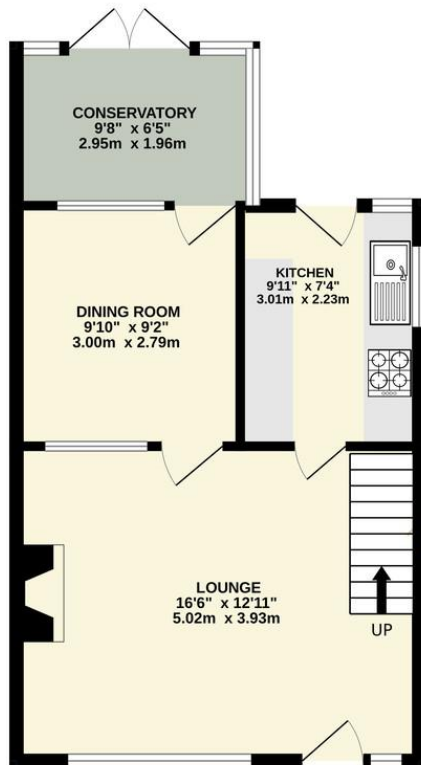
£180,000

Bell & Co Estates are delighted to present this deceptively spacious three bedroom home in North Anston offered with no chan. Upon entering the property, you are welcomed into a generously sized front-facing lounge. This inviting space can comfortably accommodate a range of living furniture and benefits from excellent natural light, creating a warm and welcoming atmosphere ideal for both relaxing and entertaining. To the rear of the property is a separate dining room, providing ample space for a family dining table and chairs. The conservatory is a fantastic additional living area, enjoying views over the rear garden and offering flexibility for use as a sitting area, playroom, or home office, while flooding the ground floor with natural light. The fitted kitchen is thoughtfully laid out with work surfaces to both sides, offering practical preparation space and storage. To the first floor, a central landing gives access to three well-proportioned bedrooms. The first floor is completed by a family bathroom, fitted with a three-piece suite and positioned conveniently off the landing. Externally, the property offers further scope to enhance and personalise, making it an excellent option for buyers looking to add value along side a garage with electricity. The home is located within a popular residential area of North Anston, well placed for local amenities, schools, and transport links, making it well suited to a variety of purchasers. Call Bell & Co Estates now to secure your viewing.



GROUND FLOOR
430 sq.ft. (40.0 sq.m.) approx.

1ST FLOOR
372 sq.ft. (34.5 sq.m.) approx.



Contact Details

79 Wales Road
Kiveton Park
Sheffield
South Yorkshire
S26 6RA

www.bellcoestates.com
info@bellcoestates.com
03333 580590

Agents Note: Whilst every care has been taken to prepare these sales particulars, they are for guidance purposes only. All measurements are approximate are for general guidance purposes only and whilst every care has been taken to ensure their accuracy, they should not be relied upon and potential buyers are advised to recheck the measurements