



## 18 Blackstone Drive | Shireoaks | Worksop | S81 8FE

Guide Price £450,000 to £475,000

Bell & Co Estates are delighted to bring to market this spacious and beautifully presented four-bedroom detached home, offering over 1,900 sq ft of versatile living space in a highly sought-after location. Welcoming entrance hallway with staircase access, elegant front-facing lounge with bay window – ideal for relaxing or entertaining. Expansive open-plan kitchen/diner featuring a full range of fitted units, ample worktop space, integrated appliances, and direct access to the rear garden via patio doors. Adjoining family room/snug – the perfect space for children, a reading nook or home office. Utility room with additional sink and laundry facilities, plus a convenient downstairs WC with wash basin. Internal access to the integral double garage – ideal for vehicles, storage, or future conversion. To the first floor is a luxurious main bedroom suite with its own private en-suite and walk-through dressing area. Three further generously sized bedrooms, each with space for double beds and additional storage. Modern family bathroom featuring bath, WC, and basin – thoughtfully positioned to serve the additional bedrooms. To the front of the property is a private driveway and double garage provide extensive off-road parking. Generous rear garden ideal for family gatherings, children's play, or summer entertaining, bright, neutral décor throughout – move-in ready! Situated in a desirable and peaceful residential area of Shireoaks.

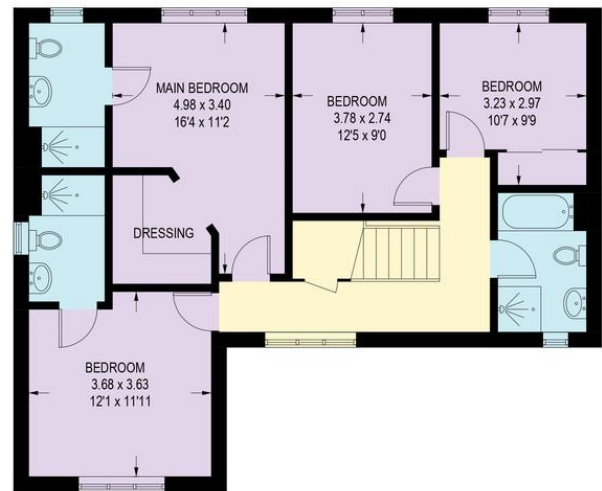


## 18 BLACKSTONE DRIVE

APPROXIMATE GROSS INTERNAL AREA = 149.5 SQ M / 1609 SQ FT  
 GARAGE = 28.1 SQ M / 302 SQ FT  
 TOTAL = 177.6 SQ M / 1911 SQ FT



**GROUND FLOOR**  
 72.1 SQ M / 776 SQ FT



**FIRST FLOOR**  
 77.4 SQ M / 833 SQ FT

Illustration is for identification purposes only,  
 measurements are approximate, not to scale.

(ENR/PRO/2025)

## Contact Details

79 Wales Road  
 Kiveton Park  
 Sheffield  
 South Yorkshire  
 S26 6RA

www.bellcoestates.com  
 info@bellcoestates.com  
 03333 580590

18, Blackstone Drive  
 Shireoaks  
 WORKSOP  
 S81 8FE

Energy rating

**B**

Valid until  
**28 March 2029**

Certificate number  
**2918-6096-7317-6831-6960**

**Property type** Detached house

**Total floor area** 143 square metres

Agents Note: Whilst every care has been taken to prepare these sales particulars, they are for guidance purposes only. All measurements are approximate are for general guidance purposes only and whilst every care has been taken to ensure their accuracy, they should not be relied upon and potential buyers are advised to recheck the measurements