



25 Wales Road | Kiveton | Sheffield | S26 6RA

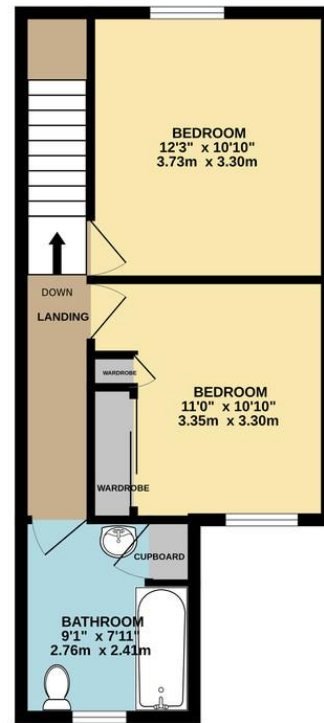
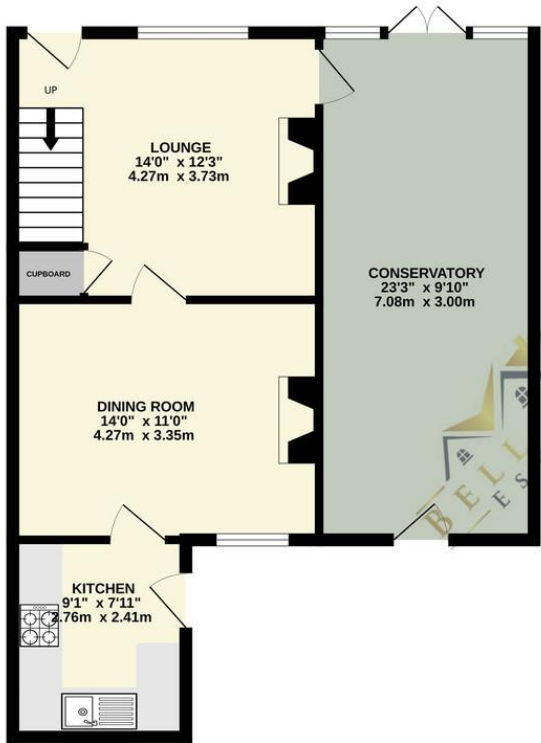
Guide Price £130,000 to £140,000

Bell & Co Estates are delighted to present this charming two bedroom end terrace home in Kiveton Park offered with no chain. Welcome to this delightful two-bedroom mid-terrace home, well-presented living space spread over two floors. Situated in a sought-after residential area, this property is perfect for first-time buyers, small families, or those looking to downsize without compromising on space. As you enter the property, you're greeted by a spacious lounge, perfect for relaxing or entertaining guests. Adjacent to the lounge is a separate dining room, ideal for family meals and gatherings. The well-appointed kitchen is located at the rear of the property and offers plenty of counter and storage space with appliances. To the side, the property boasts an impressive conservatory that spans the width of the house – a versatile space that can serve as an additional living area, playroom, or home office, with doors opening out to the garden. Upstairs, you'll find two generously sized double bedrooms. The master bedroom and the second bedroom both include ample space for storage, with built-in wardrobes in the second bedroom. A modern bathroom completes the first floor, featuring a bath with overhead shower, WC, and wash basin. This home combines character and comfort in a convenient location, close to local amenities, schools, and transport links. Early viewing is highly recommended to appreciate the space and potential on offer. Call now to arrange your viewing.



GROUND FLOOR
612 sq.ft. (56.9 sq.m.) approx.

1ST FLOOR
397 sq.ft. (36.9 sq.m.) approx.



Contact Details

79 Wales Road
Kiveton Park
Sheffield
South Yorkshire
S26 6RA

www.bellcoestates.com
info@bellcoestates.com
03333 580590

25 Wales Road
Kiveton Park
SHEFFIELD
S26 6RA

Energy rating

D

Valid until
21 March 2033

Certificate number
2923-1008-6257-4377-9200

Property type end-terrace house

Total floor area 74 square metres

Agents Note: Whilst every care has been taken to prepare these sales particulars, they are for guidance purposes only. All measurements are approximate are for general guidance purposes only and whilst every care has been taken to ensure their accuracy, they should not be relied upon and potential buyers are advised to recheck the measurements