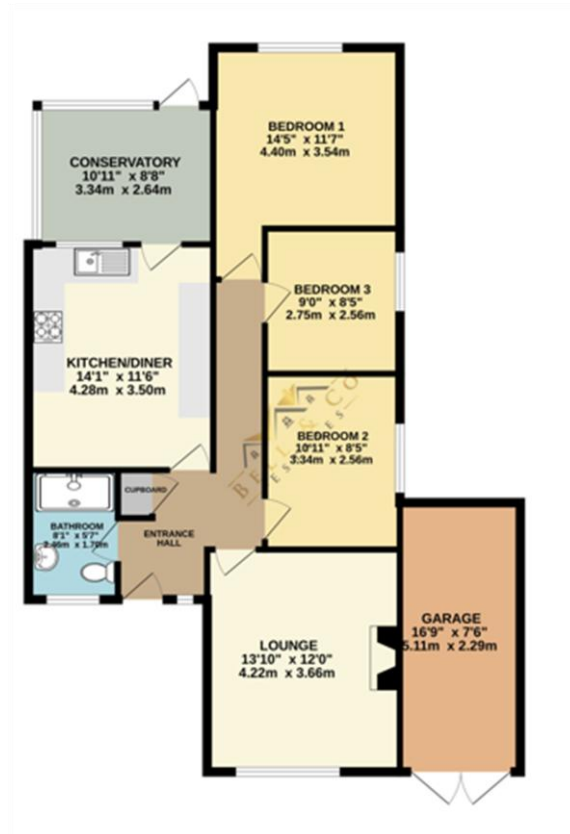
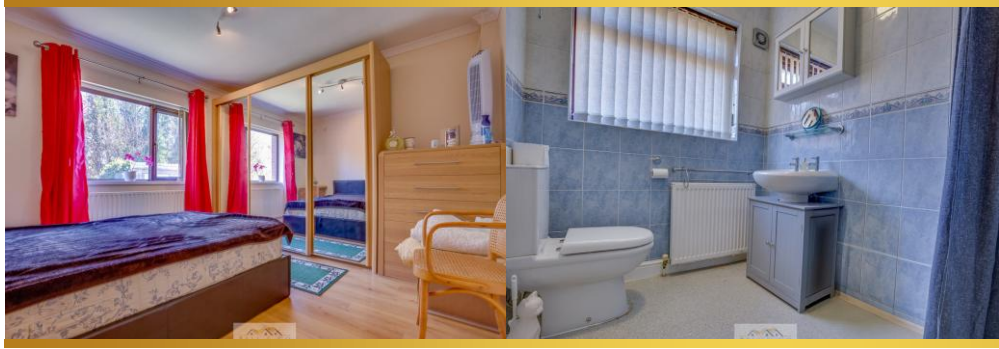




3 Cherry Tree Road | Wales | Sheffield | S26 5LL

£240,000

Bell & Co Estates are delighted to present this spacious three-bedroom semi-detached bungalow, ideally located in the highly sought-after village of Wales, offered to the market with no vendor chain. This well-proportioned home offers comfortable single-level living and generous room sizes throughout. Perfect for those looking to downsize without compromising on space or for anyone seeking a home with potential to make their own. In brief, the accommodation comprises a spacious entrance hallway providing access to all rooms, a well-equipped kitchen diner with ample cupboard and worktop space. A bright rear-facing conservatory, ideal for enjoying views of the garden, a generous front-facing lounge, three spacious bedrooms offering versatile living options and a fully fitted wet room for added convenience. Outside, the gated driveway provides off-road parking and leads to a detached garage. The front garden features a lawned area with pathway leading to the main entrance. To the rear, you'll find a private enclosed garden, mainly laid to lawn – the perfect space for relaxing or enjoying the outdoors. Situated in the popular village of Wales, this home enjoys a peaceful setting while remaining close to local amenities, transport links, and countryside walks. A perfect balance of convenience and village charm. Whether you're looking for a peaceful retirement home, a spacious bungalow with potential, or a blank canvas to add your personal touch, this fantastic property is not to be missed. Contact Bell & Co Estates today to arrange your viewing!



Contact Details

79 Wales Road
Kiveton Park
Sheffield
South Yorkshire
S26 6RA

www.bellcoestates.com
info@bellcoestates.com
03333 580590

Agents Note: Whilst every care has been taken to prepare these sales particulars, they are for guidance purposes only. All measurements are approximate are for general guidance purposes only and whilst every care has been taken to ensure their accuracy, they should not be relied upon and potential buyers are advised to recheck the measurements