



4 Burnt Leys Cottages | Steetley | Workshop | S80 3ED

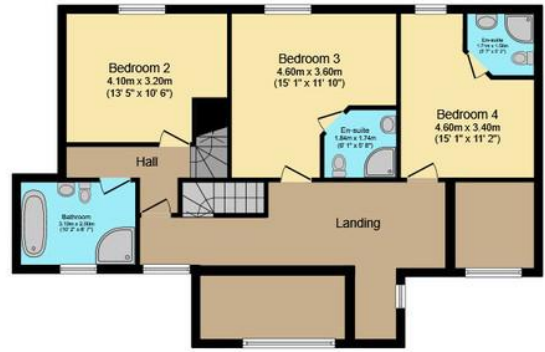
Guide Price £600,000 to £650,000

Bell & Co Estates are honoured to present this beautiful five-bedroom link-detached home in Steetley, offering extensive living space spread across three floors. With both original character and modern extensions, this property is ready to move in to! Entering through a spacious hallway, you're immediately greeted by a cozy snug area, featuring a log burner and a large floor-to-ceiling window that fills the space with natural light. The heart of the home is the newly modern fitted kitchen, complete with an island and breakfast bar. The kitchen offers ample worktop and cupboard space, a freestanding Rangemaster cooker, and integrated appliances. Adjacent is the dining area, boasting charming wooden beams and an open fire for show. The utility room is perfectly designed with plumbing for laundry and extra storage, offering convenient access to the garden. The formal lounge provides a serene retreat with an electric fire and warm wall lighting, while a separate office space offers a quiet place to work, complemented by a downstairs WC. The first floor is home to three generous double bedrooms, with fitted wardrobes and renovated ensuite bathrooms. The modern family bathroom is complete with a freestanding bath, separate shower cubicle, wash basin, and WC. The landing area offers a versatile space that could be used as an office or a snug. The second floor is dedicated to the expansive master bedroom, which comes with a recently renovated ensuite. The ensuite includes a freestanding bath, walk-in shower, wash basin, WC, and additional storage. A second double bedroom is currently used as a dressing room. The front of the property features a large pebbled driveway, secured by new gates. There's also a grassed area and a path leading to the front door. The side gate gives access to the spacious rear garden, which includes a patio area, a boiler house, a wood store, and two storage sheds. Viewing is essential.



Ground Floor

Floor area 88.3 m² (951 sq.ft.)



First Floor

Floor area 88.3 m² (951 sq.ft.)



Second Floor

Floor area 49.8 m² (536 sq.ft.)

Contact Details

79 Wales Road
Kiveton Park
Sheffield
South Yorkshire
S26 6RA

www.bellcoestates.com
info@bellcoestates.com
03333 580590

4 Burnt Leys Cottages
Steetley
WORKSOP
S80 3ED

Energy rating

C

Valid until
27 October 2034

Certificate number
2154-0181-1151-3124-8161

Property type Semi-detached house

Total floor area 291 square metres

Agents Note: Whilst every care has been taken to prepare these sales particulars, they are for guidance purposes only. All measurements are approximate are for general guidance purposes only and whilst every care has been taken to ensure their accuracy, they should not be relied upon and potential buyers are advised to recheck the measurements