

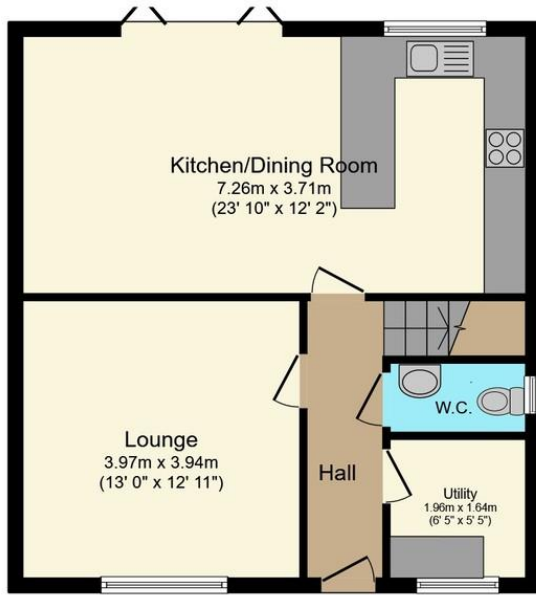


33 Lodge Lane | Aston | Sheffield | S26 2BL

£290,000

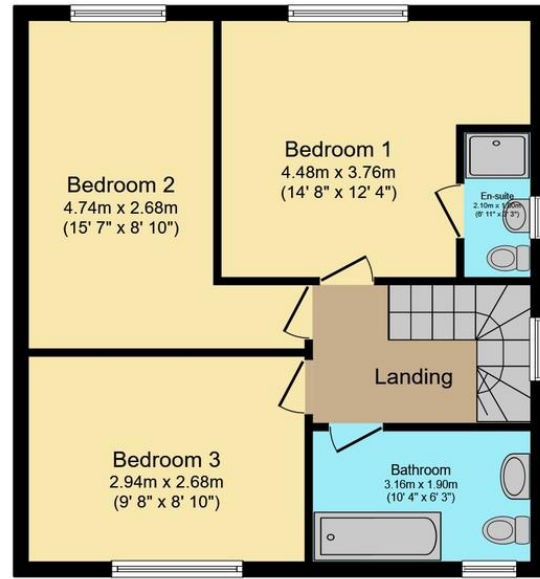
Bell & Co Estates are delighted to present this STUNNING, NEW HOME in the heart of Aston selling with no onward chain! In brief the property comprises of spacious Entrance Hallway with convenient Downstairs WC and Wash Basin, separate Utility Room / Cloak Room, front facing Spacious Lounge, LARGE REAR OPEN PLAN KITCHEN WITH DINING AREA including plenty of cupboard and worktop space, breakfast bar with integrated appliances! Upstairs are THREE LARGE BEDROOMS, Master complete with EN-SUITE Shower Room, wash basin and WC and two further double bedrooms and modern Family Bathroom complete with separate Bath, Shower Cubicle, Wash Basin and WC. To the rear of the property is a spacious PATIO and grassed area, rear side access to the front of the property which houses a driveway providing off road parking and grassed area. Close to all local amenities, bi-transport links and schools this property is in a prime location! Call now to avoid disappointment.

- NEW BUILD!
- LARGE THREE BEDROOM SEMI DETACHED HOME
- Spacious Throughout
- Large Kitchen with Integrated Appliances
- Front Facing Lounge
- Dining Area with Bi-Folding Doors



Ground Floor

Floor area 56.7 m² (610 sq.ft.)



First Floor

Floor area 56.7 m² (610 sq.ft.)

TOTAL: 113.4 m² (1,221 sq.ft.)

This floor plan is for illustrative purposes only. It is not drawn to scale. Any measurements, floor areas (including any total floor area), openings and orientations are approximate. No details are guaranteed, they cannot be relied upon for any purpose and do not form any part of any agreement. No liability is taken for any error, omission or misstatement. A party must rely upon its own inspection(s). Powered by www.Propertybox.io

Contact Details

79 Wales Road
Kiveton Park
Sheffield
South Yorkshire
S26 6RA

www.bellcoestates.com
info@bellcoestates.com
03333 580590

Agents Note: Whilst every care has been taken to prepare these sales particulars, they are for guidance purposes only. All measurements are approximate and are for general guidance purposes only and whilst every care has been taken to ensure their accuracy, they should not be relied upon and potential buyers are advised to recheck the measurements