



## 12 Belfry Way | Dinnington | Sheffield | S25 2SD

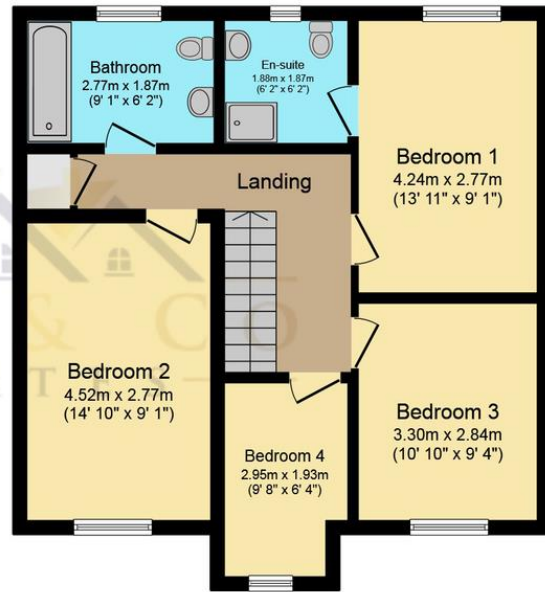
£280,000 to £300,000

Bell & Co Estates are delighted to present this lovely, FOUR BEDROOM DETACHED home in the heart of Dinnington. In brief the property comprises of spacious Entrance Hallway, LARGE front facing Lounge with bay window, and a lovely electric fire and surround. Double doors open into the MODERN FITTED KITCHEN with Dining Area and patio doors open onto the rear garden. Downstairs WC with cloak cupboard and separate Utility Room with back door providing access to the rear garden. Upstairs are THREE LARGE BEDROOMS, Master Complete with stunning En-Suite with walk in shower, sink unit and WC. Further good-sized single Bedroom and Family Bathroom complete with shower over bath, wash basin and WC. To the front of the property is a driveway providing amply parking and access to the Garage, to the side of the property is a gate which provides access to the rear garden. The garden is mainly laid to lawn with a spacious patio area and greenhouse. Close to local amenities, schools and transport links this property is in a prime location. Viewing is highly recommended to see the true beauty this lovely home has to offer.

- Four Bedroom Detached Family Home
- Spacious Throughout
- Living Room
- Kitchen with Dining Area
- Master Bedroom with En Suite
- Family Bathroom
- Off Road Parking
- Garage



**Ground Floor**



**First Floor**

Total floor area 121.3 m<sup>2</sup> (1,306 sq.ft.) approx

This plan is for illustration purposes only and may not be representative of the property. Plan not to scale. Powered by PropertyBox

## Contact Details

79 Wales Road  
Kiveton Park  
Sheffield  
South Yorkshire  
S26 6RA

[www.bellcoestates.com](http://www.bellcoestates.com)

03333 580590

12 Belfry Way  
Dinnington  
SHEFFIELD  
S25 2SD

Energy rating

**D**

Valid until  
**12 December 2033**

Certificate number  
**2175-9321-8147-1114-2147**

**Property type** Detached house

**Total floor area** 103 square metres

Agents Note: Whilst every care has been taken to prepare these sales particulars, they are for guidance purposes only. All measurements are approximate and for general guidance purposes only and whilst every care has been taken to ensure their accuracy, they should not be relied upon and potential buyers are advised to recheck the measurements